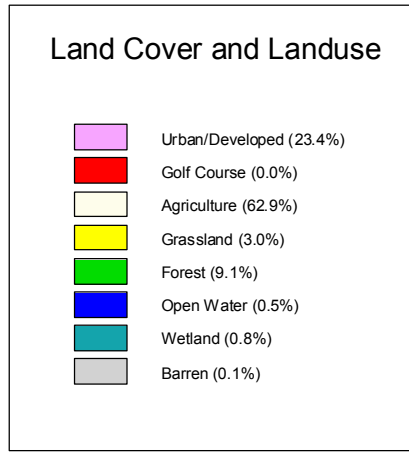


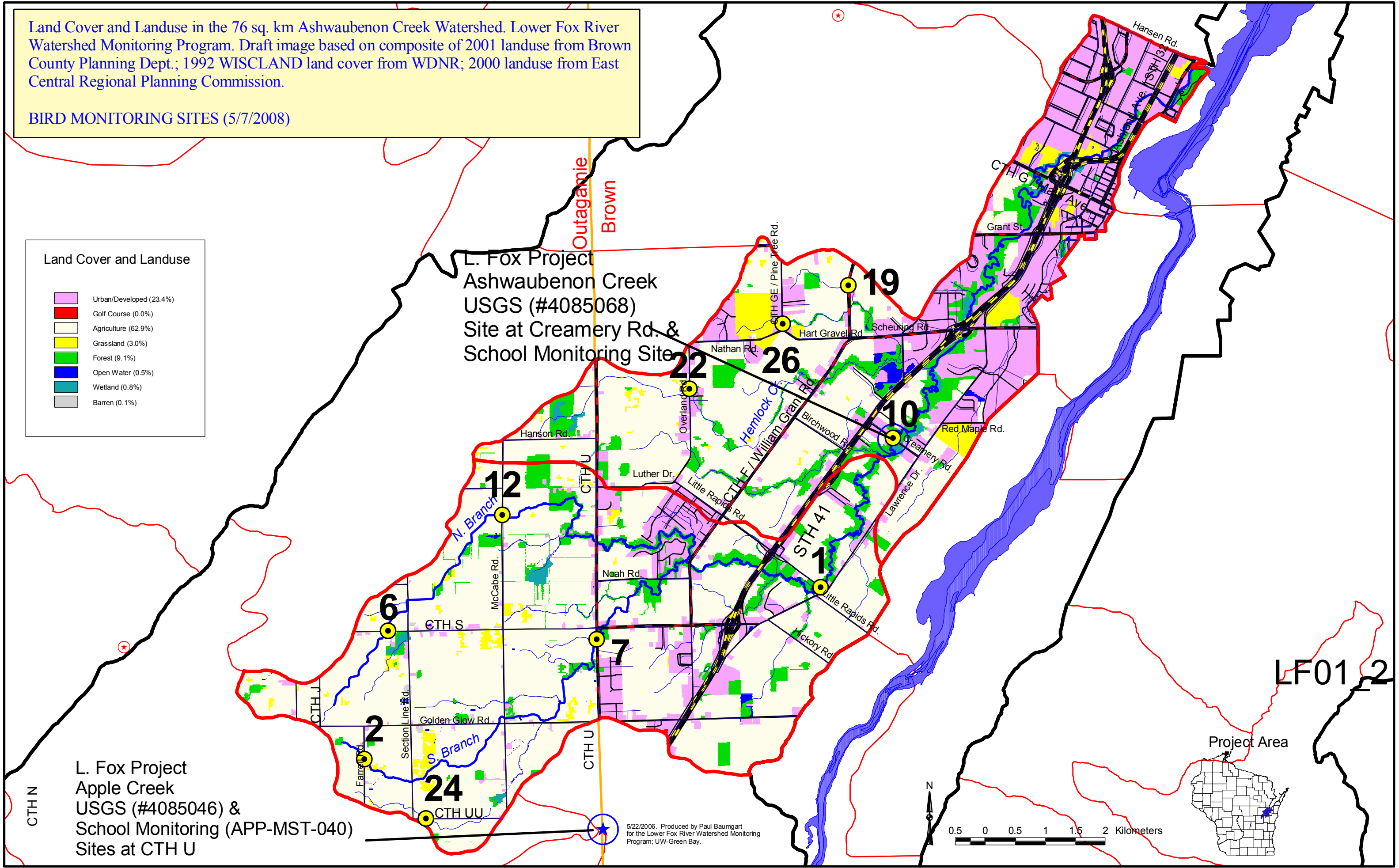
Land Cover and Landuse in the 76 sq. km Ashwaubenon Creek Watershed. Lower Fox River Watershed Monitoring Program. Draft image based on composite of 2001 landuse from Brown County Planning Dept.; 1992 WISCLAND land cover from WDNR; 2000 landuse from East Central Regional Planning Commission.

BIRD MONITORING SITES (5/7/2008)

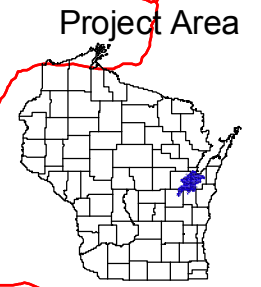


L. Fox Project
Ashwaubenon Creek
USGS (#4085068)
Site at Creamery Rd. &
School Monitoring Site

L. Fox Project
Apple Creek
USGS (#4085046) &
School Monitoring (APP-MST-040)
Sites at CTH U



LF01_2



5/22/2006. Produced by Paul Baumgart for the Lower Fox River Watershed Monitoring Program; UW-Green Bay.