

INTERMEDIATE FRENCH II

FRENCH 202

printemps 2010

mardi & jeudi 12h30-13h50

TH 310

Prof. E. N. Meyer
Office: SA 265
Tél: 465-2098
courrier électronique:
meyern@uwgb.edu

heures de bureau:
mardi & jeudi: 8h15-9h15
et par rendez-vous!



Required Texts: *À votre tour!* Txt/wkbk/lab manual, Jean-Paul Valette et Rebecca Valette

Course Description and Objectives:

This class is taught on the assumption that you have three years of high school French or three semesters of college French and that you want to learn how to speak, read and write the language. Emphasis will be on achieving proficiency (speaking, understanding and writing) in French in ordinary situations. You will acquire a familiarity with the cultures of French-speaking areas as well. In order to learn a language, active and daily effort is essential in class, at home and in the Language Resource Center.

The textbook allows students from different academic background the opportunity to jump right in and start working in French, even after being away from the language for a while. While the text features an in-depth review of the basic patterns and structures of French, the text serves to reactivate this base in order to learn to better communicate in an active fashion.

Class will normally be in French. While some of you are already used to this consistent use of French in class, others are not and may feel somewhat intimidated. Please realize that it is not necessary to understand everything to get along in the class or even in a French-speaking area. Hearing and speaking as much French as possible will help you to reach proficiency, however, and should prove to be fun! Be sure to ask me to repeat (*"répétez s'il vous plaît, Mademoiselle Meyer"*) as often as you need. And, if you feel you need additional help, please see me outside of class. I would be delighted to help you. I am in my office during office hours and will also be there at other times --please drop by! I will be glad to make appointments with you as well. You can reach me any time by *e-mail*.

We will be learning some other ways to use the internet to improve our French during the semester. Try our homepage www.uwgb.edu/french Our homepage features lots of other suggestions for fun sites and our lab has lots of fun games and software..

Testing: At the end of each lesson you will have both a written and an oral test. These tests will be given in class. The oral test uses a collaborative award-winning approach, and I look forward to explaining it to you. There will be a final exam as well as a final group skit.

REQUIRED WORK

Attendance Regular attendance in class is required. Roll will be taken on a daily basis. After three absences your oral participation grade will be affected. Oral participation is very important in a language course, so attendance is especially important. Note that attendance affects both your oral participation grade and the results of your quizzes or dictées. A missed quiz or dictée earns a 0.

Oral Preparation Daily preparation of assigned homework either at home or in the language resource center. Following every class, get in the habit of both reviewing what we have just done and looking ahead to the next time we meet. If you do your oral work in the language resource center, please try to record and then play back your responses. Listening to yourself will help you to improve your spoken French. Because of the heavy emphasis on the development of oral and listening comprehension skills in this course, it will not be sufficient to study the assignments silently.

Beginning with the first lesson (*unité 3*), part of this time will be spent doing the listening and speaking exercises which you will find in the *Workbook/Lab Manual* (in the second section called "Listening and Speaking"). This is an excellent way to build up your ability to understand natural, spoken French. At first, it may sound fast, but you may play segments as often as you want. (Make good use of the repeat button which almost instantly repeats the last sentence). Some exercises will ask for oral responses, a great way to build your spoken skills and your confidence. Be sure to do these exercises in a clear voice (nobody is listening to you if they are doing their own work--and if they are, they are probably Spanish students admiring your beautiful French pronunciation).

There are other learning opportunities in the resource center as well. There are video tapes and satellite tv and radio which offer a variety of programming in French without any subtitles, a fine way to "train your ear." There are interactive computers connected to CD ROM players and there is a videodisc player that has some useful French programs that are enjoyable ways to learn. The computers (which are networked) have games in French, and some writing software to help you with your French writing.

One-hour minimum per week lab attendance is required. If you attend less frequently, your grade will be affected adversely. If you attend more frequently, your grade will be affected in a positive manner. Be sure to sign in with the lab attendant so that your presence is acknowledged. The language lab is located in Studio Arts 355. Hours are posted on the door. There is no lab requirement the first two weeks of semester (as the lab is often on more limited hours then). Attendance of an hour at French Table with the French native can substitute for this hour requirement, but be sure to sign in!

Written homework: All written homework (exercises and compositions) **MUST** be handed in **ON TIME**. Be prepared to hand in written exercises, although sometimes we will correct them in class, and thus you may not turn them in.

The **Workbook** will be used outside of class for writing practice and as a way to build understanding of basic structures of French. I may call for the Workbook/Laboratory Manual after each lesson, so be sure to keep it up to date. I do this in order to see whether you are having problems, how well you use the self-correct exercises, and to help with the open-ended exercises. There is an "*open book*" symbol in the text to indicate the existence of an exercise in the Workbook reinforcing the particular point you are studying in the text. When you see the "*open book*" symbol, that is the best time to turn to the corresponding exercise in the Workbook.

(A) Study Expectations and Class Participation Expectations

Students are **required** to read the material assigned for each class. Class participation consists of (1) answering questions the instructor asks each day in class on the daily reading material, (2) offering comments, making remarks, (3) participating in class discussions, and (4) asking questions which show an understanding of the material in the daily reading assignments. Quality, insight, depth, and quantity of contributions are graded, but quantity alone will count for nothing. Class participation is an essential part of this course. Attendance itself doesn't count as participation, but missing classes will count against class participation.

(B) Attendance Policy

The **University Attendance Policy** is "Students are expected to attend all class sessions in the courses in which they are enrolled."

(C) Academic Dishonesty Policy

Dishonesty in academic matters undermines student intellectual development and the goal of UWGB to develop the critically thinking, and writing, and problem-solving skills of the student. Further, dishonesty undermines the foundations of the search for the true and the right in philosophical matters. Academic dishonesty, includes, but is not restricted to, copying, sharing answers or questions, collaborating with others on work to be presented in written form except where expressly permitted by the instructor, submitting work or a part of work previously submitted in another course, and plagiarizing others' work in papers. Academic dishonesty will not be tolerated and will result in an F for the course grade.

(D) Policy on Disruptive Behaviors

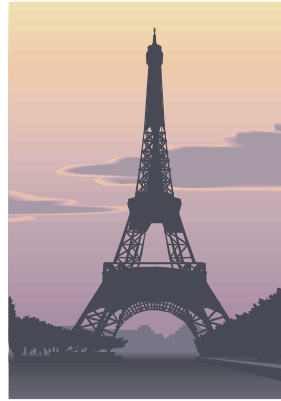
No disruptive behaviors are allowed. To foster intellectual development and civil discourse, no behavior that disrupts the learning atmosphere of classroom will be tolerated. Examples of disruptive behavior include, but are not exhausted by:

Text messaging or taking phone calls in class: Cell phones must be turned off at the beginning of class. This includes vibration and visual settings. No text messaging. If you must text message, do not come to class.

Disrespect shown openly toward the professor or other students: It includes **(1)** talking with others when the instructor is speaking to the class or students are involved in discussion, **(2)** physical behavior or language that creates an uncomfortable situation that could be construed as harassment or discrimination (sex, race, ethnicity, sexual orientation, physical appearance, etc.), **(3)** inappropriate or off-topic monopolization of discussions to the exclusion of other students, **(4)** irrelevant questions and comments, **(5)** reading material (newspapers, etc.) other than assigned course material during class time, **(6)** listening to anything through headphones, headsets, ear buds, etc., during class time, and **(7)** distracting or inappropriate expressions, gestures, or body language that hamper the conduct of the class.

Anyone who disrupts the learning atmosphere in such a manner will first be warned. If the behavior does not stop, the student will be asked to leave and the final grade for the

course will be substantially lowered. If he/she does not comply, campus security will remove the student. Repeat offenders will be referred to the Dean of Students. Continued disruptive behavior may result in removal from the class and a failing grade.



GRADING

Lesson tests: Each lesson will be followed by a test. **If you miss a test, you will receive a 0.** The lowest of your lesson tests will be dropped in averaging your final grade.

Final. Your final exam includes participation in a group skit. The written exam is scheduled on Thursday, May 13 from 10h30-12h30..

Final Grade:

- 30 % Chapter Exams (1 score is dropped).
- 10 % Oral Chapter Quizzes
- 20 % Oral Participation (quality of participation is included in this grade and not simply attendance)
- 20 % Written Work (Exercises, compositions, dictées, and class discussion list on the D2L page)
- 20 % Final Exam

FACILITIES

The Language Resource Center is located in SA 355. In addition to the lab equipment there are networked interactive pc's, video tapes, a satellite dish, a computer program to help in writing French compositions, and a variety of games in addition to laser disk technology.

Library The University Library subscribes to *Paris Match* and *Le Point* in case you would like to flip through and enjoy ads from a different culture. Soon you will be able to read some articles!

OUTILS UTILES

- ❖ Dictionary
A French-English dictionary can help you when you don't know a word (I have recommended a good dictionary, which you can find in the bookstore next to the course books).

- ❖ A Reference Grammar can help you better understand, correct and revise your French. See the book listed as 'recommended' for this course.
- ❖ The Language Resource Center has many tools that may help you in your quest to improve your French expression. We have networked interactive pcs, video tapes, Interactive CD-Roms, a satellite dish, games, laser disks and a variety of other computer programs.
- ❖ French concert event. The *Cercle français* is sponsoring a concert event this term on April 6, 2010. You are **required** to attend this event. The date will be announced as soon as possible.
- ❖ la table française. Attend three times minimum. Additional attendance of the table will count towards extra credit. The sessions will be held in the Common Grounds Coffee House, once we hire a French native speaker. Additional sessions may be added!
- ❖ La liste électronique du cours. You **must** participate in this list in French on a weekly basis (a **minimum** of 12 times). This list is available through the **D2L** page.
- ❖ French web page. Our French web page www.uwgb.edu/french has many resources designed to help you learn more about French culture and language as well as links to other helpful sites.
- ❖ each other. Small-group work as well as peer editing will be used in this course.
- ❖ me. Feel free to ask me questions as well as for materials that will help you. For instance, I have French grammars, French magazines and French children's books as well as many other materials. I can recommend reading material (novels, poems, etc., etc.). In addition, I am an experienced and enthusiastic teacher and learner!



Originality clause:

ALL written work handed into the professor **must** be the student's own original thought and expression.

Accommodations statement:

As required by federal law and UWGB policy for individuals with disabilities, students with a documented disability who need accommodations must contact the Disability Services Office at 465-2841. Reasonable accommodations can be made unless they alter the essential components of the class. Please contact the instructor and Disability Coordinator in a timely manner to formulate alternative arrangements.

Disclaimer:

All dates on the syllabus are subject to change.

Learning Outcomes

All students who graduate from UW-Green Bay should achieve the three skill-based learning outcomes listed here in addition to domain specific learning outcomes. The general education program emphasizes developing these skills:

- The ability to communicate effectively through listening, speaking, reading, writing, and the use of computers.
- The ability to think critically.
- The ability to exercise problem-solving skills, such as problem identification and analysis, solution formulation, implementation and assessment, using an integrated, interdisciplinary approach.

World Culture Learning Outcome: An understanding of contemporary global issues and problems through the study of beliefs, values and ways of life in a country other than the United States.