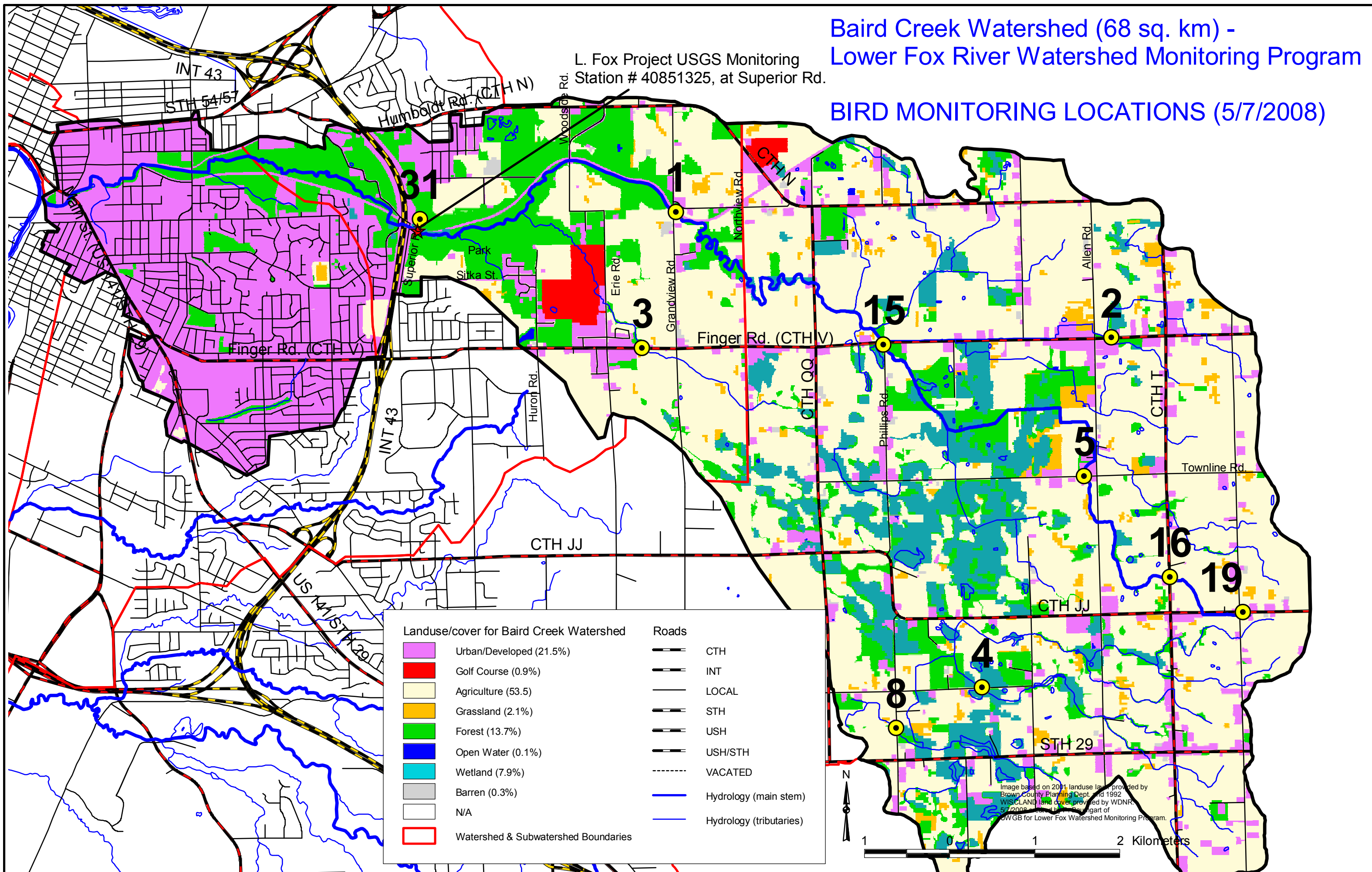


Baird Creek Watershed (68 sq. km) -  
Lower Fox River Watershed Monitoring Program

L. Fox Project USGS Monitoring  
Station # 40851325, at Superior Rd.

BIRD MONITORING LOCATIONS (5/7/2008)



Landuse/cover for Baird Creek Watershed		Roads	
	Urban/Developed (21.5%)		CTH
	Golf Course (0.9%)		INT
	Agriculture (53.5)		LOCAL
	Grassland (2.1%)		STH
	Forest (13.7%)		USH
	Open Water (0.1%)		USH/STH
	Wetland (7.9%)		VACATED
	Barren (0.3%)		Hydrology (main stem)
	N/A		Hydrology (tributaries)
	Watershed & Subwatershed Boundaries		

Image based on 2001 landuse data provided by  
Brown County Planning Dept. and 1992  
WISCLAND land cover provided by WDNR.  
5/7/2008 map by L. Fox Project, part of  
L. Fox Project for Lower Fox Watershed Monitoring Program.

