

Legend

Monitoring Stations

County Boundary

- County Boundary
- Major Watershed Boundary
- Sub-watershed boundaries

Landuse in 2004

- Urban - Medium Density
- Urban - High Density
- Urban - Low Density
- Golf
- Rural Residential
- Farm Buildings
- Rural Roads
- Agriculture
- Grassland
- Forest
- Open Water
- Wetland
- Quarry

LFRWMP
Ashwaubenon Creek
USGS Monitoring
site at Creamery Rd.
(# 4085068)

LFRWMP
Apple Creek
USGS Monitoring
site at CTH U
(# 4085046)

LFRWMP
Upgrade to Duck Creek
USGS/Oneida Nation Monitoring site
at CTH FF (# 4072150)

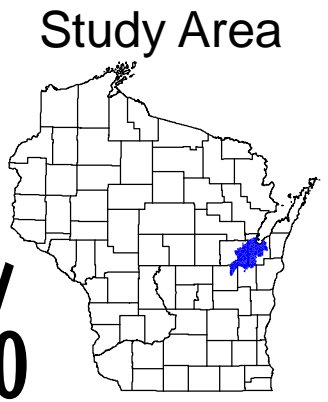
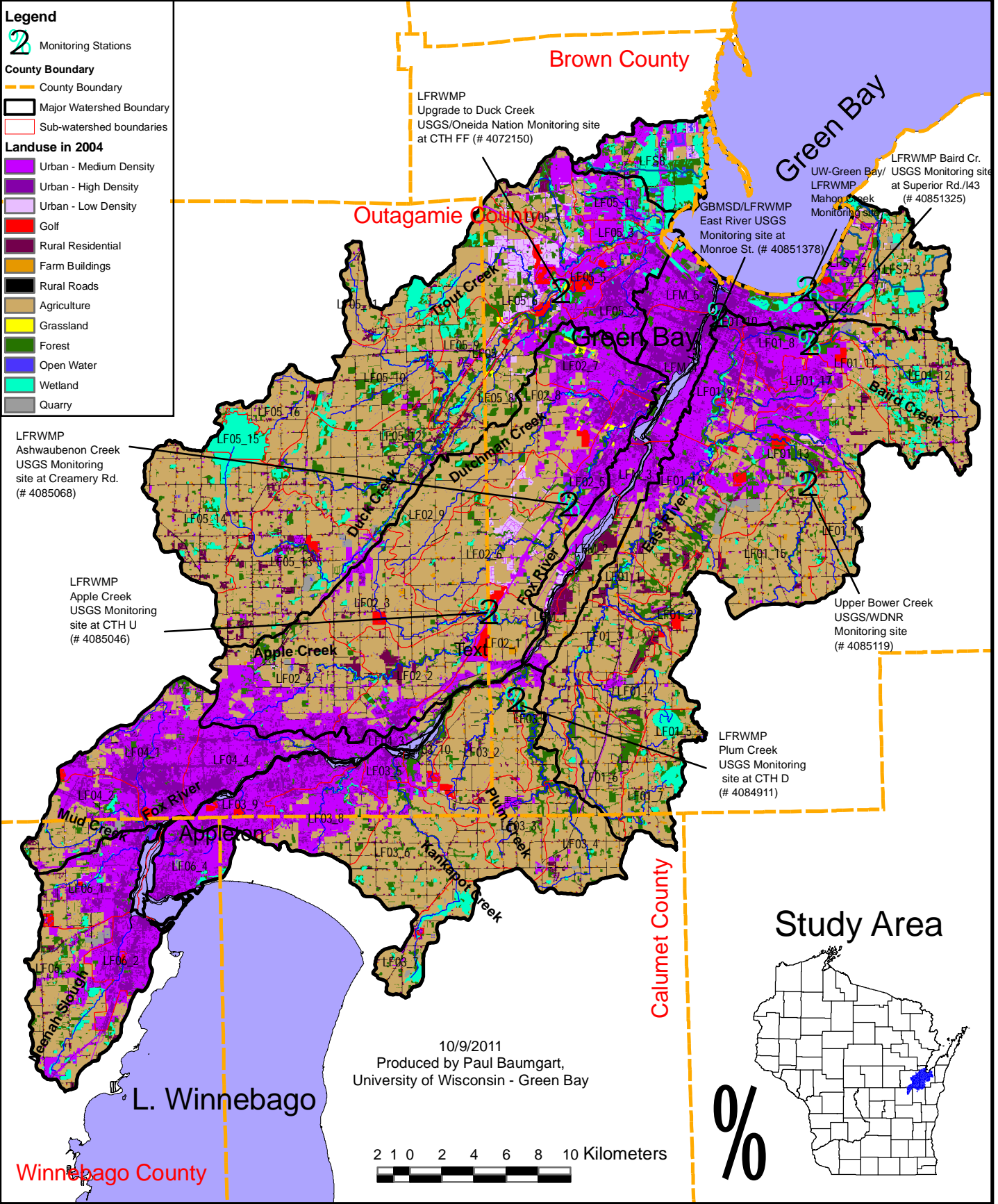
LFRWMP Baird Cr.
USGS Monitoring site
at Superior Rd./I43
(# 40851325)

UW-Green Bay/
LFRWMP
Mahon Creek
Monitoring site

GBMSD/LFRWMP
East River USGS
Monitoring site at
Monroe St. (# 40851378)

Upper Bower Creek
USGS/WDNR
Monitoring site
(# 4085119)

LFRWMP
Plum Creek
USGS Monitoring
site at CTH D
(# 4084911)



10/9/2011
Produced by Paul Baumgart,
University of Wisconsin - Green Bay



Winnebago County