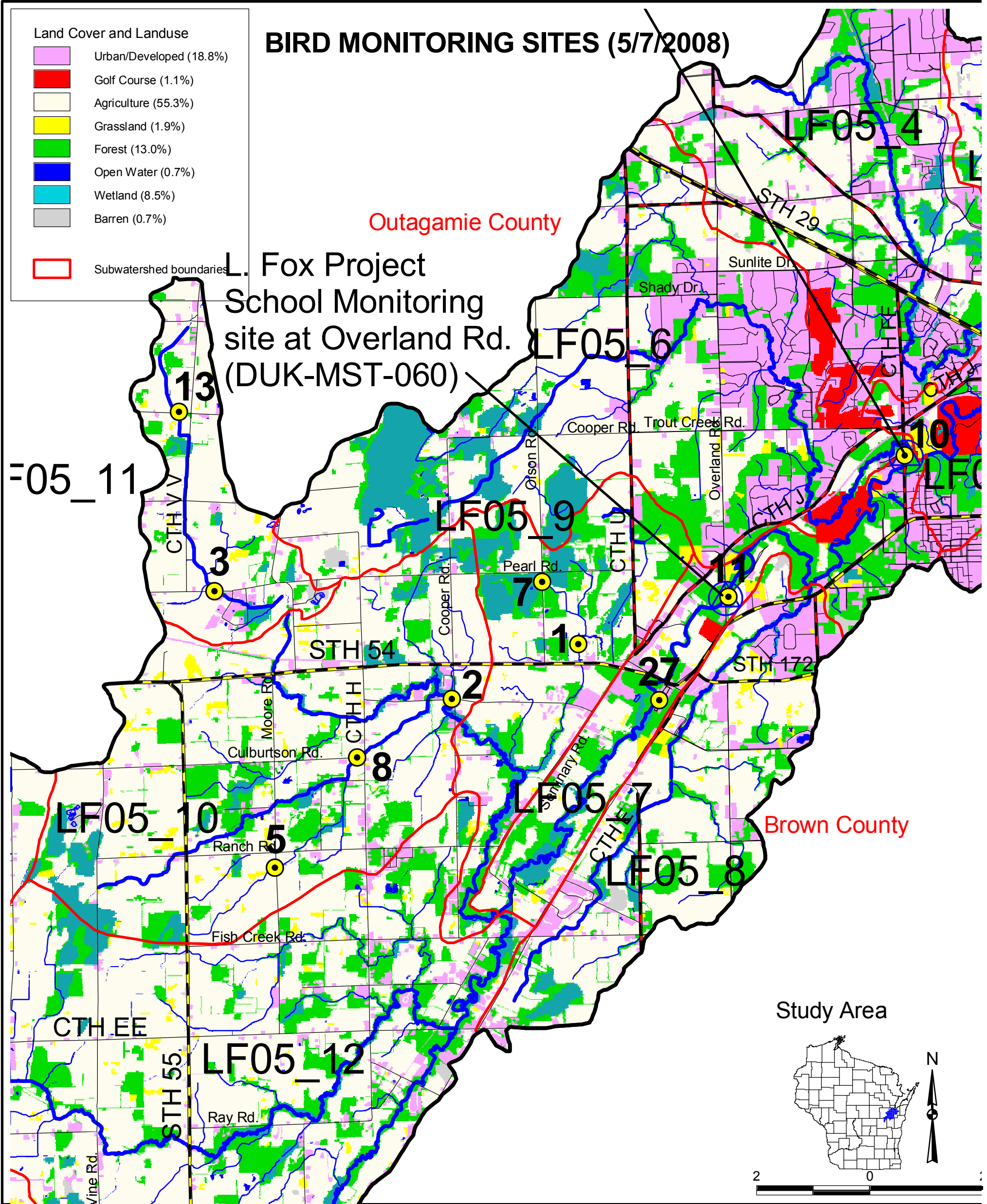


BIRD MONITORING SITES (5/7/2008)

Land Cover and Landuse

	Urban/Developed (18.8%)
	Golf Course (1.1%)
	Agriculture (55.3%)
	Grassland (1.9%)
	Forest (13.0%)
	Open Water (0.7%)
	Wetland (8.5%)
	Barren (0.7%)

Subwatershed boundaries



Landuse and land cover in the 392 sq. km Duck Creek Watershed. DRAFT image based on composite of: 2001 landuse from Brown County Planning Dept.; 2000 landuse from East Central Regional Planning Commission, and 1992 WISCLAND land cover from WDNR. BIRD MONITORING SITES (5/7/2008).