

CELEBRATE



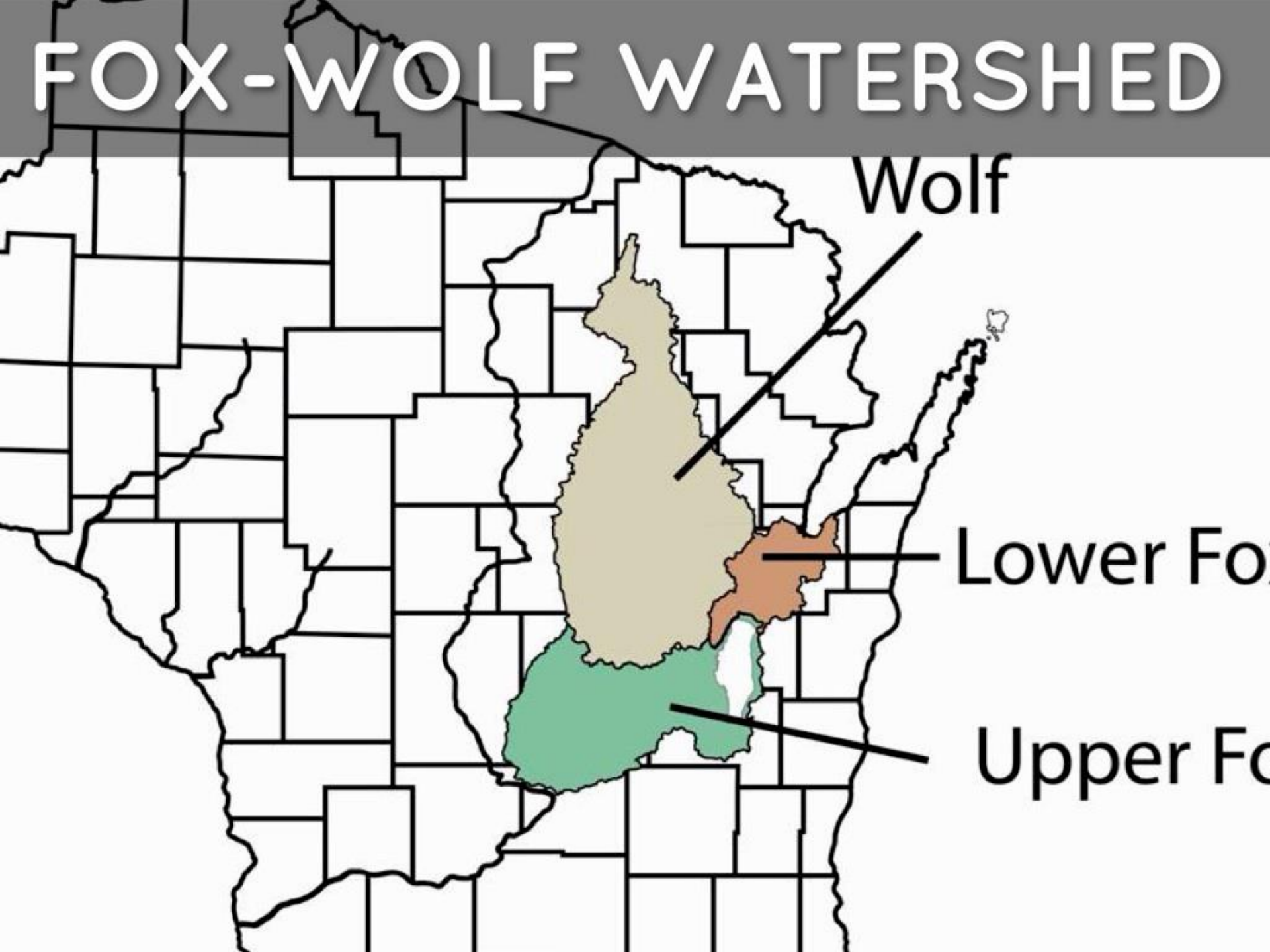
OUR WORLD, OUR PEOPLE

LAND AREA WHERE ALL WATER FLOWS TO THE SAME PLACE

WATERSHED



FOX-WOLF WATERSHED



Wolf

Lower Fox

Upper Fox

PROTECT THE WATER



I COULD BE THE NEXT TEDDY ROOSEVELT!



I WASH MY CAR ON MY LAWN
OUR WATERSHED DOESN'T HAVE 9 LIVES



I CAN TAKE SHORTER SHOWERS

CONSERVE



WE CAN HELP

I WILL USE A RAIN BARREL



Make checks payable to
PHS AP

Plaus (Bio Assignments)

Genecycle, test	Cancer family History 4 info for tomorrow
T Website Work Day - Blog	18.1 outline, due tomorrow
W 18.1 HW check and viruses	18.2 outline due Fri
Th Website Work Day	

After school!
Wednesday 3:00
Thursday
7:00 am
extra credit meeting

APES Reminders

Unit 6 Take Home due Wed (honor code)
AOC video edits due Wed
Ch. 14 outline due Fri
Sunday AOC Event



www.pulaski.k12.mo.us • www.pulaski.k12.mo.us

PULASKI HIGH SCHOOL

RED RAIDERS

CHOICES FOR THE FUTURE

RECYCLING PROPERLY



IT AFFECTS US ALL

I WILL CLEAN STORM DRAINS



WISCONSIN
W
SOCCER CAMP

BUCKY'S
Locker Room
Official Licensed Wisconsin Merchandise
buckyslockerroom.com

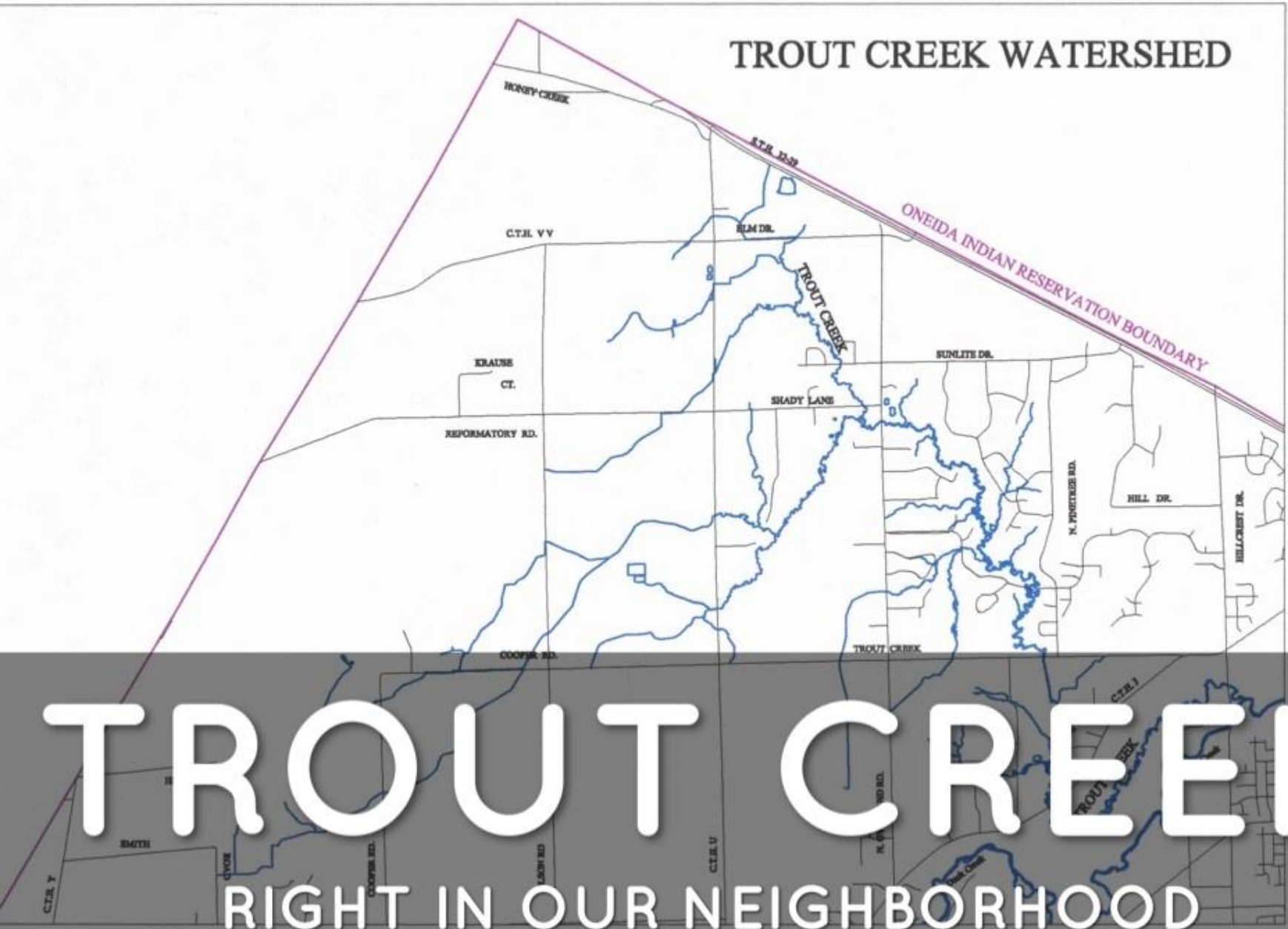
OUR STREAM

OUR WATERSHED

A group of students is engaged in a stream study activity. In the foreground, two girls are looking at something together. In the background, a boy is wading in the stream wearing green rubber boots. The scene is set in a lush, green wooded area with a stream flowing through it. The text is overlaid on a semi-transparent dark band across the middle of the image.

**GETTING TO KNOW OUR STREAM
WORKING WITH STUDENTS FROM ONEIDA HS**

TROUT CREEK WATERSHED



TROUT CREEK

RIGHT IN OUR NEIGHBORHOOD

Scale: N/A

Source: Photography May 6, 1996
Coordinate System: Wisconsin State Plane, Central
Lambert Projection, U.S. Foot
Horizontal Datum: NAD83



GEOGRAPHIC INFORMATION SYSTEMS

N7332 Water Circle Place
Oneida, Wisconsin





STREAM TESTING

TO GET INVOLVED

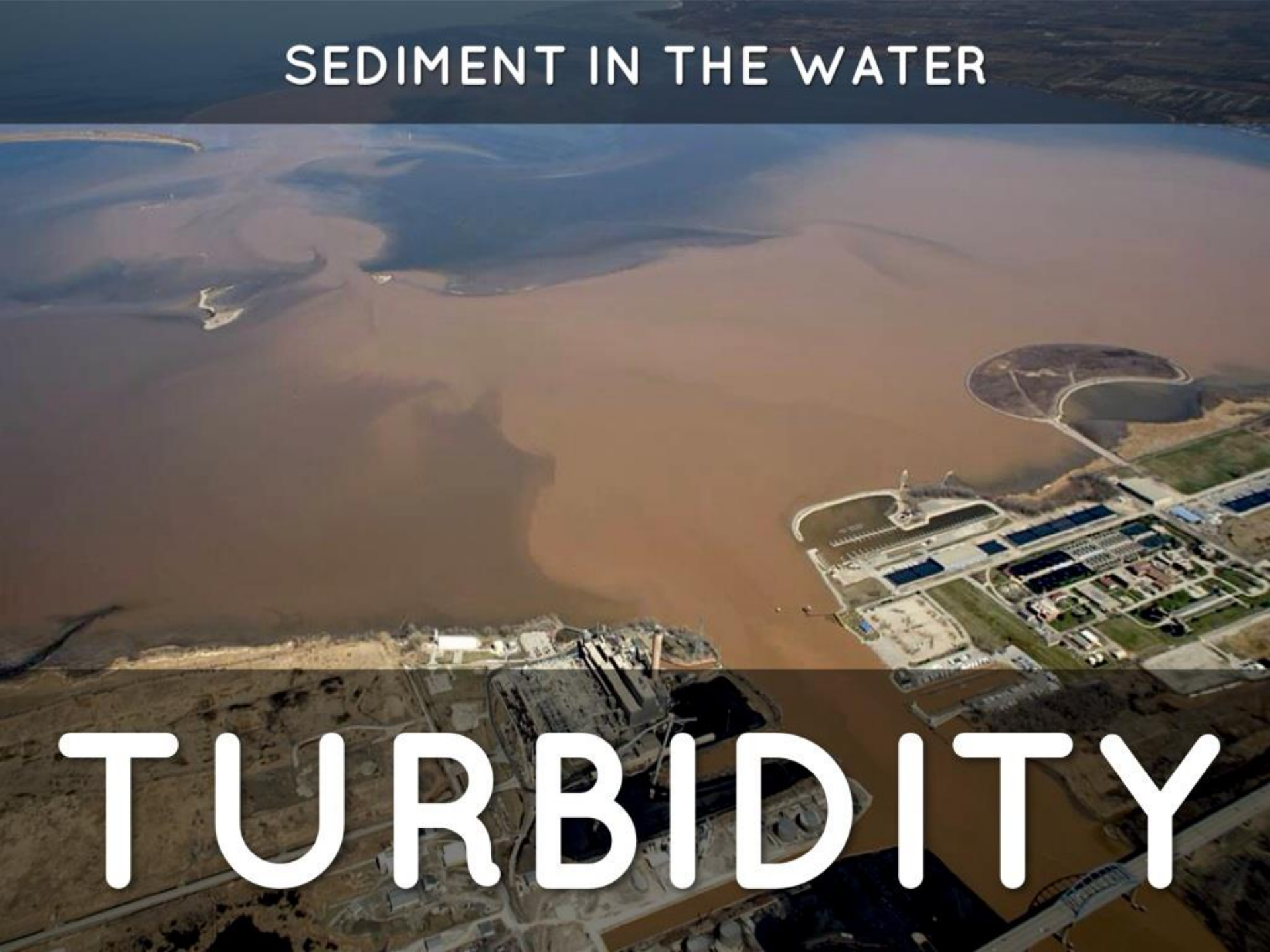


WATER CYCLE

WHAT HAPPENS AFTER PRECIPITATION HITS THE GROUND?

SEDIMENT IN THE WATER

TURBIDITY





**STREAM HEALTH TEST
MACROINVERTEBRATE SAMPLING**

Group 1: These are sensitive to pollutants. Circle each animal found.



Stonefly Larva



Dobsonfly Larva



Alderfly Larva



Water Snipe Fly Larva

No. of group 1 animals circled:

Relative Size Key:



Group 2: These are semi-sensitive to pollutants. Circle each animal found.

INSECTS



Caddisfly Larva*

*All Caddisfly Larvae = 1



Dragonfly Larva



Water Penny



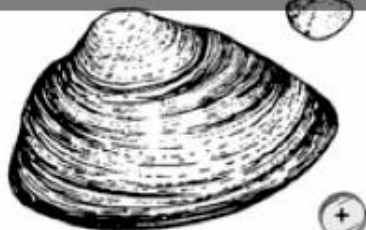
Crawfish

No. of group 2 animals circled:

CAN SHOW US STREAM HEALTH



Crane Fly Larva



Freshwater Mussel or Fingernail clam



Mayfly Larva



Damselfly Larva



Damselfly tail (side view)

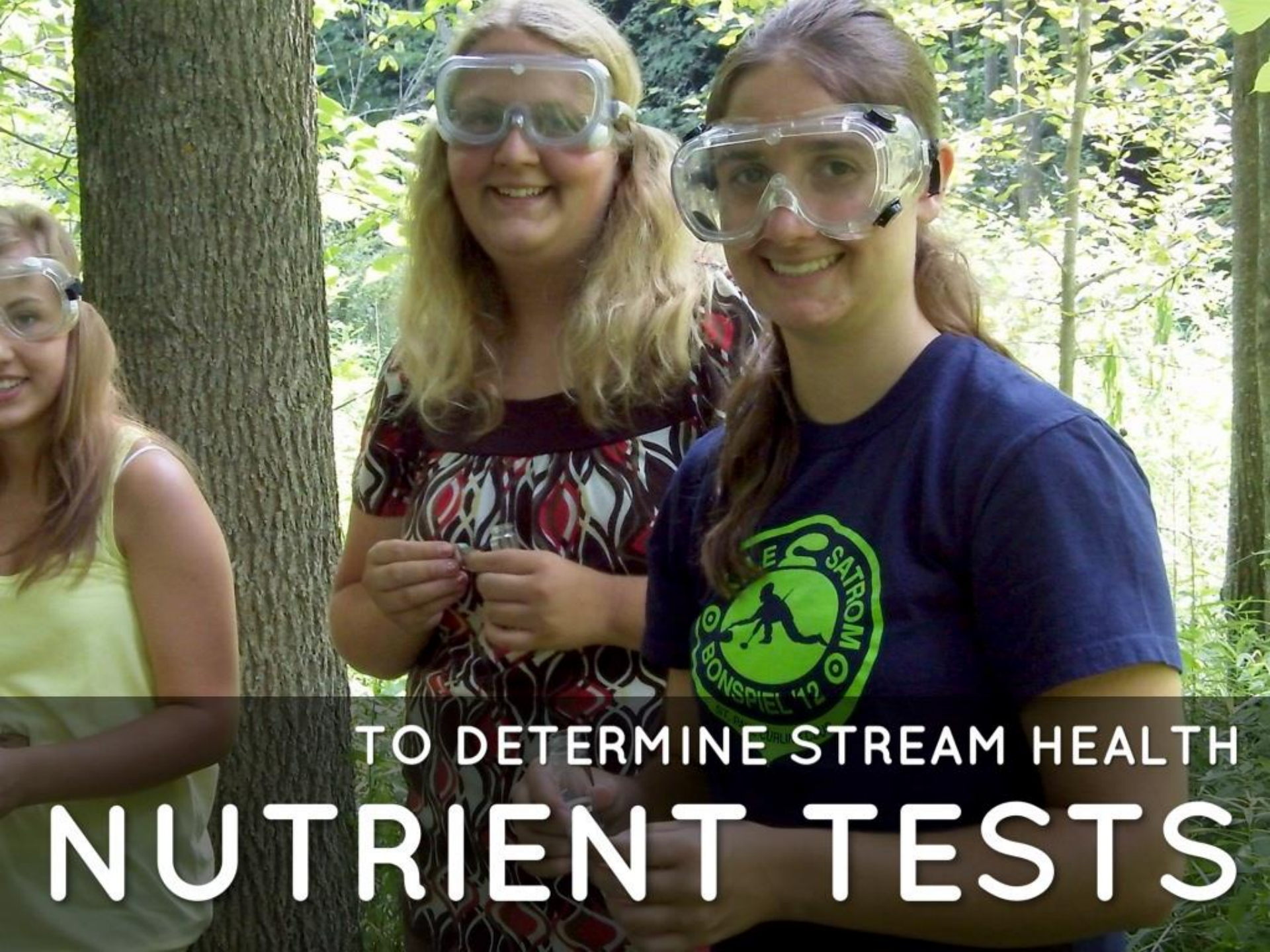


Riffle Beetle Larva*



Riffle Beetle Adult*

*All Riffle Beetles = 1



TO DETERMINE STREAM HEALTH

NUTRIENT TESTS



TROUT CREEK

SUCCESSES

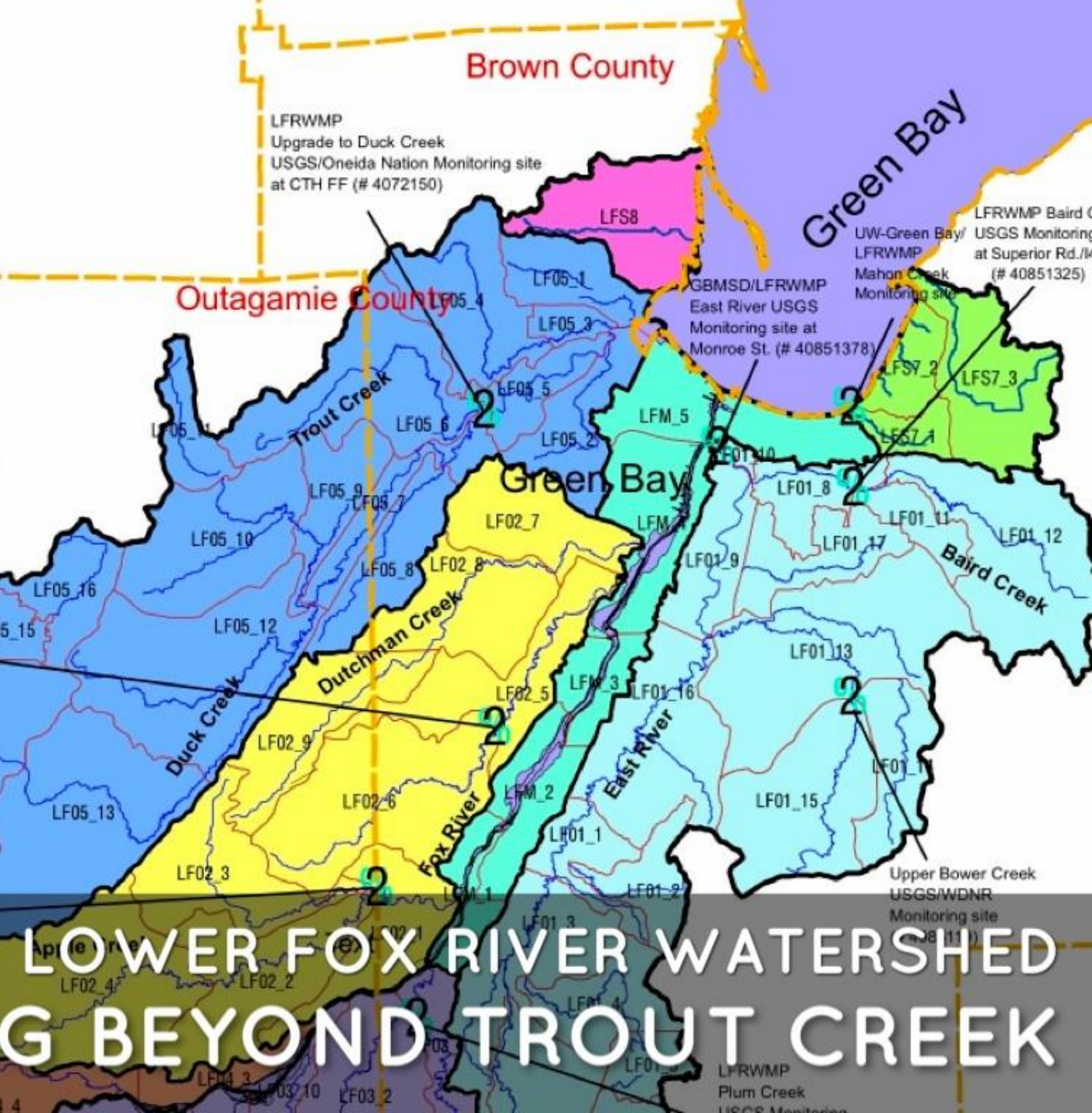
2 Monitoring Stations

County Boundary

- County Boundary
- Major Watershed Boundary
- Sub-watershed boundaries

Watersheds

- East River - LF01
- Apple and Ashwaubenon Creeks - LF02
- Plum Creek - LF03
- Fox River Appleton - LF04
- Duck Creek - LF05
- LLBDM - LF06
- Lower Fox - Main Channel - LFM
- East Shore Green Bay - LFS7
- West Shore Green Bay - LFS8



**THE LOWER FOX RIVER WATERSHED
LOOKING BEYOND TROUT CREEK**



BEAUTY AND VALUE

MY FAMILY DOESN'T USE PESTICIDES ON OUR FARM



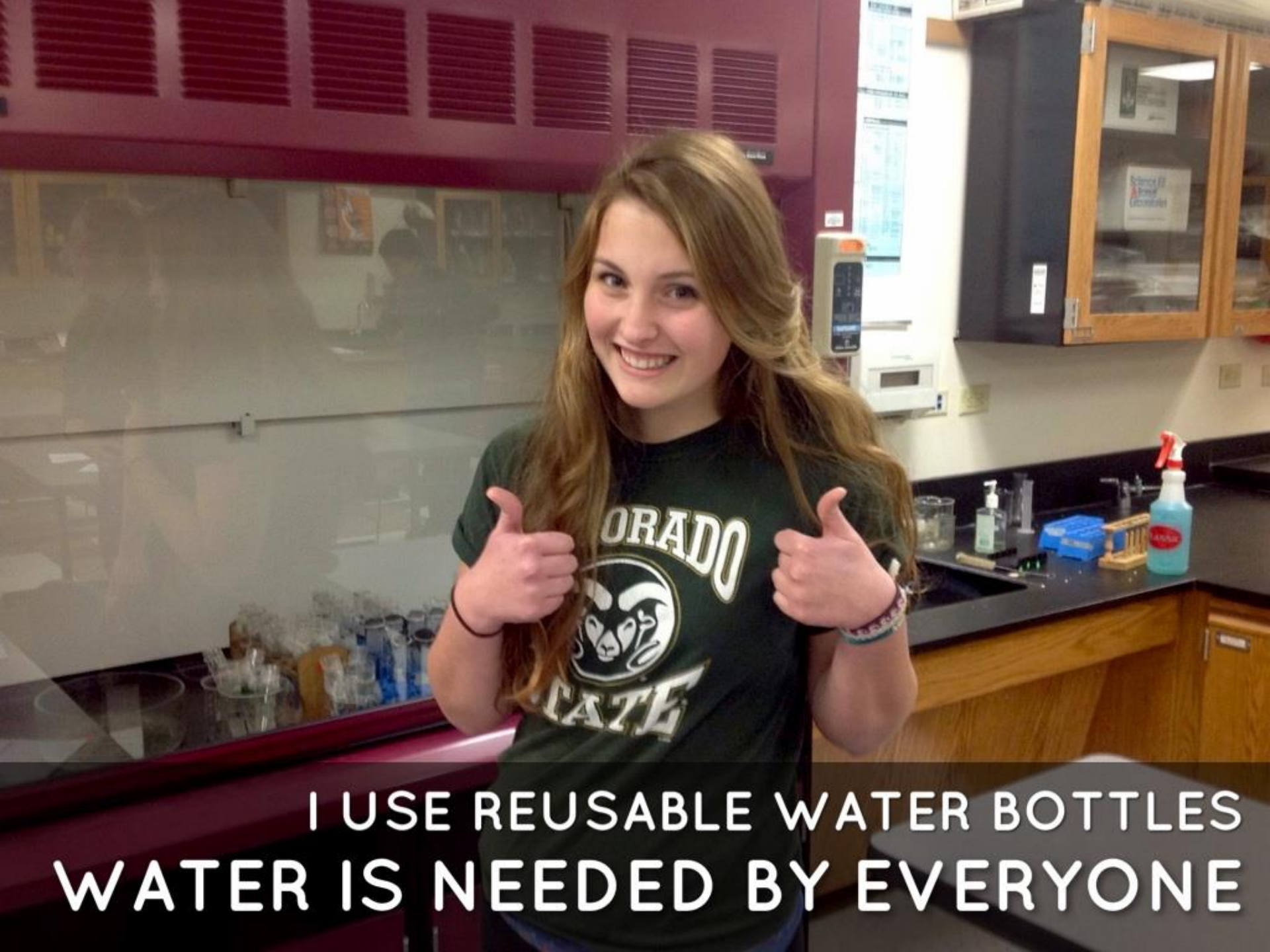
WATER FOR US AND WILDLIFE
I WANT TO CONTINUE LEARNING



IT ALL GOES BACK TO THE FISH
I WANT TO PLANT TREES AND TAKE CARE OF LAND



CLEAN WATER, CLEAN FISH
I PLAN TO COMPOST



I USE REUSABLE WATER BOTTLES
WATER IS NEEDED BY EVERYONE

A young man with light brown hair and glasses, wearing a grey sweater over a collared shirt, is smiling broadly. He is standing in a classroom. In the background, there are red lockers, wooden cabinets, and several rows of white desks with blue chairs. The ceiling has recessed fluorescent lights. The text "PROTECT WETLANDS" is overlaid in large white letters, and "I SUPPORT RESTORATION PROJECTS" is overlaid in smaller white letters below it.

PROTECT WETLANDS
I SUPPORT RESTORATION PROJECTS



Howard

Green Bay

THE LOWER GREEN BAY

AND FOX RIVER AREA OF CONCERN

Green Bay

River

Baird

Creek

Fox

River

AREA OF CONCERN

VIDEO PROJECTS



**St. Louis
River**

Menominee River



**Lower Green Bay
& Fox River**



**Sheboygan River
& Harbor**



Michigan

COLLABORATION WITH PROFESSIONALS



STUDENT COLLABORATION

IPADS AND IMOVIE HELPED US CREATE VIDEOS



USING TECHNOLOGY



CITIZEN ACTIONS MATTER
IN PROTECTING THE ENVIRONMENT



**WE HOPE YOU ARE INSPIRED
TO TAKE HELP AND TAKE ACTION**



FOCUS ON SOLUTIONS
EVEN SMALL CONSERVATION ACTIONS HELP



RESOURCES WE USE ARE NOT FREE

I WANT TO SEE MORE GREEN SPACE AND PROTECTED RESOURCES



Be YOU!

THE GREAT LAKES

of
Billion

MOVIE

Mr. Zolt Shulky
49, 41 46
Suzanne Kyle
14 1 26

Ag LAB I PADS
6-KPI-28

WE CHANGE



PULASKI
SCHOOL DISTRICT

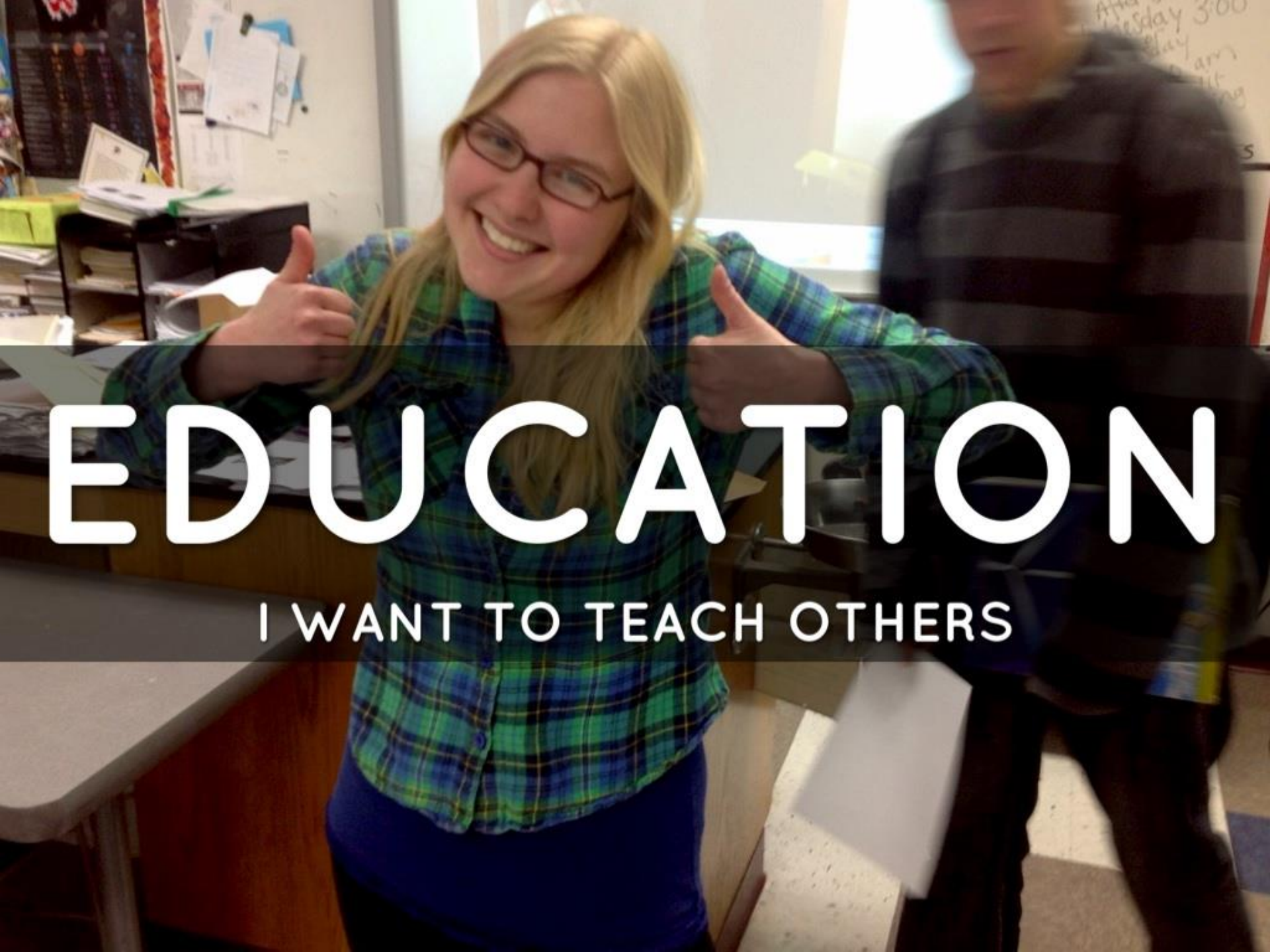
WATER IS PART OF LIFE
I COULD HAVE SOIL TESTS DONE TO PROTECT IT



THINK ABOUT THE FUTURE
I TURN OFF THE WATER WHEN I BRUSH MY TEETH



**I CAN SHARE INFORMATION
AND I CAN HELP CLEAN OUR ENVIRONMENT**



EDUCATION

I WANT TO TEACH OTHERS

FUTURE GENERATIONS CAN FOLLOW OUR LEAD



I CARPOOL AND DRIVE LESS



**THIS IS A BEAUTIFUL AREA
I WANT TO PROTECT IT**

WE ARE CONNECTED TO THE ENVIRONMENT



WE MADE VIDEOS TO RAISE AWARENESS

A photograph of a sandy beach with several footprints. One footprint is visible in the upper center, and a larger, more distinct footprint is in the lower center. A dark horizontal band with white text is overlaid across the middle of the image.

WE CAN MAKE CHANGE
TO HELP NOW AND FOR FUTURE GENERATIONS