



UNIVERSITY *of* WISCONSIN

GREEN BAY

**WELCOME**

**FOCUS**

**Parent Session**



UNIVERSITY *of* WISCONSIN

GREEN BAY

# DEAN OF STUDENTS PANEL

**(920)465-2152**

**[www.uwgb.edu/deanofstudents](http://www.uwgb.edu/deanofstudents)**

# Dean of Students: Who We Are



**Brenda Amenson-Hill**

Dean of Students

**Mike Stearney**

Dean for Enrollment  
and Academic Services

**Mark Olkowski**

Judicial Affairs Coordinator

**Todd Sanders**

Webmaster

**Lore Slattery**

Program Assistant

**Toni Bergeon**

Program Assistant

**Amanda Wildenberg**

Program Assistant



# Dean of Students: What We Do



- Serve as a General Resource for Students and Faculty
- Solve Non-Academic Problems & Issues
- Prevent & Respond to Student Misconduct
- Advise Student Government Leaders
- Supervise all Student Services areas
- Coordinate FOCUS



# Why would my student contact the Dean of Students office?



- Illness or emergency
- Require assistance navigating UWGB
- Complex issues (personal or institutional)
- Need neutral party advice/mediation
- Clarify the student's rights and responsibilities
- At our invitation: Incident Reports
  - Underage alcohol consumption
  - Drug use/abuse
  - Noise violation/disruption



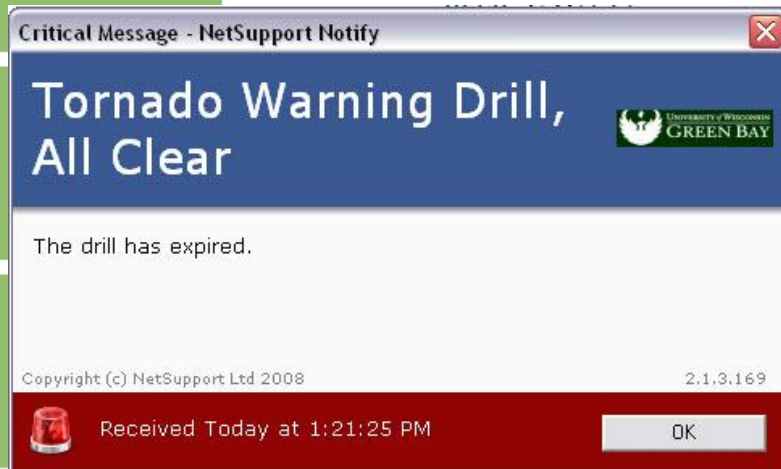
# Public Safety Office: Who We Are



Police and Security Officers provide police  
and security services 24 hours a day,  
7 days a week  
(920) 465-2300 or 911



# Public Safety Office: What We Do



- **Crime Prevention**
  - Student Educational Programs
  - Emergency phones
  - Staff available 24/7
- **Coordinate Emergency Response**
  - Drills
  - Pop-up Messages
  - Text Alerts
  - PA Announcements
- **Incident Resolution**
  - Investigation
  - Coordination w/other agencies
- **Services**
  - Lockouts
  - Bike Licenses and Registration
  - Jumper Cables



# Why would my student contact Public Safety?



- They are a victim or witness of a crime
- They feel they are in physical danger
- To report suspicious or unsafe conditions
- They require non-emergency assistance
  - Locked out of their car, classroom
  - Need an escort
  - Register their bike or valuable property



# Safety Tidbits



- Theft is the #1 victim-based incident reported to Public Safety
- Calling 911 from campus will connect you to Brown County Dispatcher, who will radio a UWGB officer
- UWGB enforces drunk driving and absolute sobriety laws
- We investigate all reports of threats or violent behavior
- Campus location prevents some, but not all crime
- Public Safety phone is 920-465-2300 24/7



# Counseling And Health Services: Who We Are



3 Licensed Counselors

6 Registered Nurses

Contract with:

- MD's and Family Nurse Practitioner
- Psychiatrist
- Clinical Psychologist
- Massage Therapist



# Counseling and Health Services: What We Do



- Free counselor assessment and referral
  - Personal counseling
  - Crisis interventions
  - Sexual assault response
  - Alcohol/other drug assessments and referral services
- Free RN assessment with referral to on/off campus providers
  - Non emergency health needs



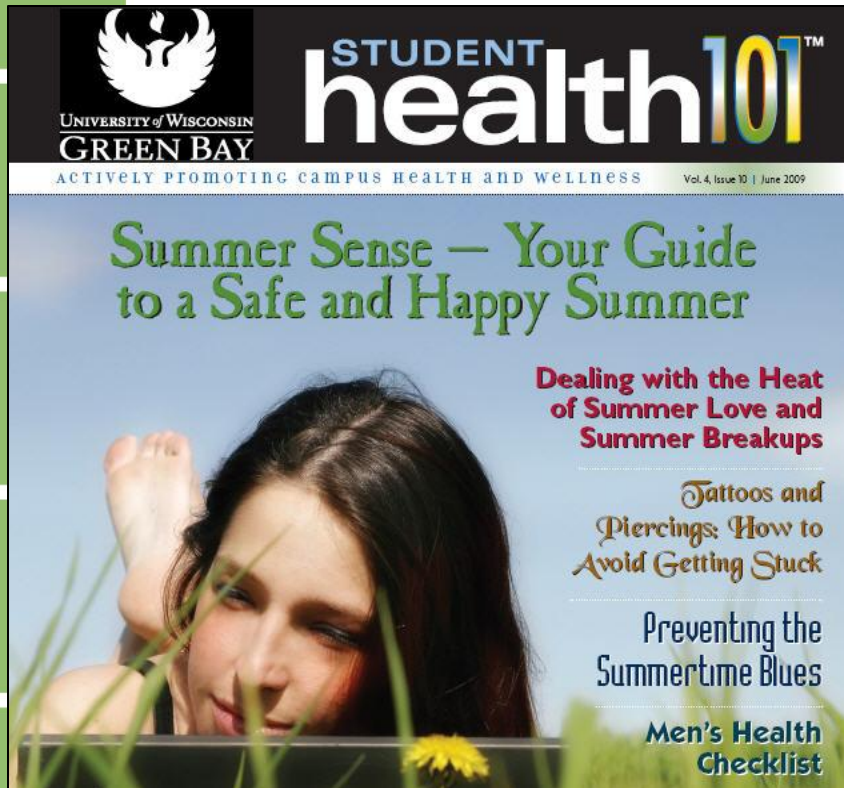
# Why would my student contact Counseling and Health Services?



- They feel anxious/depressed
- Life changes causing stress or health issues
- Personal conflicts
- Other Mental Health or Health Concerns
- They want to be proactive
  - Stop stress before it starts
  - Keep up with academics



# Collaborative Efforts



- Educational Programming
- Student Review Team
  - Emergencies
  - Privacy Rights
- Student Health 101

To sign-up:

Student: <http://readsh101.com/go2uwgb.html>

Parent: <http://readsh101.com/go2uwgb-pp.html>



UNIVERSITY of WISCONSIN  
GREEN BAY

# Case Studies



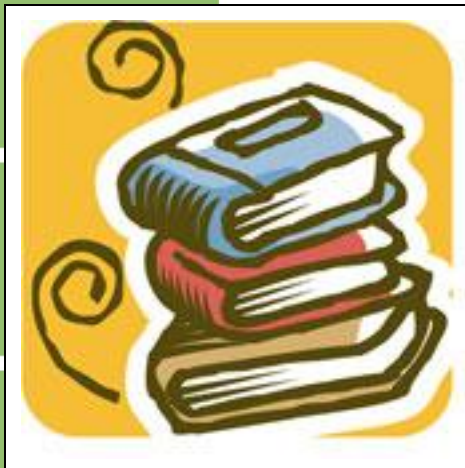
# Case #1: Not Just Noise



- **Incident**
  - Noise complaint/underage drinking
- **Action**
  - Public Safety Incident Report
  - Referral to DOS
- **Resolution**
  - Peer Board sanctions educational experience
  - Parental Notification
- **Lessons for Parents:**
  - OUR COMMITMENT: LAWS ARE ENFORCED
  - OUR APPROACH: TEAMWORK
  - OUR PHILOSOPHY: EDUCATE TO REDUCE RISK



# Case #2: Academic Challenges



- **Issue**
  - Welfare check requested by parent on weekend
  - Concern re: increased stress, diabetes, not taking insulin as scheduled
- **Action**
  - Public Safety officer makes contact
  - Referral to Dean of Students
- **Resolution**
  - Sort out personal and academic dimensions of problem
  - Delineate options & alternatives
  - Facilitate student decision
  - Referral to Counseling and Health for stress and medical management
- **Lessons for Parents:**
  - OUR COMMITMENT: Student well-being
  - OUR APPROACH: Facilitated problem-solving, follow-through
  - OUR PHILOSOPHY: Students will make good decisions with good info



# Questions & Answers

