



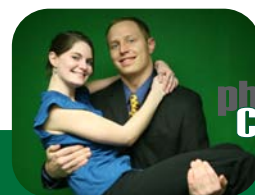
March 4, 2008

## Phlash TV Premiere Week March 4th - 8th

New Episodes of Jaded Nights, Phoenix Connexion, On the Reel and On the Ball!

### We might as well win!

The Wisconsin Broadcasters Association recognized Channel 20 for the second straight year in a row. We took home two 2nd place awards and three 1st place awards! We had more first place finishes than any other school in state, at the recent Student Awards for Excellence. Our "Shorewood Golf Course" commercial made by Jason Vincent was hailed as **"One of, if not the best student made commercial I've ever seen"** by **WBA President Ken Beno**. More award winning programming is coming your way this spring! if you want to view our award winning pieces visit our website.



Drew Kopitzke and Kelly Pfeifer rejoin for another season of **Phoenix Connexion**. New this season is a segment called "Rolling in the Dough" where a key phrase will be announced and viewers can e-mail Channel 20 with the key phrase to be entered for their chance to win a FREE PIZZA. Don't miss your chance to win!

**On the Reel** is back for another season of letting you know what great flicks are appearing around Green Bay. Whether its thumbs up, 3 stars, or tomatoes, Jon Gracer & Julie McCloskey will keep you informed!



Do you enjoy watching Stephen Colbert, and Jon Stewart? Then **Jaded Nights** is for you! This year started out strong with Tim Maylander performing live on campus during the Frost Fest lock-in. The show featured a new episode of Mullet Man and musical guest Bluesheels. If you missed the live performance you can watch reruns on Channel 20 the week of March 4th. Maylander's live show is only the beginning for Jaded Nights, so stay tuned and check what's coming up next.

Want to get involved with Phlash TV?  
Check out our website for more info at  
[www.uwgb.edu/channel20](http://www.uwgb.edu/channel20)

Catch **On the Ball** every week after Phoenix Connexion. This award-winning show keeps you up to date on sports both local and national. Host Ben Krumholz will help you follow the action and even make predictions of his own.



Check out the next page for a printable weekly schedule!

For more information visit our website or email us:

[www.uwgb.edu/channel20](http://www.uwgb.edu/channel20) email: [Channel20@uwgb.edu](mailto:Channel20@uwgb.edu)