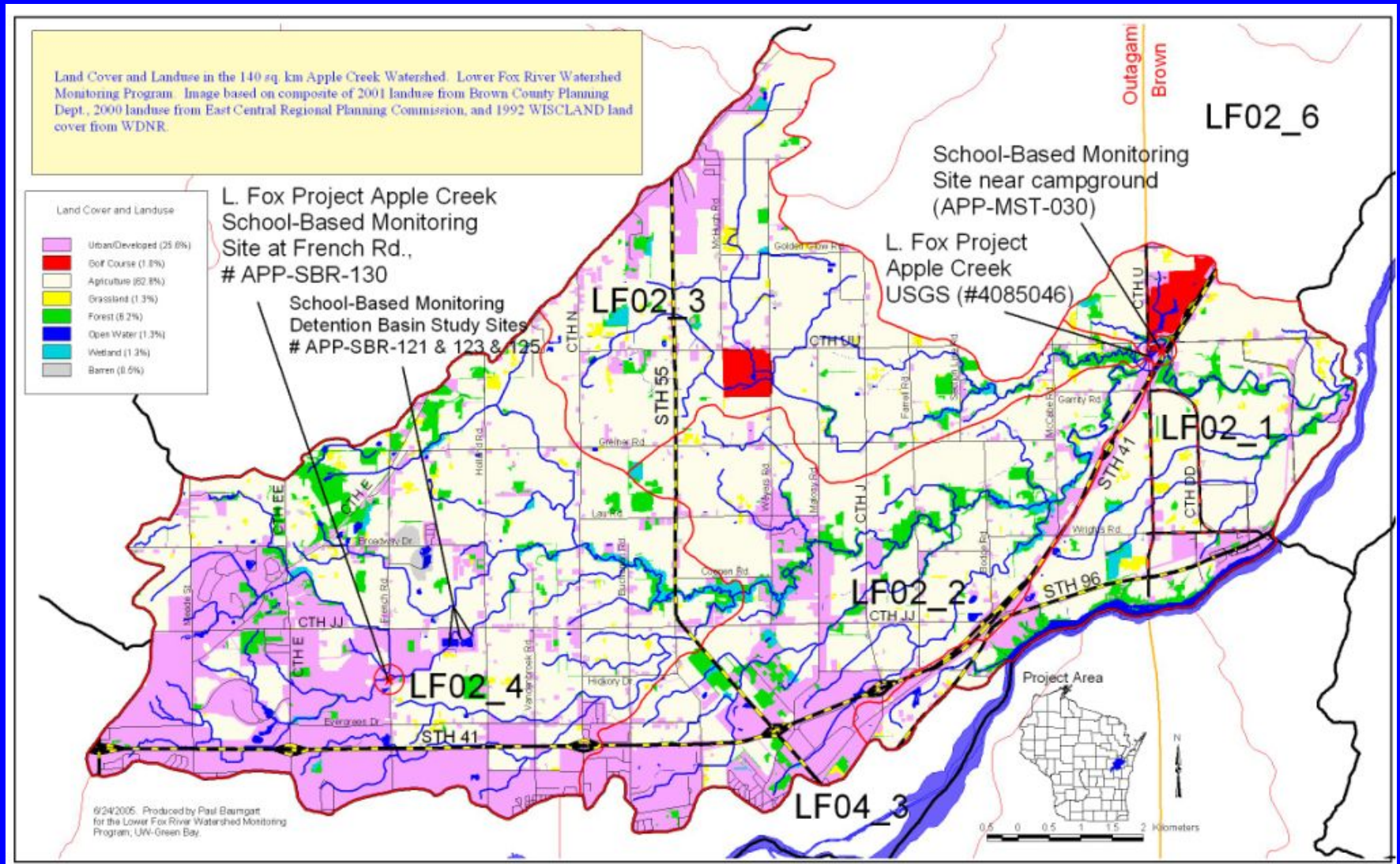


APPLE CREEK MONITORING SUMMARY

Appleton East

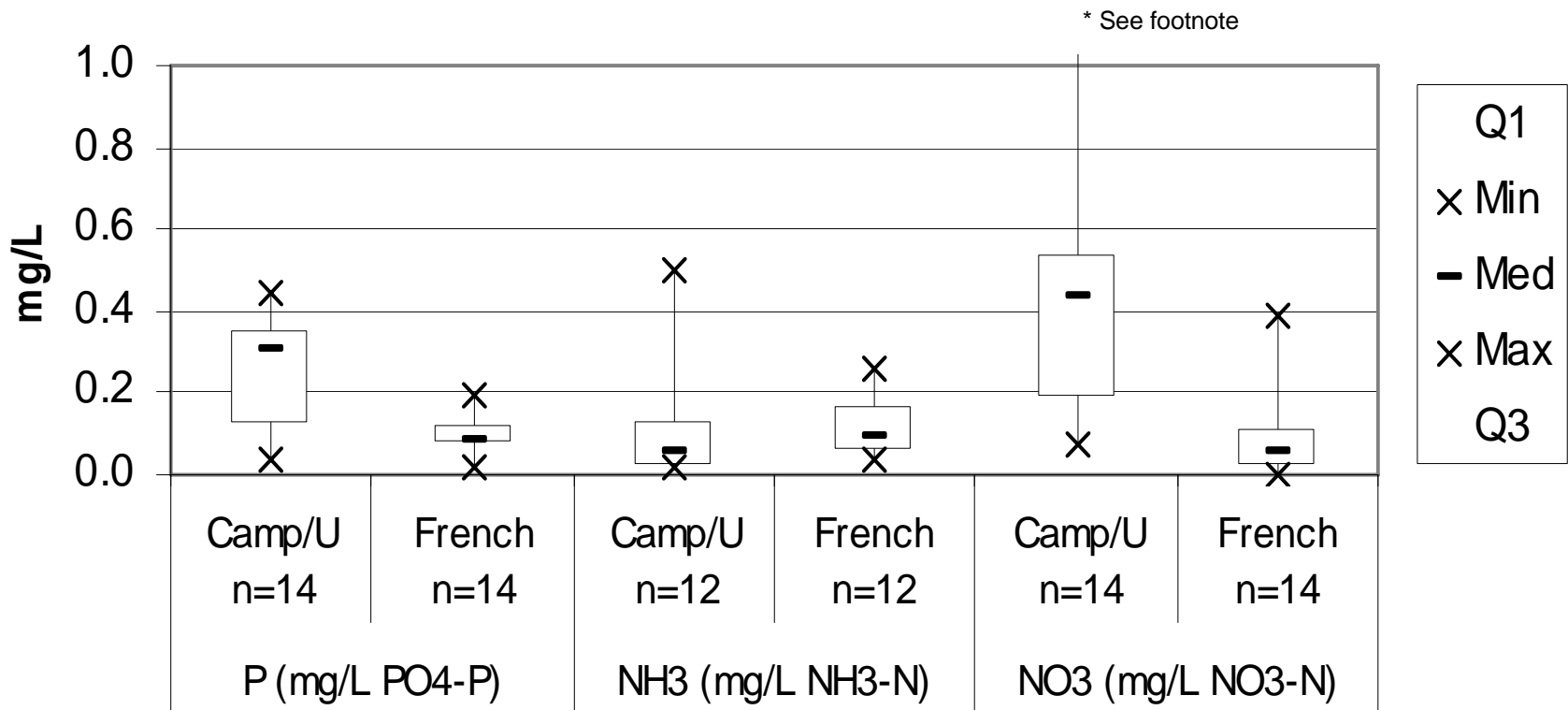
Apple Creek Watershed





Comparison Between Sites – Nutrients

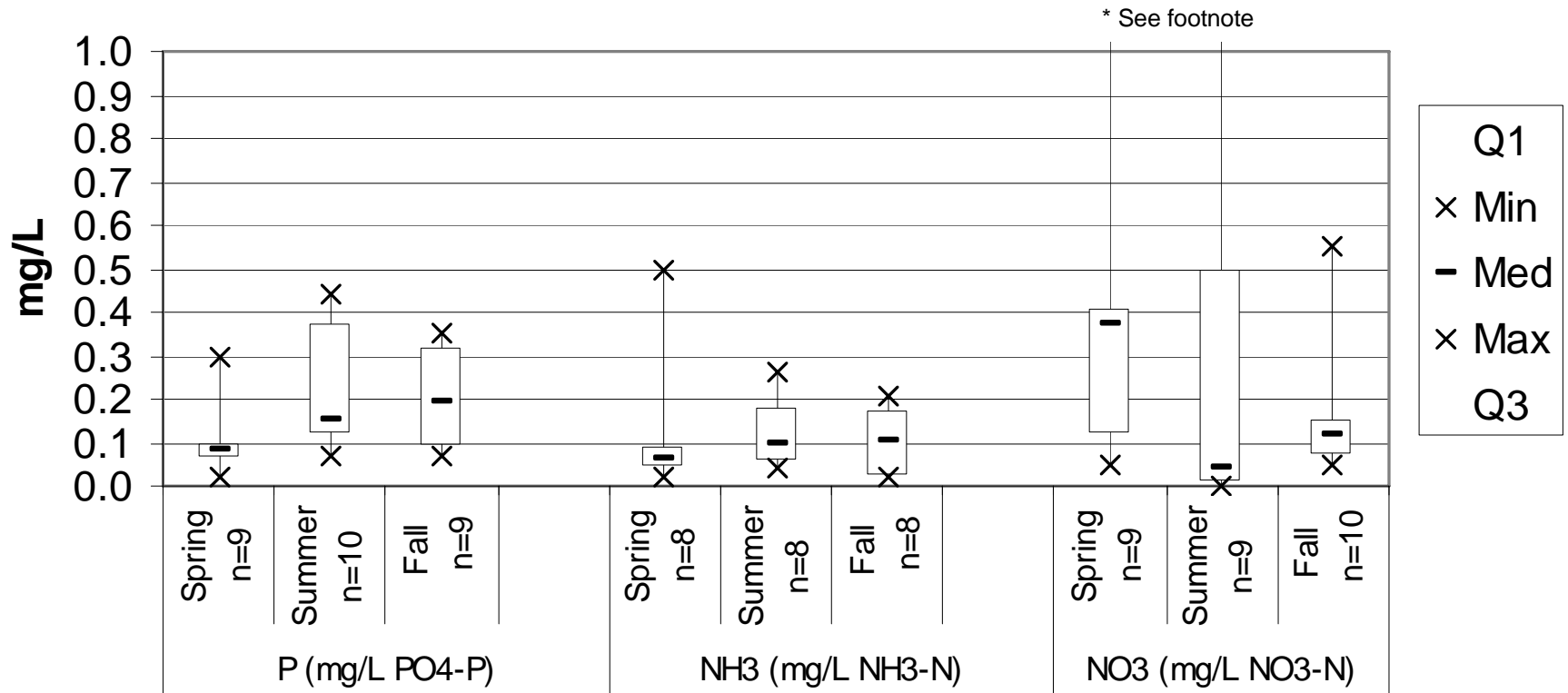
Apple Creek Water Quality - Site Comparison



* For Site Camp/U Max = 2.9

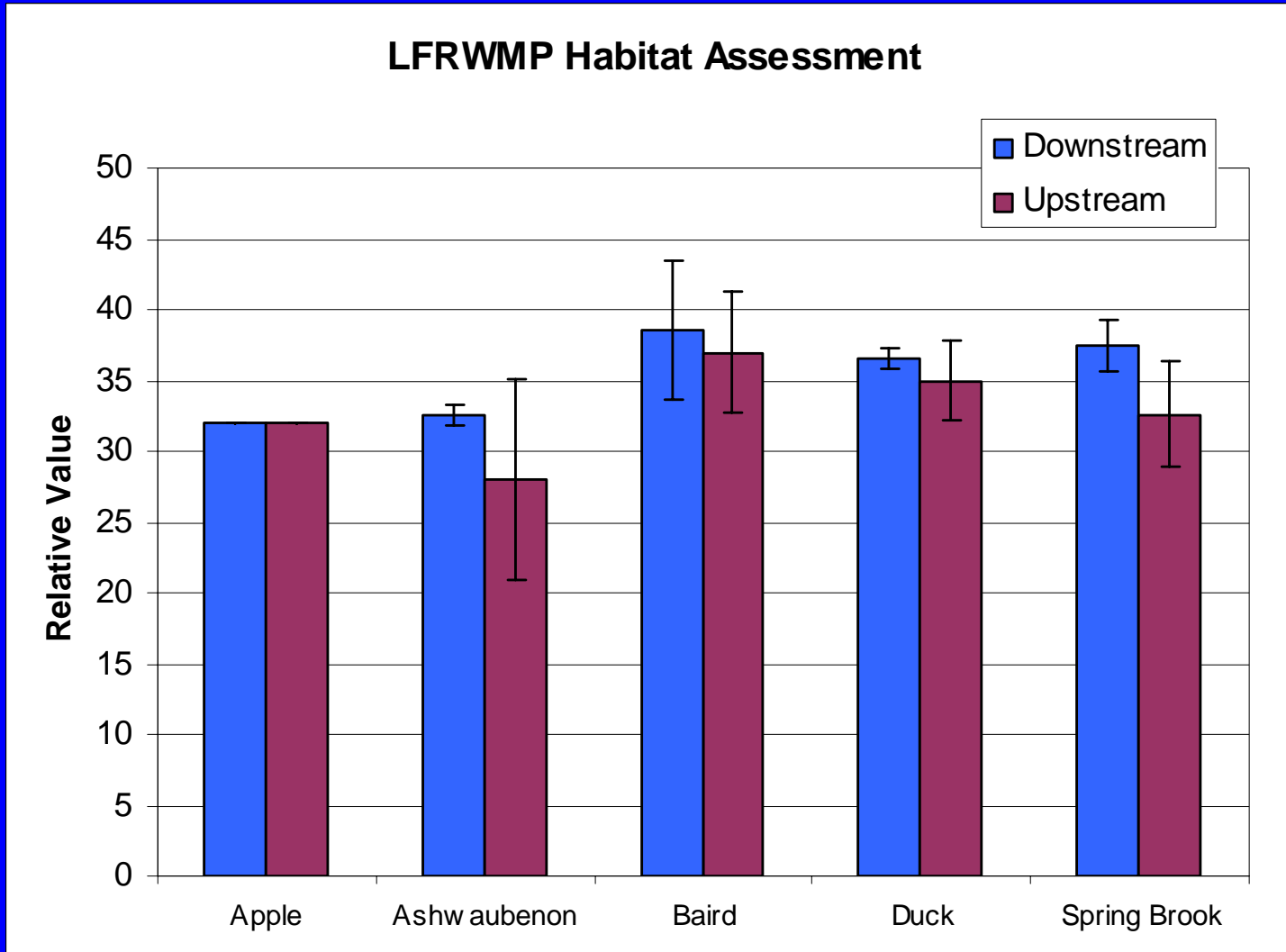
Comparison Between Seasons – Nutrients

Apple Creek Water Quality - Seasonal Comparison



* For NO3 Spring season Max = 1.1. For Summer season Max = 2.9

Habitat Assessment



Note: Highest possible value is a 52!!