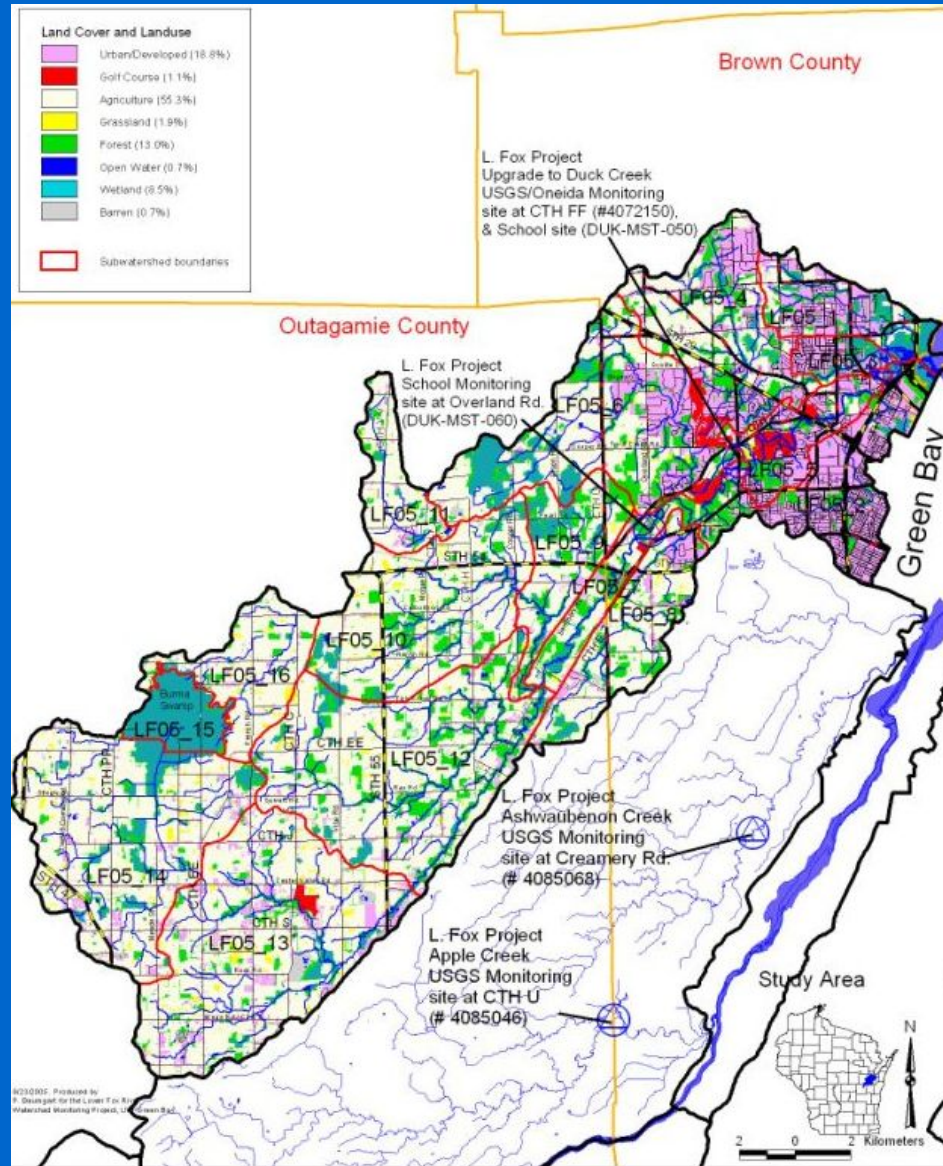


DUCK CREEK MONITORING SUMMARY

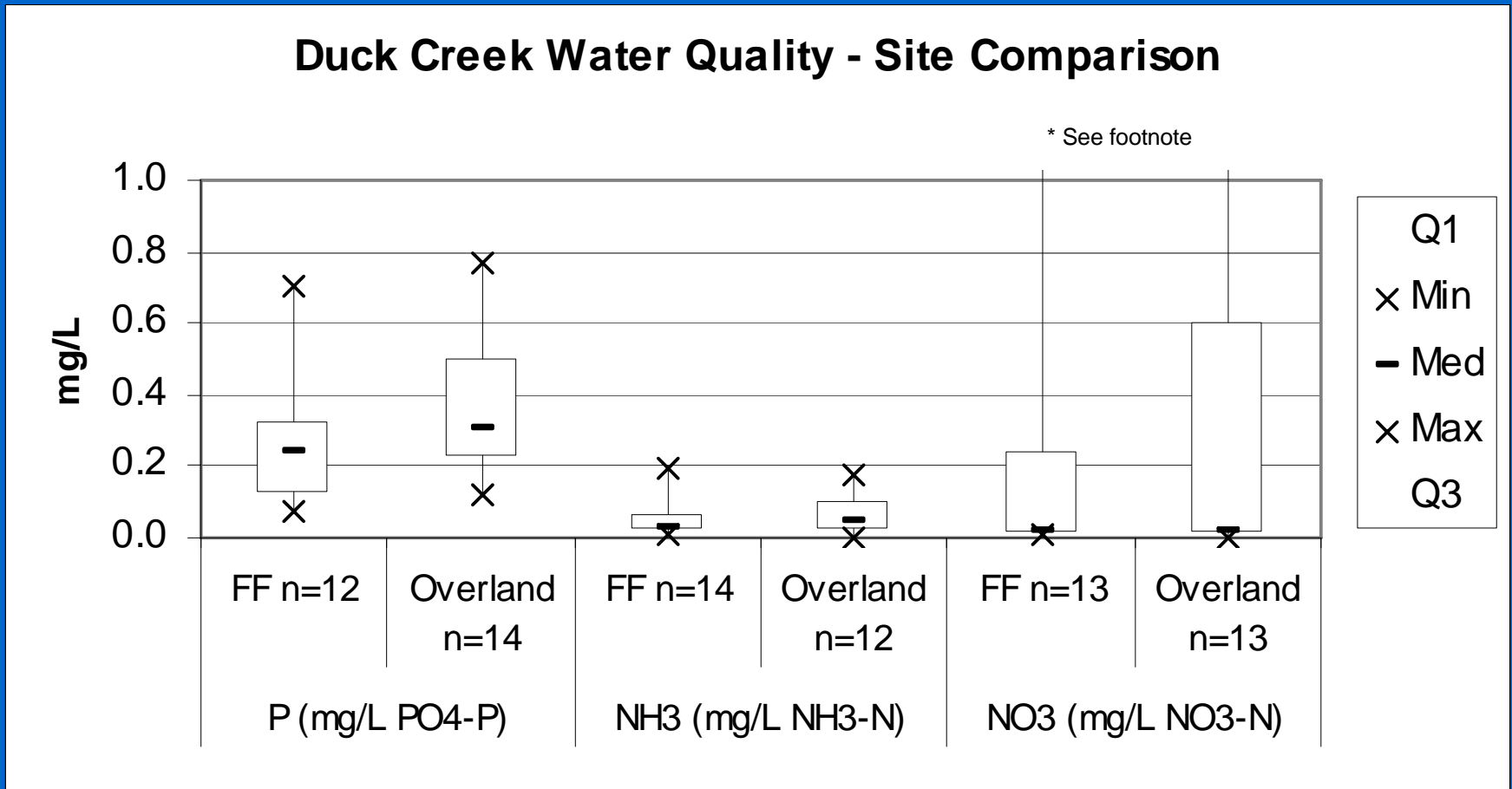
Green Bay Southwest

Duck Creek Watershed





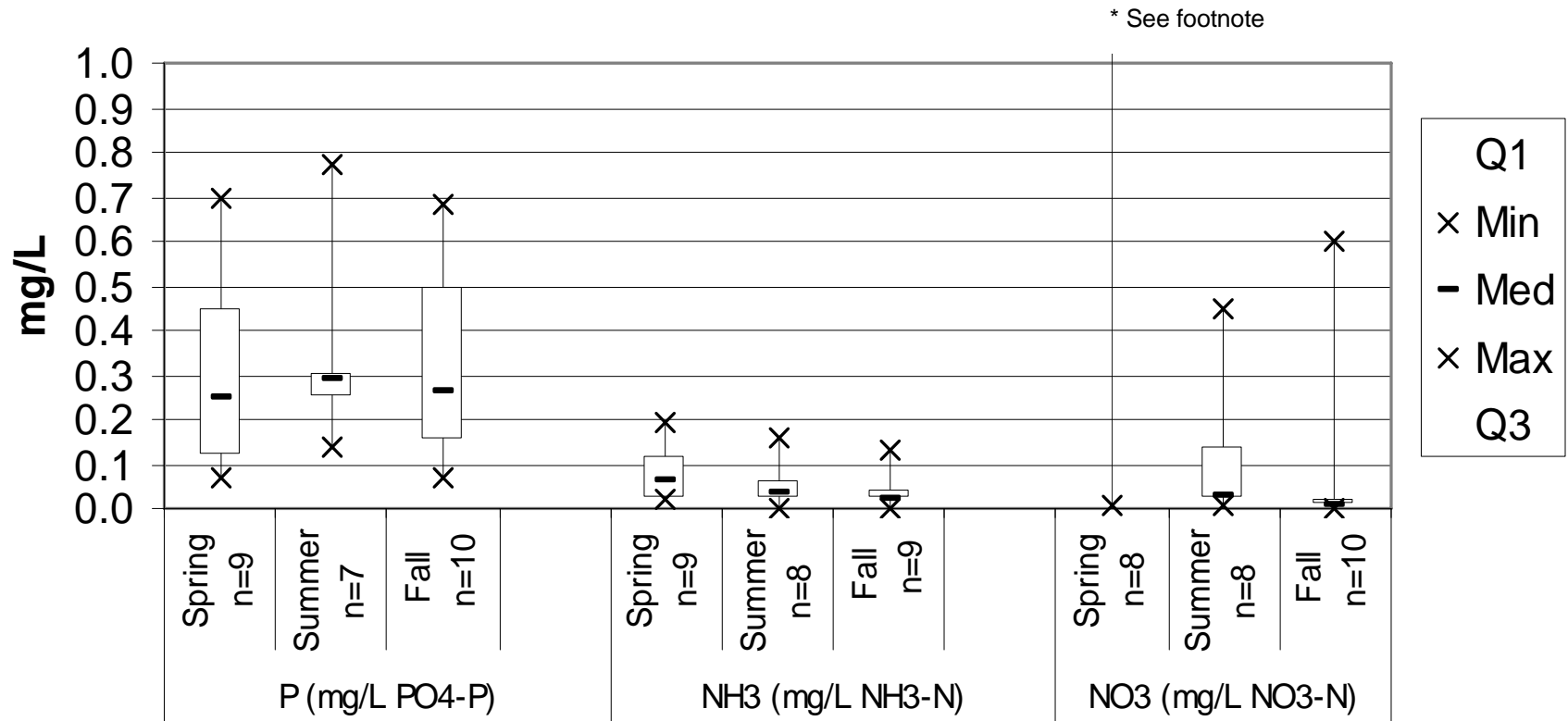
Comparison Between Sites – Nutrients



* For site FF Max = 21.9. For site Overland Max = 20.2

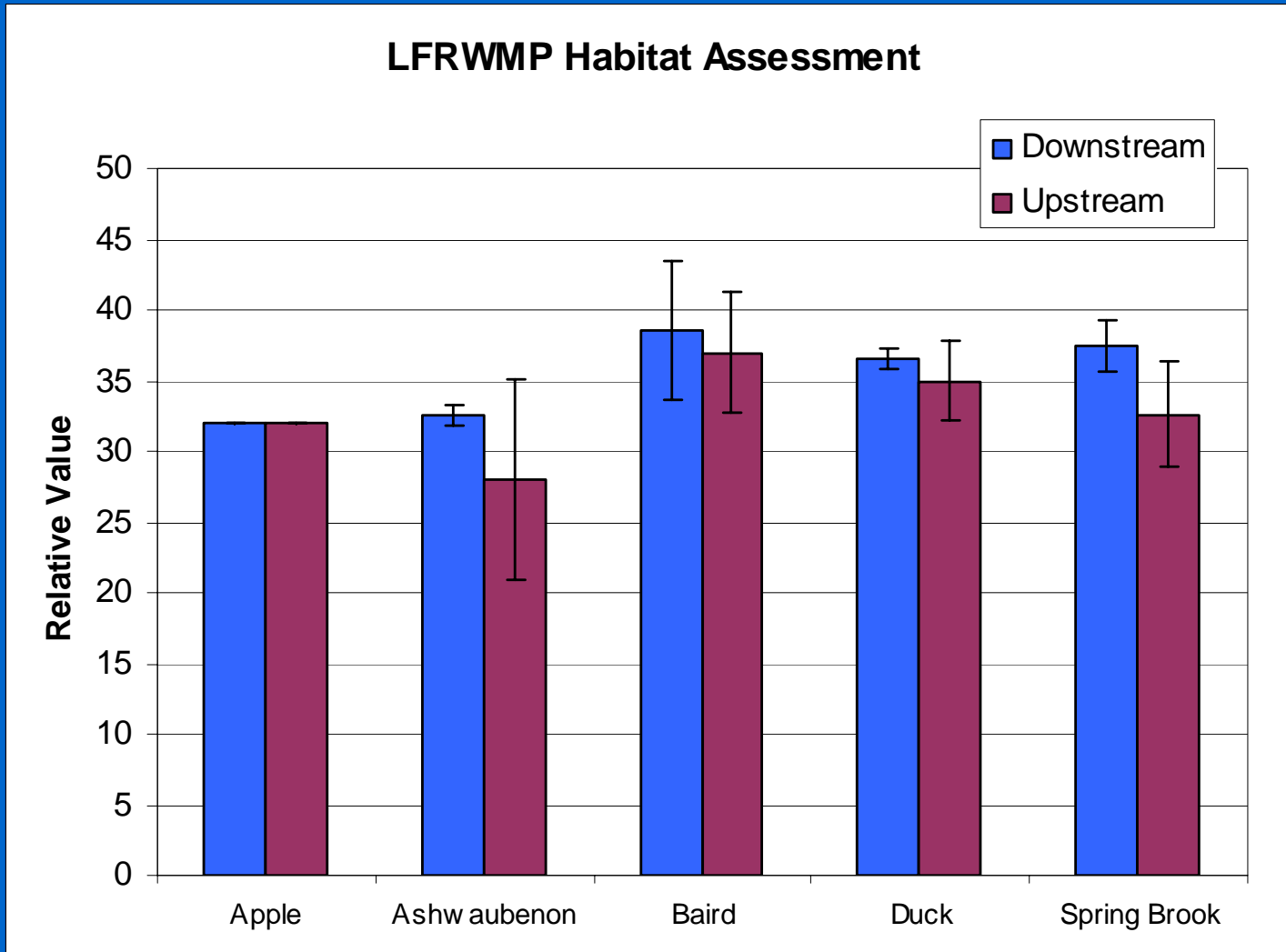
Comparison Between Seasons – Nutrients

Duck Creek Water Quality - Seasonal Comparison



* For NO3 Spring season Q1 = 1.05, Med = 2.85, Q3 = 9.4, and Max = 21.9

Habitat Assessment



Note: Highest possible value is a 52!!