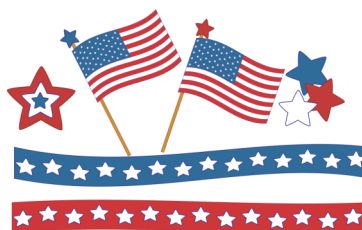


2018
July/August



The Newsletter of Lifelong Learning

LLI Matters

President's Message by Wes Cavenough

I would like to thank Nancy McGrew for her leadership over the past two years. Nancy has kept us moving forward. I am sure she is looking for some quiet time now that she is no longer president. Thank you all for giving me the privilege of being your next president. I hope to keep the organization going forward and continuing to improve its programs. This is my second time as president but we were much smaller during my first term. We have added many more responsibilities to the position so I sincerely hope that I am ready and able to continue our growth and experiences. I encourage you to be a more active member in LLI. This is an organization run by volunteers. Without them we would not have the program we have. Most committees are in need of new members and the chairs would encourage you to attend a meeting or two of the committee(s) you are interested in to see how they operate and what exactly they do for the organization. We need a chair for our new IT committee as well as a couple of members. If you are knowledgeable about computers and the current programs in use, please consider this committee. Presently Fred Delie is the chair but was elected vice president and cannot hold two offices simultaneously. If you have any questions about this committee and what it does please contact Fred. The Travel committee has become much more active and will need people to help plan trips. These are only a few ways in which you can volunteer to help the organization. I am anxiously waiting to see the fall catalog and the courses that the curriculum committee has put together for us. If you have any suggestions or concerns please let me know and I will see what can be done.



Telling the LLI Story--

Do you know someone who is interested in being active mentally, physically, and socially? Then perhaps you need to share the LLI story with that person. Person to person sharing of this great organization is the most productive means of garnering new members.

On July 25, 2018 from 10:00 to 12:00 at the Neville Public Museum interested people and potential new members can "sample" LLI. The communication committee is holding "The Introduction to the Lifelong Learning Program" overview. The program includes a presentation of what LLI is, two sample classes, (30 minutes each), a Q&A session and registration information.

Up-Coming Events

- "Introduction to the Lifelong Learning Program, Neville Public Museum, July 25, 10:00-12:00
- Dutch Treat Breakfast July 25, 8:30 Bay Family Restaurant
- Dutch Treat Breakfast August 22, 8:30 Bay Family Restaurant
- Art Street, August 25-26, downtown Green Bay
- "Fall Kick Off", September 26, 2018 Swan Club at Legends, 11:00

Inside this issue		
Fall Registration	P.	2
Committee Reports	P.	2,3,4
Board of Directors	P.	5
LLI interest	P.	5,6,7
Social Breakfast	P.	7

Fall Semester

Fall Semester is coming! Catalogs will be mailed July 13th. It contains over 200 classes. Some courses are repeats, some are continuing, and some are new. Here are just a few titles to whet your appetite: "Wings of Morning—Air War in Europe", "Travels in Turkey", "Basic Ballroom Dancing", "The Doughnut Girls Story—WWI through WWII", "Seroogy's Chocolate". Of course there are many more and soon you will be able to peruse the catalog and determine your choices. If you can not wait you can check out the catalog on-line at our website, UWGB/LLI.

Lottery Registration

On-line lottery registration begins **July 16th** and closes the evening of **August 3rd**. Confirmation letters will be mailed on **August 10th** verifying your lottery registration. A member can register for up to **30** classes during the lottery. Remember to prioritize your choices by number. Number 1 should be your first priority, number 30 should be your last priority. You do not need to register for 30 classes, you should register for the number you wish to take.

This year the board passed two procedure changes that affect registration.

1. There is no supplemental registration. In other words, a member can register for classes only once, either during the lottery or after the lottery. Members can NOT add additional classes through the office after they receive their confirmation letters. However, members may contact the coordinator of a class to add the class if there is space available.

2. There is no wait list. If a member does not get into a desired class (full class) the member can contact the coordinator of the class to be notified if an opening occurs.

In summary: LLI has two registration periods—lottery registration and open registration. Members can register at either one but not at both. After registration, contact the coordinator to enroll in an open course.

On-line registration is preferred—if you are a returning member you will receive an email link for registration. New members may register through the LLI website by clicking on the registration link.

All registration details, policy notes and pertinent information is found in the catalog. Please read it carefully. Please save your catalog for reference during the semester.

All of us look forward to another exciting semester of learning for the fun of it. Thank you Curriculum committee!

Social Committee – Karen Carvenough, Chair

Socials, why we have them: A social is a way for our members to come together, meet new people and enjoy a relaxing time talking with old friends, all under the guise of sharing a meal. The LLI Social Committee hopes that you have enjoyed our past events and will continue to attend the ones in the future.

There is a lot of preparation that goes into making each social event a success. Our members meet to brainstorm ideas for decorations, venue locations, entertainment and menu choices. Once the decisions have been made, the creative powers of the group must execute their plan under a strict budget. We also must keep in mind the budgets of our members by offering a good meal at a reasonable price.

Good volunteers on this committee make for a successful event and we are always looking for new volunteers to bring a new perspective to our socials. We welcome suggestions from anyone on how we can improve these events for you who attend them and make them more appealing to those who have not. So please mark your calendars for this coming academic year's events and consider joining our group to help make them even better than before.

Fall Kick Off – The Swan Club at Legends – September 26th – noon luncheon

Winter Social – Riverside Ballroom – December 5th – noon luncheon

Spring Fling and Annual Meeting 2019 – The Tundra Lodge – May 1st – noon luncheon



Volunteer Development Committee by Jan Rickert

Volunteers, the backbone of LLI, were honored, as the VDC hosted the first annual Volunteer Appreciation Reception on Thursday, May 17, at the Mauthe Center. The event was enjoyed by over 50 volunteers from all Committees, the BOD members, and the Office workers. Three of the Founding members of LLI (June McCotter, Zeta Turriff, and Leo Yelle) who attended, were honored with a long stem rose.

Under the leadership of Barb Mohr, the Mauthe took on a festive air with cloth covered tables and fresh floral centerpieces (each won by a member). Ed Smith made a continual loop power point showing photos of members and activities, both past and present along with copies of the first Newsletter/Catalog... Yes, it was one publication and only 4 pages!

Also, I want to thank all the coordinators, who made my job easy, by stepping up when asked, especially this past semester, with weather cancellations, rescheduled classes, illnesses and other personal issues. Pati Wiegand has agreed to become the official Chair of this committee as of July 1, for which I'm deeply appreciative. Her contact information is pati_927@yahoo.com. I will remain as a "co-chair" of sorts, in that I will be sending out those infamous emails, Subject: "Request for Coordinators"!



Finance Committee by Ron Niesing, Treasurer

A Penny Saved.... Benjamin Franklin had many great quotes about money and budgets, including:

- "A penny saved is a penny earned."
- "Beware of little expenses; a small leak will sink a great ship."

LLI is a great resource for our community and for our members. If you are interested in helping to maintain this wonderful resource, think about joining the LLI Finance Committee. This committee is charged with developing a budget for every LLI academic year, and then making sure that the various committees of LLI stick to their approved budgeted targets. The budget helps to drive the program and makes sure that every member of LLI gets their bang for their buck (no hunting metaphor intended).

There will be no membership dues increase for the 2018-2019 academic year. While some of our expenses are on the rise, the dues increase enacted last year should carry us through for a few years. That being said, LLI is still a bargain compared to many other programs across the country. Not only do you get a wonderful selection of classes each semester, but you do so at a very reasonable cost. Other LLI programs charge up to \$75 a course (no, that is not a misprint).

If you are interested in helping to keep our budget in line, maintain a cost-conscious program, and enjoy juggling dollars and cents, consider joining the Finance Committee. We meet the 3rd Monday of every month at 8:00 AM at the Village Grille in Allouez. On a personal note, it has been a great pleasure serving as the LLI Treasurer/Finance Committee chair for the past two years.

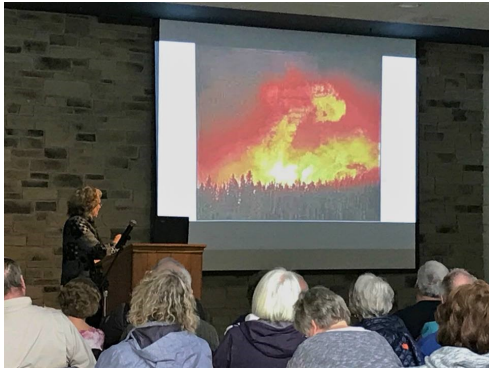


Remember! Our Web page is a great source of LLI information. It has forms, registration information, board minutes, events, and even some class notes. www.uwgb.edu/lli and don't forget to like us on Facebook!

Curriculum Committee by Co-chairs Julie Lindley and Sue Sorenson

Your Curriculum Committee (CC) has been organizing courses for you for 27 years. LLI is a bargain! We have a low membership fee and choice of 400 courses each year, while maintaining a volunteer organization with only minimal paid staff. But we need your help.

We love your suggestions for new courses but naming a specific presenter for suggested courses is more helpful. You could also join the CC and help us by being the contact person for new and repeat presenters, by evaluating courses, by attending monthly planning meetings, by communicating regularly with fellow committee members and making sure



course catalogs get out on schedule. Some basic computer skills and email access are necessary. You would need to have time available during the busy recruiting months of January 1 through mid-April for the Fall semester and July 1 through mid-September for the Spring semester. We are always sorry to have to turn away presenters because of the lack of time and resources to pursue these courses, so new CC members are most welcome.

As a reminder, be sure to use your catalog. Make sure you are going to the right venue and to contact a coordinator if you must miss a session or to drop the course. Check your calendar often so you don't miss any sessions. It is always disappointing to us and the presenter if there are no shows and people waiting to attend the class who could not get in. Starting in the fall, it will be your responsibility to contact a coordinator if you did not get into a class to see if there are openings. Be kind to your fellow LLI members and keep in touch with the coordinator.

To step up and help or just visit a meeting, please contact one of the Curriculum Co-Chairs:

Julie Lindley jlindley02@gmail.com 252 333 7287

Sue Sorenson turtlepets@sbcglobal.net 920 469 3757



Publicity and Promotion Committee by Sherry Moon

Yes, the communications committee has a new name. At the last board meeting the board of directors voted to accept the recommendation of the communications committee that the its name be changed to better reflect its mission. The charge of the committee is to promote LLI to the greater community, to publicize LLI, its events and to keep the members informed. The committee felt that the title publicity and promotion describes exactly what it does. Although the committee has a new name it will continue to share the "best kept secret", Lifelong Learning (LLI), to Northeast Wisconsin.

How does our LLI compare with others?

According to Mike Murphy's research it is one of the best in the country. It offers a wide scope of classes at a great bargain. The main reason is that our LLI is a member led organization run by volunteers. If you would like to read Mike's article check out the LLI website: UWGB.edu/lli



P&P continued

The Publicity and Promotion committee is planning the event: “Introduction to Lifelong Learning” at the Neville Public Museum on **July 25, 2018 from 10:00-12:00.** This is an opportunity for anyone interested to learn about LLI. The program includes an introduction to LLI, two sample classes, registration information and time for questions and answers. Spread the word to your friends, acquaintances and even strangers. Word of mouth is still the best means of advertising LLI.



Beginning on July 1st Bill Zoelle will chair the Publicity and Promotion committee. Thank you Bill. Also thank you to all the members of the P&P committee: Mike Murphy, Ed Smith, Sally Bourbonnais, Mary Cook, Kay Pascoe, Keith Pamperin, Bill Zoelle and Nancy McGrew, ex-officio. You make a great committee!

Board of Directors 2018-2019

Officers

Wes Cavenough, President

Fred Delie, Vice President

Jim Huss, Secretary

Rick Nuetzel, Treasurer

Members at Large

Patti Payette

Roxie Huebscher

Robert Vanden Heuvel

Committee Chairs

Karen Cavenough, Social

Pati Wiegand, Volunteer Development

Bill Zoelle, Communications

Sue Sorenson and Julie Lindley, Curriculum

Rick Nuetzel, Finance

UWGB

Jason Mathwig, Advisor

Susan Pike, LLI Office Administrator

Rikki Ward, Intern

Two Hundred Years —It is Brown County's Birthday

2018 is the 200th anniversary of the founding of Brown County. It is not often that such a mile-stone is celebrated. The Neville Public Museum with the help of the community is doing just that with its dynamic exhibit, “Our Brown County”. The exhibit highlight the county in which we live. 50 artifacts, 50 pictures, 50 photographs and 50 people make up the display. It provides a wonderful trip through time and brings 200 years of history to life. Brown County officially existed before Wisconsin was a state. The exhibit will be at the museum from May 29, 2018– October 27, 2019. This is an excellent opportunity for our members to learn the history of the area. More information can be found on the Neville Museum website: NevillePublicMuseum.org. The Neville Museum is a partner of LLI.

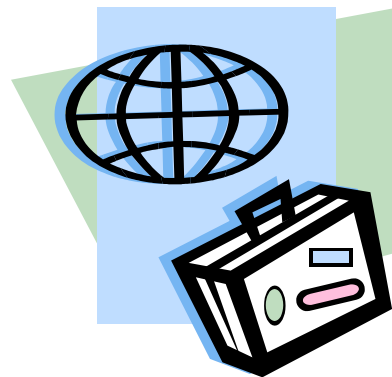


LLI Travel Committee by Ron Niesing, chair

Yes, as Willie Nelson so aptly put it, "We are on the road again"! The travel committee has reviewed over 250 responses to the recent survey of LLI members regarding travel wishes. We asked about your ideas regarding one day trips (our traditional "It's Happening" trips), overnight trips of 1-2 days, and longer trips in the US and overseas. Samoa to Spooner (yes, Spooner, Wisconsin) pretty much covered the array of ideas that came out of the survey.

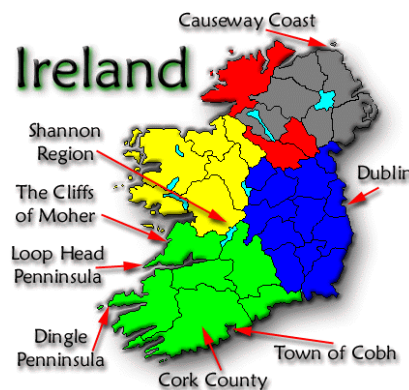
Your LLI travel committee is using these survey results to plan future trips. If you like to travel, if you are looking to go down the highway, making new friends (again, compliments to Willie Nelson), come join us on the travel committee. Think of the memories you can help to create for fellow LLI members as you plan that trip to Madrid, Spain or New Madrid, Missouri. Help to set up a trip to a Brewers game or to visit a historic brewery in New Glarus.

"The world is your oyster" - join the travel committee to explore the adventures and thrills of travel. We meet the 3rd Friday of every month at the Aging and Disability Resource Center at 9:00 AM. Our meetings typically last about one hour. Bon Voyage for your upcoming travels and we will maybe see you at a committee meeting or on one of our planned trips. Have a good summer!



LLI Members "On the Go" by Frank Moon

On September 22, 2018 43 LLI members will head to Ireland. This exciting trip filled-up fast when it was announced in November 2017. The LLI travelers will fly to Dublin and then motor-coach to several cities to experience the beauty of Ireland touring everything from the Irish National Stud Farm to the House of Waterford Crystal. There will probably be a few pub stops in-between. Perhaps some of the travelers will share their experiences by presenting an LLI class next year! Note for the Ireland travelers: a "meet and greet" is in the planning process and date/location will be announced once your travel documents are available.



Well it's never too early to plan for next winter....and that is exactly what some lucky LLI members are doing right now. The next major LLI trip is to the beautiful and warm state of Hawaii in March 2019. LLI travelers will be visiting Oahu, the Big Island of Hawaii and Maui from March 11 to March 21, 2019. What a terrific way to breakup the cold Wisconsin winter! As of June 26th, twenty-nine people have signed up. Laura Hasenjager at Fox World Travel in De Pere says that the trip still has some room for LLI members and guests but it is quickly filling up. In case you missed the Hawaii Trip information meeting held at the Mauthe Center on June 7th you can get more information and/or sign up by contracting Laura at 920-336-1001. Aloha!

UW-GB has been terrific in working with LLI to allow us once again to have the opportunity to travel as a group. I think it is great that we can travel with other LLI members. If you have any questions about LLI's travel policy do not hesitate to contact me, Frank Moon, fsmoon@centurytel.net or 920-866-1555.

Join other LLI Members

Join your fellow LLI members for breakfast, socialization and sharing. On the fourth Wednesday of the month meet LLI members for a **"Dutch Treat Breakfast"** at the Bay Family Restaurant at 8:30. For the last two years members have been gathering to share fun and conversation. Keith Pamperin publicity and promotion committee and long time LLI member, has been coordinating and facilitating this social activity. Attending members have a great time! If you wish to attend respond to Keith Pamperin, 920-494-3390, or kjpamerin@aol.com. Bring your stories, jokes, photos and appetite. This is an informal opportunity for members to socialize and get to know each other. All are welcome. The next breakfast is Wednesday, July 25 2018.



Cofrin Library: LLI members can use the Cofrin Library. Just stop at the desk, show your public library card and the Cofrin library will issue a card for the library. This gives one not only access to the UW—Green Bay campus library, but also to the entire University system through the interlibrary loan connection.

LLI DVD collection LLI has an extensive collection of DVD's that are available to members for their use. Among the collection are many of the Great Courses Classes. These are classes recorded by university professors on a variety of topics. Perhaps you have experienced such a class facilitated by an LLI presenter. To check out these DVD's contact the LLI office. There is a complete list of the DVD's on our website: www.uwgb.edu./lli

Choir

Many of you were in the Christmas Choir that Mary Eisenreich directed and have been wondering if it will continue. The answer is, yes. At the present time Norma Vincent and Eileen Johnson are working on both co-directing and co-accompanying. The group will continue to meet at Beautiful Savior church and we will sing for the Holiday Social. The practices will start in late August. If you sang with the choir before, please send your name and email to me at wcarvenough@new.rr.com. If you know of anyone that would like to join the choir please share this information with them. Norma and Eileen are presently searching for some new songs and reviewing songs from the past for us to sing.



LLI in Action



Lifelong Learning Institute

Division of Continuing Education and Community Engagement

University of Wisconsin-Green Bay

2420 Nicolet Dr.

Green Bay, WI 54311-7001

Contact People for LLI

President:

Wes Cavenough 497-1108

wcavenough@new.rr.com

Vice President:

Fred Delie 227-7770

fddelie@gmail.com

Secretary:

Jim Huss 434-3674

jhuss2@new.rr.com

Treasurer:

Rick Nuetzel 499-5208

Ricknuetzel@aol.com

Publicity and Promotions:

Bill Zoelle 662-0842

bzoelle1@gmail.com

Curriculum:

Sue Sorenson 469-3757

turtlepets@sbcglobal.net

Julle Lindley 252-333-7287

jlindley02@gmail.com

Social:

Karen Carvenough

karencar@new.rr.com

Volunteer Development:

Pati Wiegand 429-9868

Pati_927@yahoo.com

Facebook:

Ed Smith 494-5944

edsmith000@sbcglobal.net

Newsletter:

Sherry Moon 866-1555

smmoon@centurytel.net

LLI Office: 465-2356

Susan Pike

pikes@uwgb.edu

lli@uwgb.edu

LLI UWGB Advisor:

Jason Mathwig

mathwigj@uwgb.edu

Website:

<http://www.uwgb.edu/lli>