



President's Message by Nancy McGrew

Welcome to our new members! I hope that you enjoy LLI as much as the returning members do. Fall is evident as can be seen by the days getting shorter, the leaves turning colors, football in full swing, and LLI classes starting.

At this time our Fall Kick-Off will be behind us. I want to thank the Social Committee for all their planning to make that event successful. We are always surprised with the beautiful center pieces they create. Those present had the opportunity to meet the UWGB Chancellor Gary Miller and his wife, Georgia, and hear his message. He shared with us that this fall shows the first increase in enrollment since 2011. UWGB is working to meet the needs of manufacturing with a future College of Engineering and Technology in cooperation with NWT. UWGB wants to remain relevant with an online curriculum that has more enrollment than UW-Eau Claire and UW-LaCrosse. He mentioned that in the next budget money was added to do renovations in the Cofrin Library and the Mary Ann Cofrin Hall. A lot of exciting things for UWGB.



With Lifelong Learning in full gear, help is needed throughout the organization as this is a peer-led program. We need your help to make it a continued success. The classes and events do not just happen. It takes participation by many people. It is a chance to meet new people, make new friends and use your abilities, talents and skills. Another organization says "Many hands make light work". All of the committees' needs for volunteer assistance can be found later in this newsletter. Please consider giving one of them a try.

Thank you to everyone who made this fall semester one of our best. Volunteers make LLI happen. Over 200 classes were offered by over 180 presenters, coordinated by over 80 members at 40 different venues to 1024 students.

Some classes had more than one presenter. Some presenters offered more than one course. Likewise some coordinators hosted more than one class. And members took from one to over thirty classes.

This statistic, of course, does not include all the behind scenes efforts that are vital to the LLI. Committees: office help, JoAnn Feeney and our student intern, Alycia Winters, are all part of this success. Pat yourselves on the back and celebrate a job well done!



Up-Coming Events

- **November 10: 8:30 LLI Dutch Treat Social Breakfast. Bay Family Restaurant**
- **December 7: 11:00 Holiday Social Riverside Ballroom**
- **November 18-December 11: Registration Lottery Window**

Inside this issue		
Spring Registration	P.	2
Committee Reports	P	2-3
Survey Results	P.	4
We are LLI	P.	5—6
Social Breakfast	P.	6
Holiday Social	P.	7

Spring Semester Information:

The Spring Catalog is in process. Over 160 courses will be offered in the catalog. It will be in homes around November 15, 2016. Lottery Registration will begin on November 18, 2016 and close at midnight on December 11, 2016. Confirmation letters will be mailed December 18, 2016. Open registration is on going. Classes begin in January, 2017.

Curriculum Committee by Bob Cook

The Spring 2017 catalog has been completed. It is at the printer. Thought that you might like a little taste of what is to come. How would you like to sail the world with Ferdinand Magellan, find out about Albert Einstein's "Miracle Year", or catch a glimpse of how women were an integral part of the Allied victory in World War II? All of these experiences along with classes in water color, painting, music, history, health and fitness, and many others will be available to you this Spring. If you are happy with the course offerings for Spring, please thank the hard-working members of the Curriculum Committee whose efforts secured those classes

Finance Committee by Ron Neising

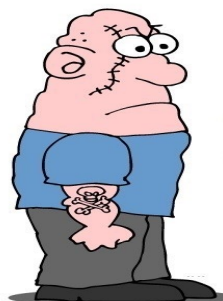
Sudoku? Monopoly? Solving math word problems? If you like working with numbers, the Finance Committee of LLI is for you! Are you responsible for a budget – at home, at work, as a volunteer at an organization? Then the Finance Committee at LLI is the place to be!

The Finance Committee is responsible for tracking the budget of LLI. We meet monthly to review income, expenditures, and ensure that LLI remains on the black side of the ledger sheet. We are responsible for ensuring that all the various programs under the LLI umbrella stay within budget – curriculum, communications, social, It's Happening, and more! Committee members may participate in special ad hoc committees, such as setting up contracts for venues where LLI classes are held or tracking the payment of fees associated with various classes. In the early part of the calendar year, members of the Finance Committee sit down with all of the other standing committees of LLI to determine the budget for the upcoming year.

Along with the LLI Board of Directors, the Finance Committee strives to ensure that the membership of LLI gets a good bang for the buck. We want to ensure that fees remain reasonable and in line with the costs of the program. The Committee makes routine recommendations to the Board that may impact on every member of LLI.

So if you like crunching numbers, if you have talents in the world of finance, accounting or bookkeeping, join us on the Finance Committee. We meet the third Monday of every month at 8:00 AM at the Village Grille in Allouez. Give us a whirl on the "Wheel of Fortune" and learn a little more about the inner workings of LLI. Finance – the name of the game!!!

Can't make a class? Please remember to notify the coordinator. This allows the coordinator to notify someone on the wait list.



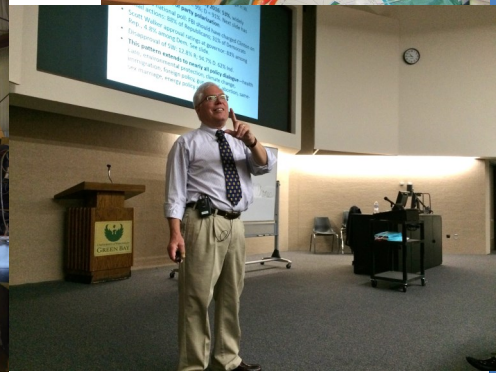
**L.L.I.
TRUANT
OFFICER**

Volunteer Development Committee by Jan Rickert

How long have you been a member of Lifelong Learning? Have you enjoyed the variety of courses offered each semester? There are many members that search out these courses and recruit the presenters. There are other members that coordinate these courses, and others that put together our social events, advertise/market Lifelong Learning in the community and keep track of our finances. In essence, Lifelong Learning has done a lot for you. Now it's time to ask yourself, what can I do for Lifelong Learning? Well, since it's an all-volunteer organization, you could volunteer! A good place to start is in the Office. There are morning and afternoon shifts, Monday-Thursday (Friday AM based on need only) at the front desk. The work isn't hard, greeting those that come to the office, answering the phone, maybe some easy filing, or stuffing envelopes. Computer work is NOT a requirement. However, the State University System requires all staff, be they paid or volunteer to submit to a background check, due to the possibility of handling any funds due the University. So give Sue Jonet a call at 920-536-0193 or email her at nanasue2@msn.com. She'll be happy to train you, and you can add your time in the office as another enjoyable part of Lifelong Learning.



LLI Fall Activities



Holiday Social

Included in this issue —The invitation to the Holiday Social, December 7, 2016 at 11:00. See page 7 for registration!

Communications Committee by Sherry Moon

Thank you to everyone who responded to the communication committee survey. We had a response rate of approximately 29% which statistically is great. It is important that we share the results with you as we are using those results to guide the committee's future planning. Your comments were very affirming. Thank you. Several respondents offered ideas that we are acting upon. Here, in general, are the results:

How often do you read the newsletter?

64% said always, 23% said often, 10% said sometimes-- 97% of the respondents read the newsletter.

On a scale of 1(very important) to five (not important), how important is the LLI newsletter in keeping you informed....

30% said very important, 34% said important and 27% said useful--90% of the respondents find the newsletter informative.

The LLI newsletter typically includes photos of recent LLI events and articles featuring photos, etc., how interested are you in viewing these photos and reading these features articles?

40% said very interested, 39% said somewhat interested, 20% said occasionally interested--99% of the respondents are interested in the newsletter's material.

Below are five options that the Communications Committee is considering for keeping LLI members informed.... Please express your personal preference....

Option (Answer)	Rank 1	Rank 2	Rank 3	Rank 4	Rank 5
On-line newsletter 4 times	47	43	27	63	28
On-line newsletter 4 times with regular updates etc.	61	62	45	31	9
On-line Twice with brief monthly updates	40	58	85	18	7
On line Twice with occasional Updates	44	42	33	81	8
No newsletter, just updates	16	3	18	15	156

We used a weighted average to analyze this data and determined the respondents clearly want a newsletter, however equally important to them is monthly updates. What was less clear was the frequency of the newsletter.

From the results of the survey the communications committee decided to submit updates on a monthly basis. **The committee also voted to eliminate the January newsletter. This year the newsletter will be published three times, summer, fall and spring.**

The open comments were very affirming and useful to us. One member suggested that LLI contact data be put on a refrigerator magnet. We are doing this. Another thought a static decal would be nice for the car or window. We are doing this as well. **Members are proud of this organization and are anxious to share it with others. Hopefully, magnets and decals will help our members do this. Nonetheless the most effective means of growing our organization is through person to person interaction. LLI is a great organization and we want everyone to know it!**

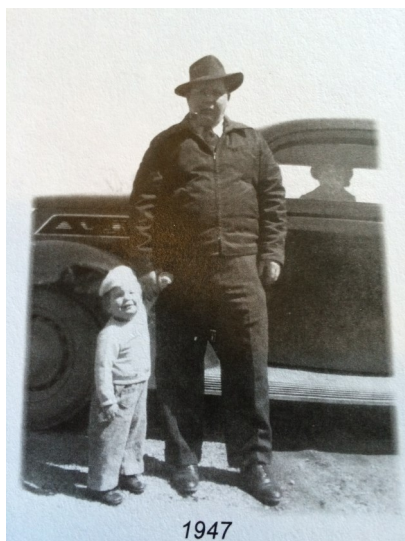
Keith Pamperin

LLI Communications Committee, Past LLI Board Member, Housing Administrator, City of Green Bay and Brown County, Community volunteer, Advocate for the Disabled, Lover of nature, and avid outdoors man

Life Pre-LLI:

Keith Arnold Pamperin considers himself “a very lucky” man. He grew up on a farm in rural Duck Creek, one of seven children. He was the middle child, the first son with five sisters and one brother. Surviving as a middle child “took tenacity”. He remembers Duck Creek as a place where “we had a tree house in every woods”. He drove tractor at the age of eight. He also remembers going one whole summer without wearing shoes. From a very young age Keith loved being outdoors.

Keith graduated from East High school in 1963. As Bayport and Southwest did not exist and West was full he was bused from Howard (Duck Creek) to East High. Following graduation he enrolled in NEW Tech school studying to be an electrician.



With the Vietnam War apprenticeships were unavailable so he decided to pursue an associate’s degree at Milwaukee Institute of Technology. He loved being away from home and loved the activity that was part of Milwaukee. The summer of 1967 brought a sudden change to all his plans and indeed made Keith a “very lucky” man. Keith was riding his Vespa, feeling very good that he had just been elected president of Student Government, when he was hit by a Mercury Cougar. He was in a coma for 4.5 days and hospitalized for over 8 months. His body was a total mess having suffered over 18 compound fractures.

The accident changed Keith’s life goals and also brought Judy into his life. Judy visited him every day he was in the hospital. She supported him during his long recovery and has continued to be part of his life. He and Judy celebrated 45 years of marriage this October. Keith came back to Green Bay to continue his recovery. He enrolled in UWGB as a junior, hobbling on crutches and taking 6 credits his first semester. The following semester he fully immersed himself in college life; he was elected vice president of student government. Graduating in 1970 with a

degree in Urban Planning and Analysis, he interviewed for a job on Friday with the Green Bay-Brown County Planning Commission, was hired and sent to Madison for a seminar on planning the following Monday. He continued to work in urban planning and housing for the city for 38 years, retiring in 2009. Keith has two adult children and three of the “best grandchildren” in the world.

Life beyond LLI:

Keith is very active in the community. He stated “I retired from work but not from life”. He is active in the UWGB Alumni Association which he helped to found, and he received UW-Green Bay’s Distinguished Alumni award in 1994, and in 2010 had a UWGB residence hall named after him. He is an advocate for those with disabilities. He follows UW—Green Bay Phoenix and the Green Bay Packers. He is a member of the “Sitting Ducks” a team of disabled trap shooters. He



We are LLI continued

teaches hunter education and provides support to hunters with disabilities. He is director of the non-profit Challenge the Outdoors, Inc., an organization dedicated to serving the recreational needs and desires of the physically challenged sport-persons. "I am rejuvenated when I am outside. I love nature."

What does LLI mean to me:

"LLI means an opportunity to meet new friends and to continue my passion for learning. I encourage others to take part in this wonderful opportunity. "



Most people don't know but:

I have been a soccer coach. I started the Clean Bay Backers program. In 2007 my son, daughter and I hiked to Ryan Island in the middle of Lake Siskiwit in the middle of Isle Royale, in the middle of Lake Superior, just to get to say," I was on the largest Island in the largest lake, on the largest island in the largest lake in North America." "Quite a challenge for a guy that can barely walk!" "I am a lucky man."

You are Invited : Social Opportunity

We thought we would try an opportunity to have UWGB LLI members gather for a Dutch treat, social breakfast to get together, laugh, get to know one another better, discuss community issues and have fun.

Our first Social Breakfast will be Thursday, November 10th, at 8:30 am at the Bay Family Restaurant, corner of Military and Ninth Streets, Green Bay. They have pretty good food and I have reserved a group table for us. If this is successful we would try to continue on a monthly basis. Dates and time can be discussed to meet the groups needs.

Please call me or e-mail if you will be attending so I can have adequate seating.

Bring your (appropriate) jokes, stories and photos. Lets get to know one another!

Keith A. Pamperin, 920-494-3990

kjpamperin@aol.com

Remember: Our Web page is a great source for LLI information and like us on Facebook

Confrin Library at UWGB LLI members can use the Confrin library. Just stop at the desk , show your public library card and the Confrin library will issue you a card for the Confrin Library. This gives one not only access to the UWGB campus library but also to the entire University library system through the inter library loan connection.

LLI HOLIDAY SOCIAL



Please join us on



Wednesday, December 7, 2016

Social: Doors first open @ 11 a.m.

Noon: Luncheon (Chicken cordon bleu on bed of rice, vegetable, salad, desserts)

Riverside Ballroom (1560 Main Street, Green Bay)

Open to LIR members and *one* non-member (information required)

RSVP by Friday, November 25, 2016

Send a check for \$15/person (payable to UW-Green Bay)

***Mail to:* Lifelong Learning Institute at UWGB, IS 1040**

2420 Nicolet Drive, Green Bay, WI 54311-7001

Please No Walk-ins



Member Name: _____

Member Phone: _____

Member Email: _____

Circle: gluten free vegetarian

Guest Name: _____

Guest Address: _____

Guest Email: _____

Circle: gluten free vegetarian

Lifelong Learning Institute 2471
Division of Outreach and Extension
University of Wisconsin-Green Bay
2420 Nicolet Dr.
Green Bay, WI 54311-7001

Nonprofit Org.
U.S. Postage
PAID
Green Bay, WI
Permit No. 66

CONTACT INFORMATION FOR LLI

President:

Nancy McGrew 983-0859
tnnmcgrew@gmail.com

Vice President:

Tom Chase 819-6755
tpcgb@aol.com

Secretary:

Jan Hess 468-4871
hessjan2011@yahoo.com

Treasurer:

Ron Niesing 339-0714
Jjries96@aol.com

Communications:

Sherry Moon 866-1555
smmoon@centurytel.net

Curriculum:

Bob Cook 321-0379
mjcook42@att.net

Social:

Arlene Molzahn 499-7920
abmolzahn@new.rr.com

Newsletter Editor:

Sherry Moon 866-1555
smmoon@centurytel.net

Website Bulletin Board:

Ed Smith 494-5944
edsmith000@sbcglobal.net

LIR Office:

Jo Ann Feeney 465-2356
lli@uwgb.edu

LIR UWGB Advisor:

Rebecca Sievers 465-2267
sieversr@uwgb.edu

Website:

<http://www.uwgb.edu/lli>