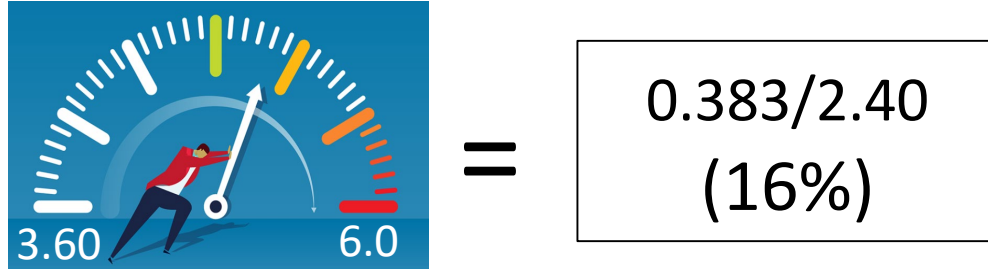


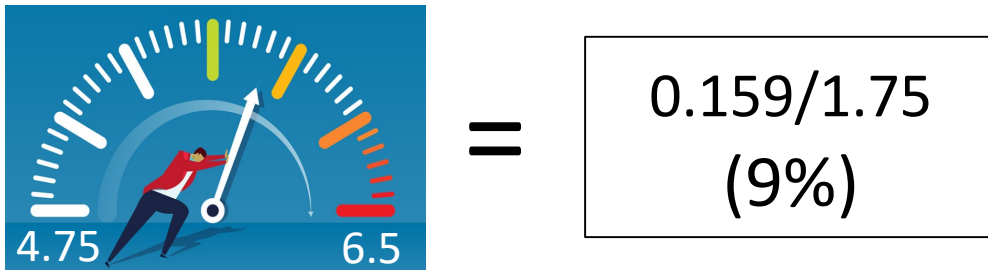
Project: Pt. Sable

Rank: 1 of 18

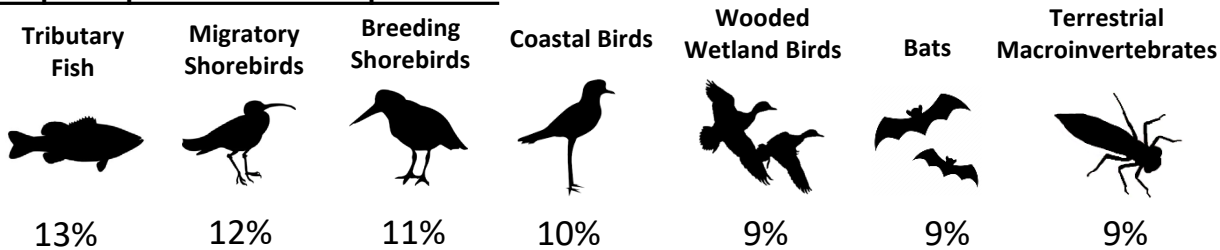
Progress Towards Loss of F&W Habitats BUI Target



Progress Towards Loss of F&W Populations BUI Target

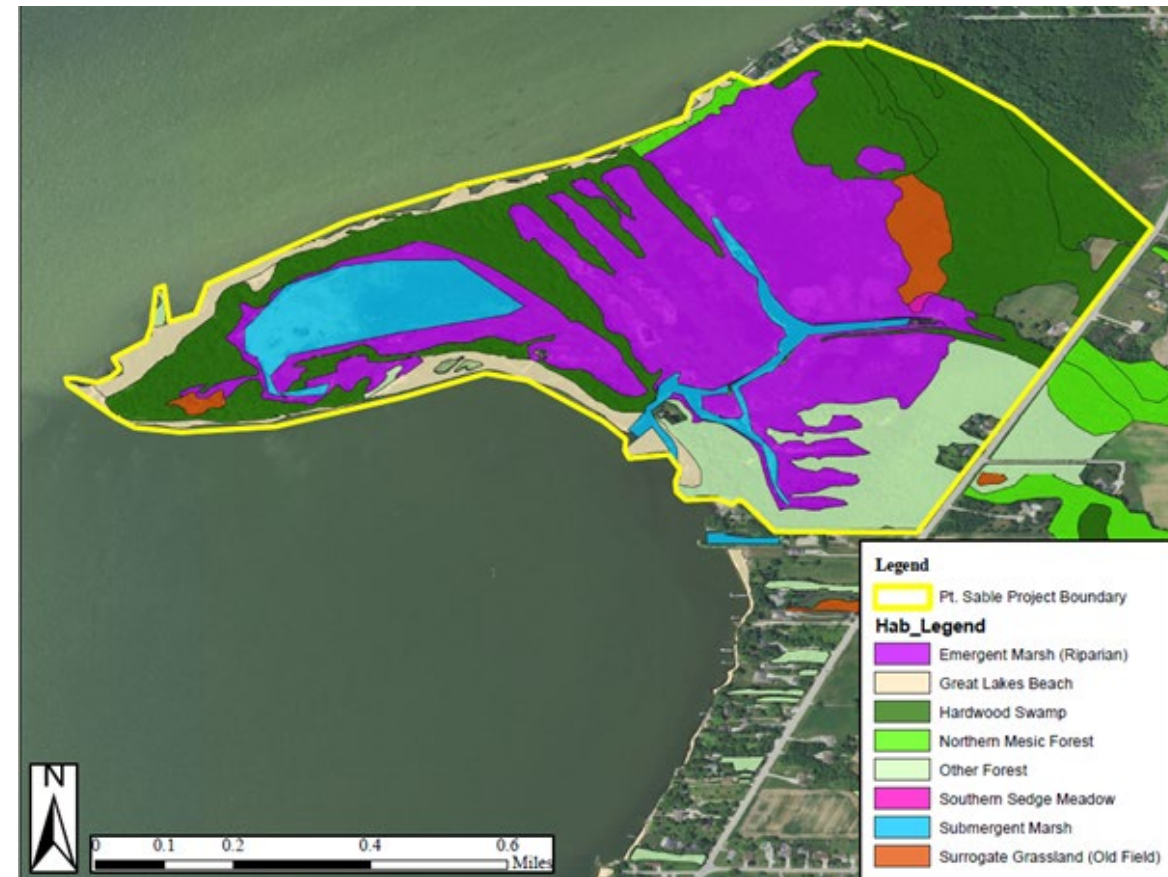


Top Populations Impacted



Other Factors

Project Cost	Feasibility	Co-benefits
6.2/10	7.6/10	7.3/10



Habitat Project Elements

- 2.4km Great Lakes Beach improved
- 35 acres Wet Meadow added
- 23 acres Submergent Marsh improved
- 60 acres Riparian Emergent Marsh improved
- 0.5 DCA unit for Tributary Open Water
- 85 acres Hardwood Swamp improved
- 1.7 acres Northern Mesic Forest improved
- 28 acres Other Forest improved
- 6 acres Old Field improved

Project: Peters Marsh / Fort Howard

Rank: 2 of 18

Progress Towards Loss of F&W Habitats BUI Target



=

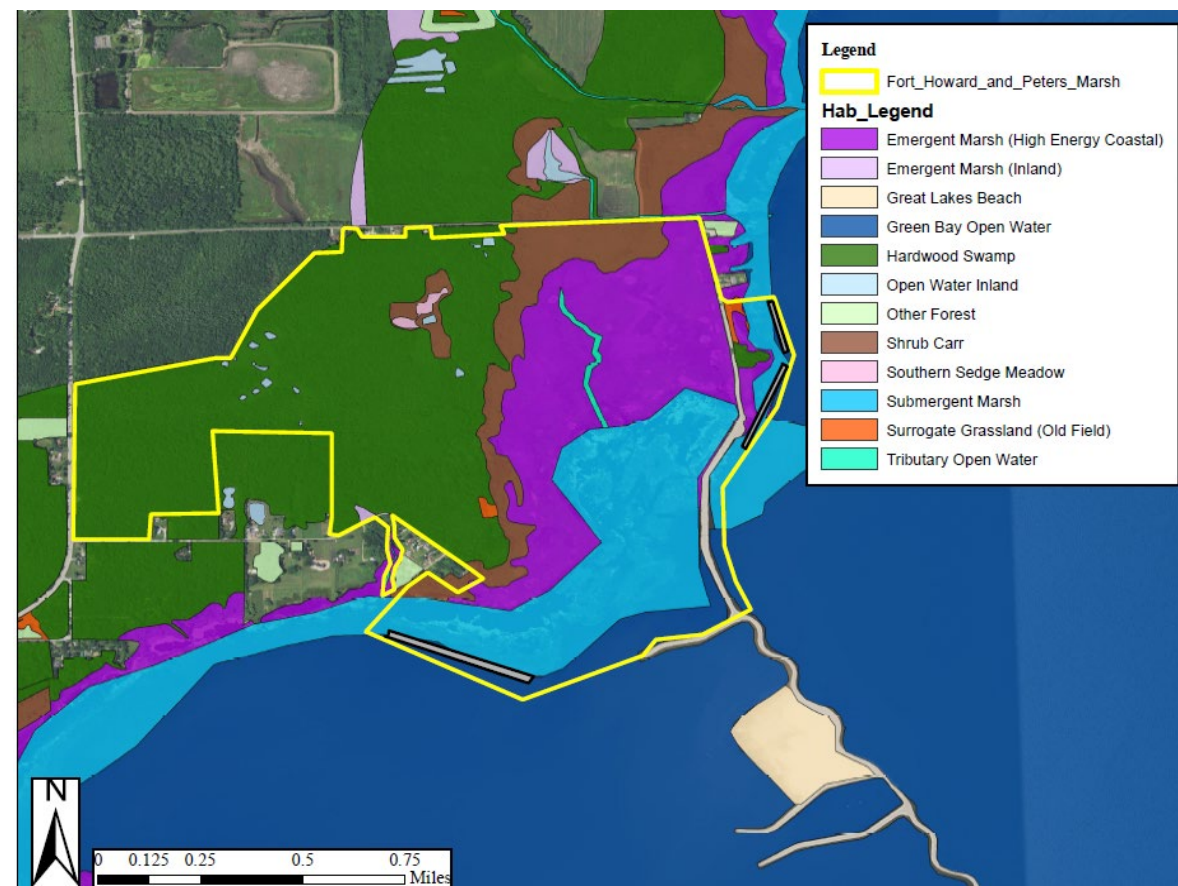
$$\frac{0.384}{2.40} \\ (16\%)$$

Progress Towards Loss of F&W Populations BUI Target

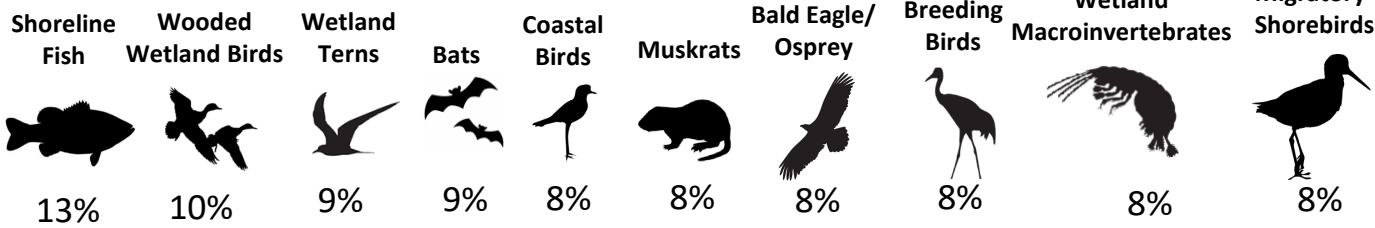


=

$$\frac{0.159}{1.75} \\ (9\%)$$



Top Populations Impacted



Other Factors

Project Cost	Feasibility	Co-benefits
5.8/10	7.4/10	7.2/10

Habitat Project Elements

- 0.5 km added to Great Lakes Beach
- 40 acres Wet Meadow added
- 127 acres Coastal Emergent Marsh improved
- 50 acres Submergent Marsh improved
- 0.5 DCA units for Green Bay Open Water
- 0.5 DCA units for Tributary Open Water
- 48 acres Shrub Carr improved
- 175 acres Hardwood Swamp improved
- 0.5 acres Inland Emergent Marsh improved
- 2 acres Inland Open Water improved

Project: Duck Creek Delta

Rank: 3 of 18

Progress Towards Loss of F&W Habitats BUI Target



=

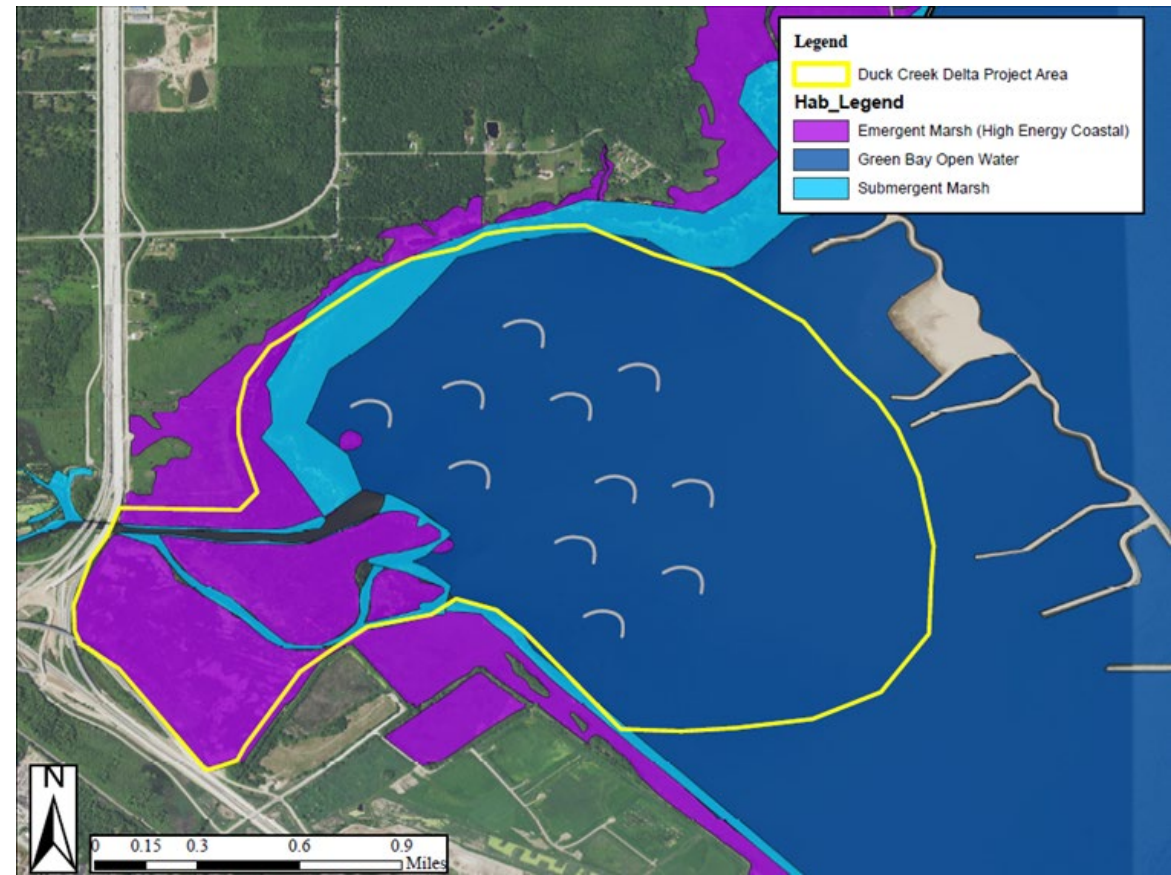
0.336/2.40
(14%)

Progress Towards Loss of F&W Populations BUI Target



=

0.120/1.75
(7%)



Top Populations Impacted

Shoreline Fish



18%

Wetland Terns



11%

Muskrat



9%

Marsh Breeding Birds



9%

Wetland
Macroinvertebrates



9%

Other Factors

Project Cost

8.8/10

Feasibility

6.8/10

Co-benefits

8.5/10

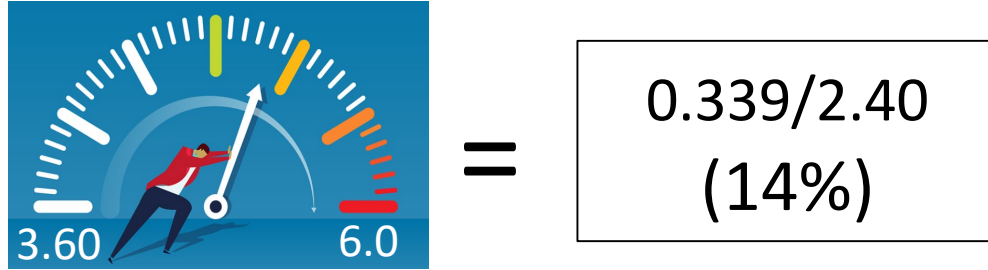
Habitat Project Elements

- 250 acres Coastal Emergent Marsh added
- 250 acres Submergent Marsh added
- 1 DCA unit for GB Open Water – fish

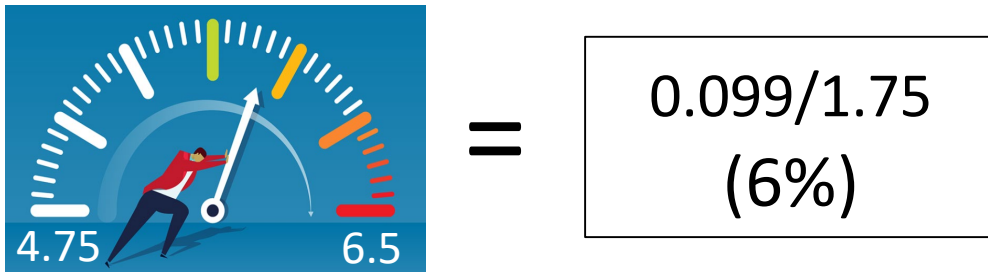
Project: Bay Beach Wildlife Sanctuary

Rank: 4 of 18

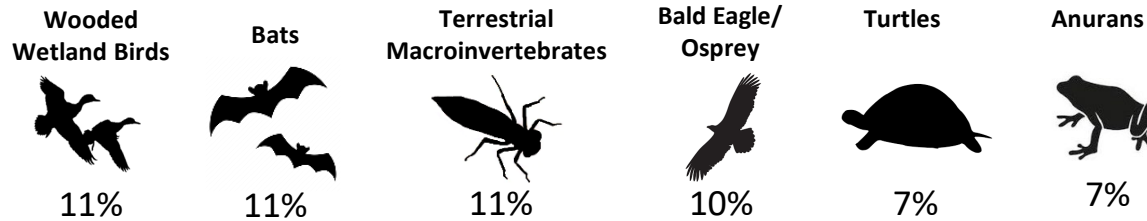
Progress Towards Loss of F&W Habitats BUI Target



Progress Towards Loss of F&W Populations BUI Target



Top Populations Impacted



Other Factors

Project Cost	Feasibility	Co-benefits
5.1/10	7.4/10	7.4/10

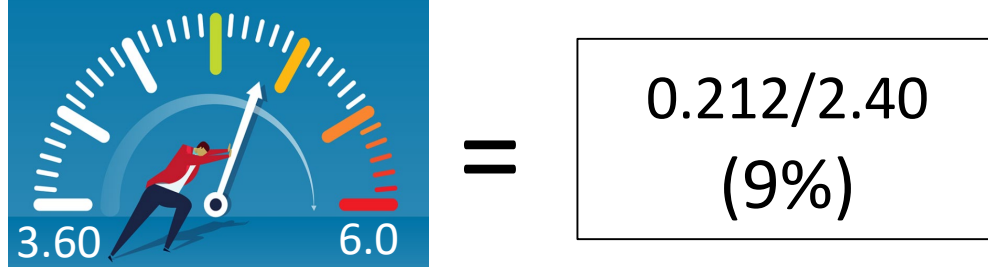
Habitat Project Elements

- 20 acres Wet Meadow added
- 364 acres Hardwood Swamp improved
- 30 acres Inland Emergent Marsh improved
- 20 acres Inland Open Water improved
- 26 acres Other Forest improved
- 20 acres Restored Grassland added, 0.5 acres improved

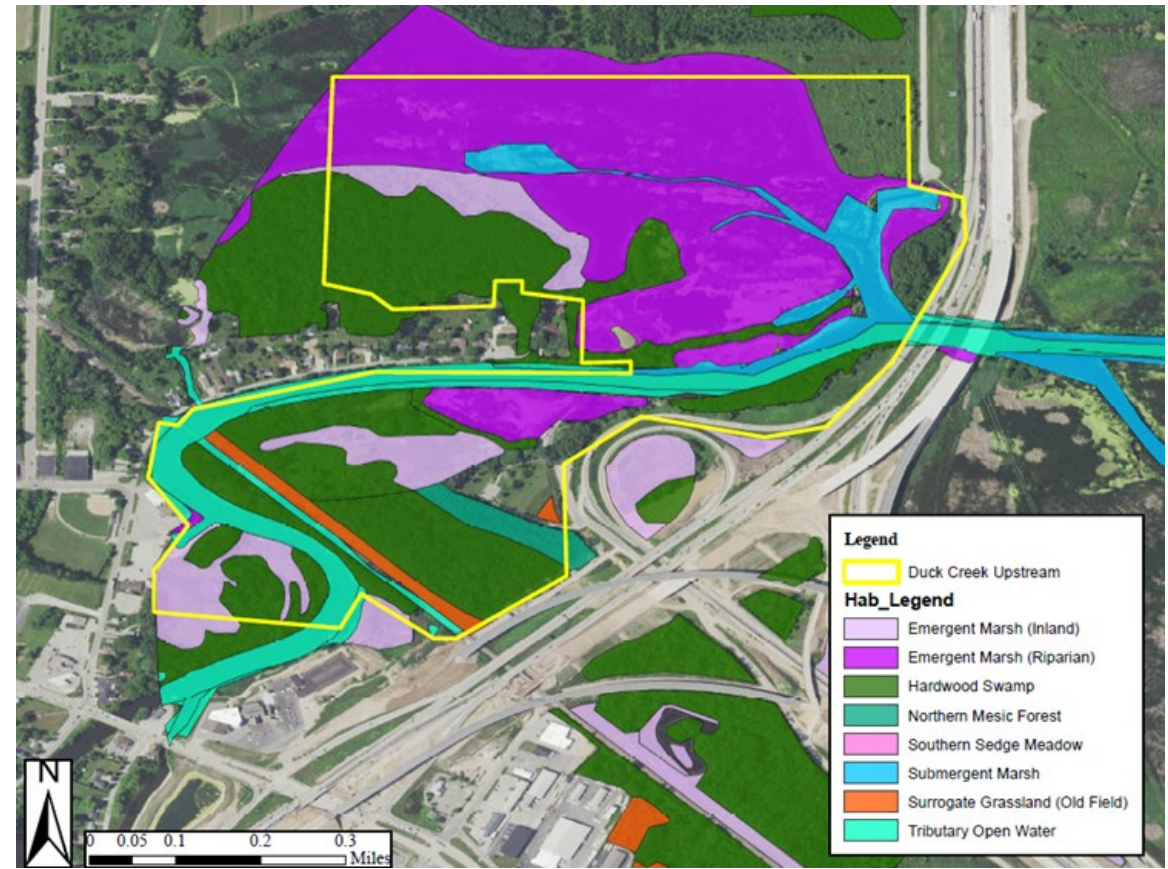
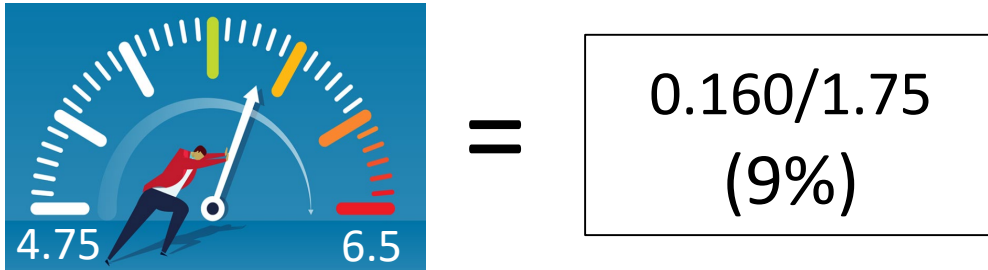
Project: Duck Creek / Weitor Wharf

Rank: 5 of 18

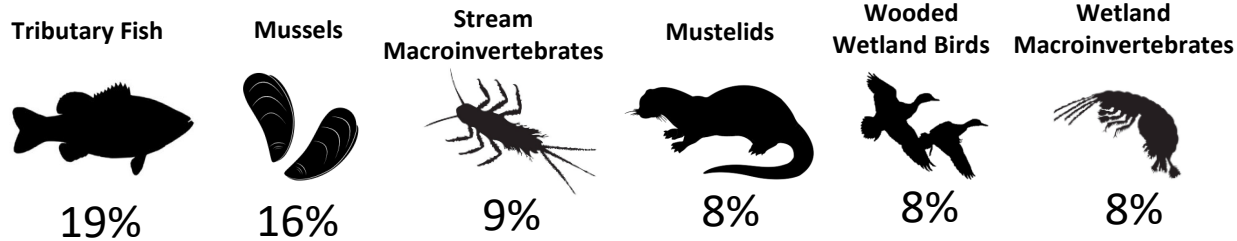
Progress Towards Loss of F&W Habitats BUI Target



Progress Towards Loss of F&W Populations BUI Target



Top Populations Impacted



Other Factors

Project Cost	Feasibility	Co-benefits
6.7/10	7.2/10	7.3/10

Habitat Project Elements

- 10 acres Wet Meadow added
- 70 acres Riparian Emergent Marsh improved
- 2 DCA units for Tributary Open Water – one fish; one mussel
- 35 acres Hardwood Swamp improved
- 1.15 acres Northern Mesic Forest improved
- 2.75 acres Old Field improved

Project: Longtail Point

Rank: 6 of 18

Progress Towards Loss of F&W Habitats BUI Target



=

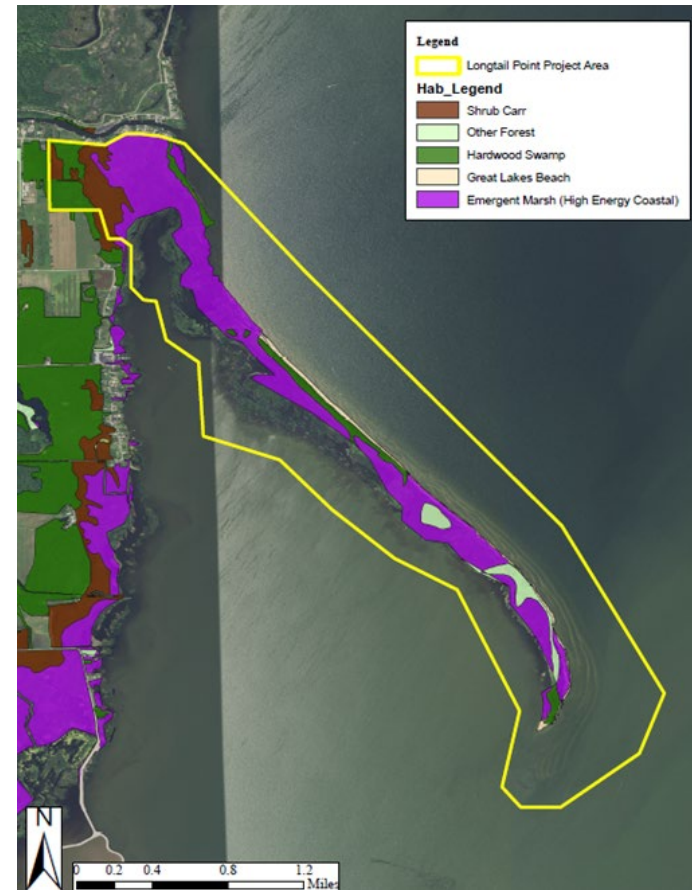
0.310/2.40
(13%)

Progress Towards Loss of F&W Populations BUI Target



=

0.109/1.75
(6%)



Top Populations Impacted

Breeding Shorebirds



13%

Bald Eagle/Osprey



9%

Migratory Shorebird



9%

Wetland Terns



8%

Colonial Waterbirds



8%

Habitat Project Elements

- 5.7km Great Lakes Beach improved
- 116 acres Coastal Emergent Marsh improved
- 41 acres Shrub Carr improved
- 16 acres Hardwood Swamp improved
- 20 acres Other Forest improved

Other Factors

Project Cost

5.7/10

Feasibility

6.4/10

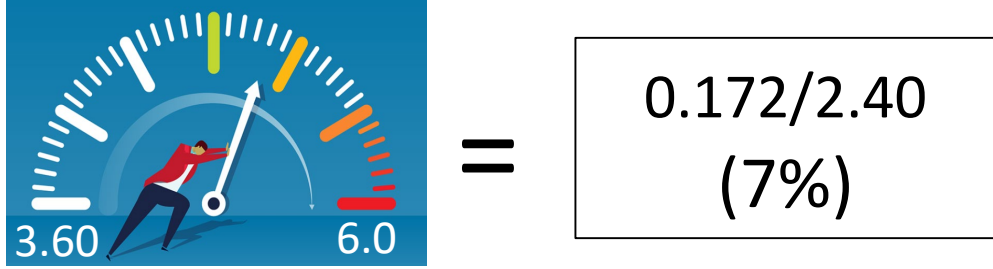
Co-benefits

6.6/10

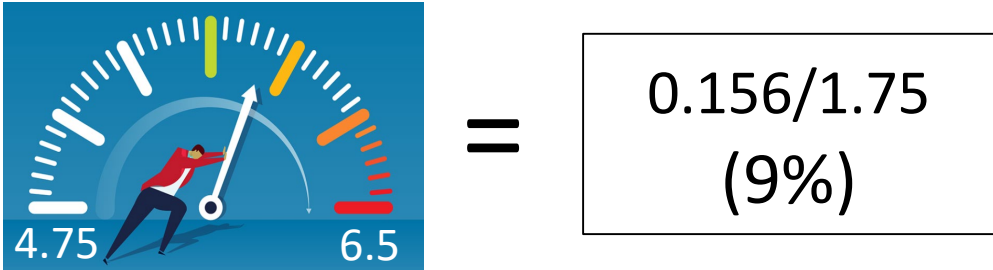
Project: De Pere Dam

Rank: 7 of 18

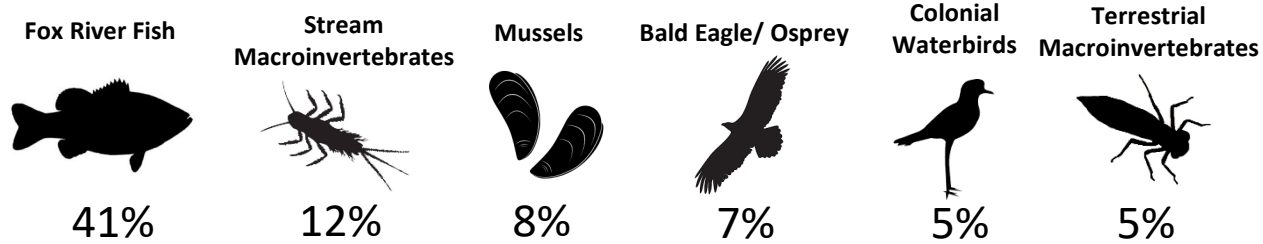
Progress Towards Loss of F&W Habitats BUI Target



Progress Towards Loss of F&W Populations BUI Target

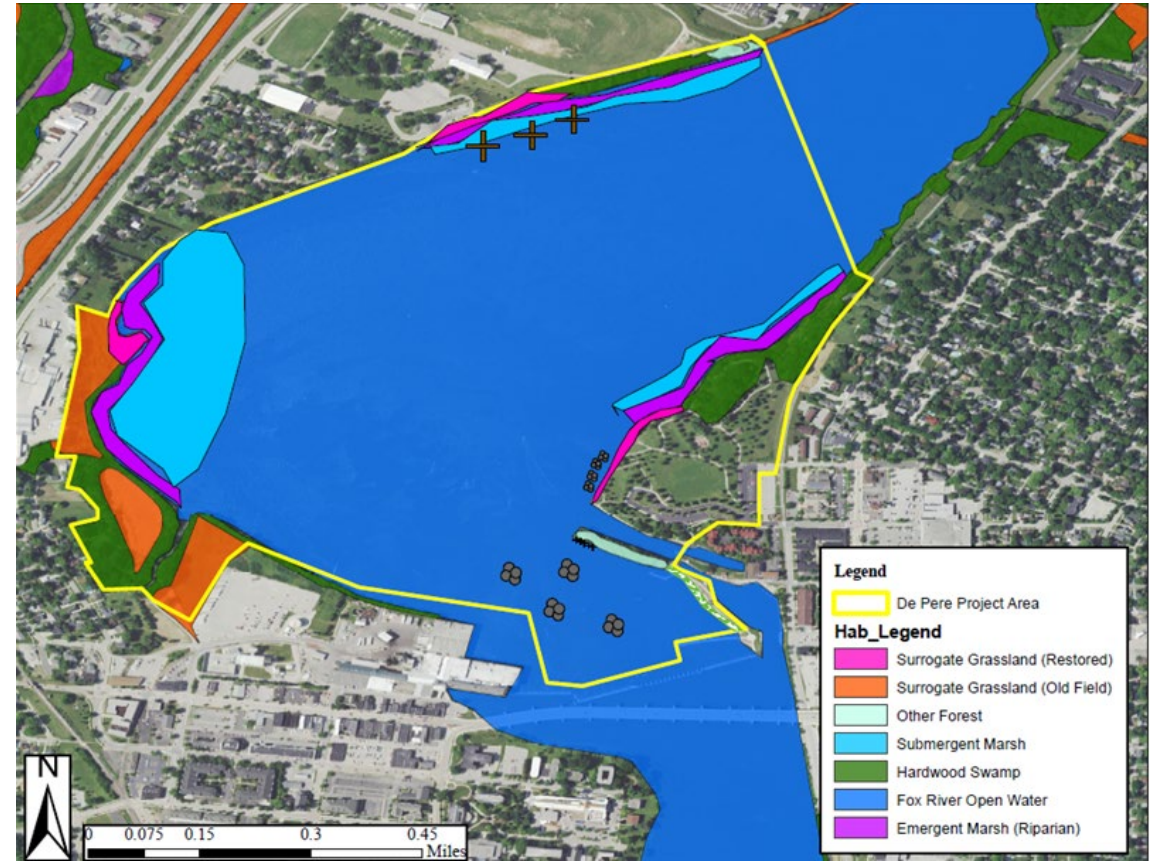


Top 5 Populations Impacted



Other Factors

Project Cost	Feasibility	Co-benefits
7.8/10	6.8/10	7.3/10



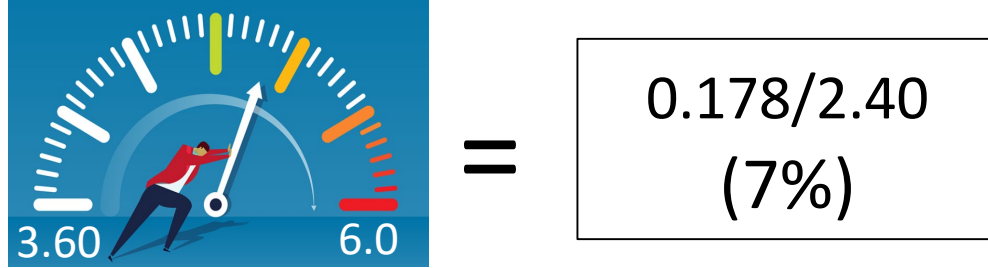
Habitat Project Elements

- 13 acres Submergent Marsh added
- 18 acres Riparian Marsh added
- 3 DCA units for Fox River Open Water – 2.5 fish; 0.5 mussels
- 15 acres Hardwood Swamp improved
- 1.25 acres Other Forest improved
- 10.5 acres Old Field improved
- 1 acre Restored Grassland added

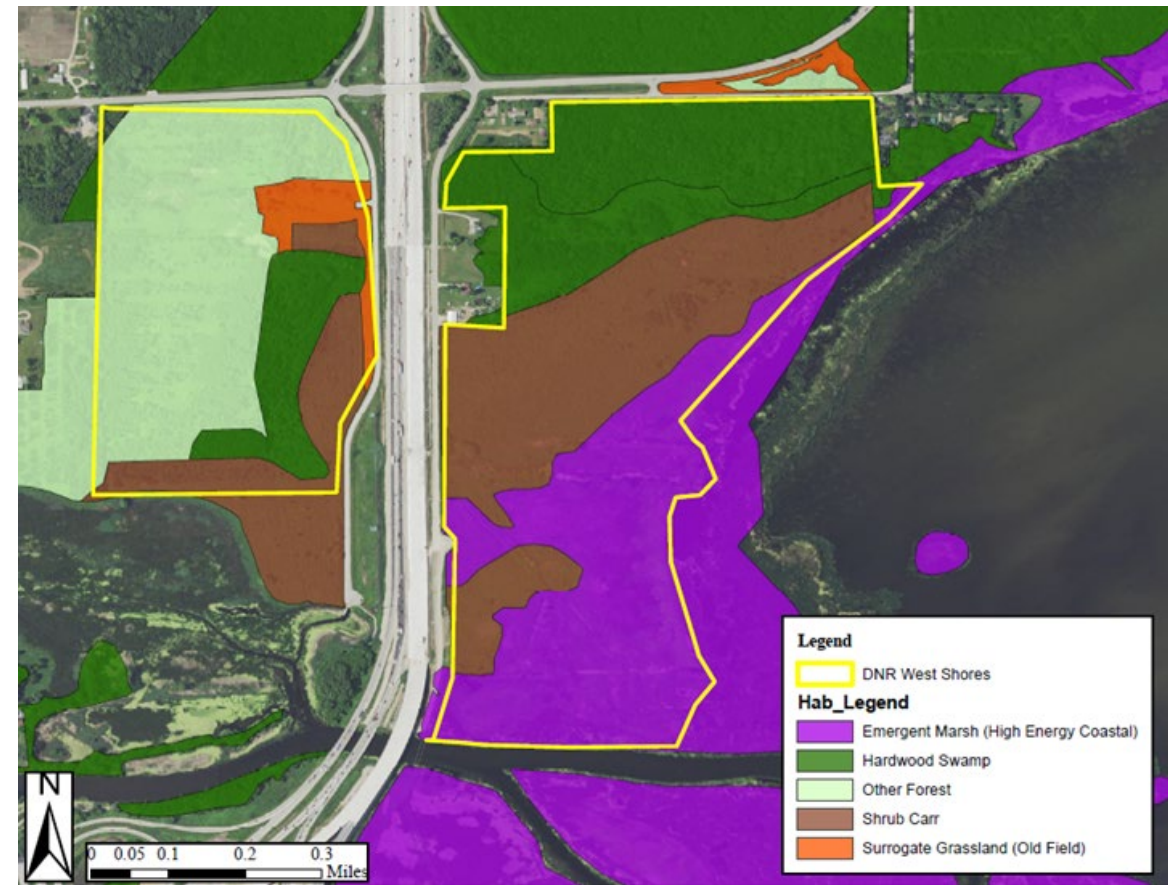
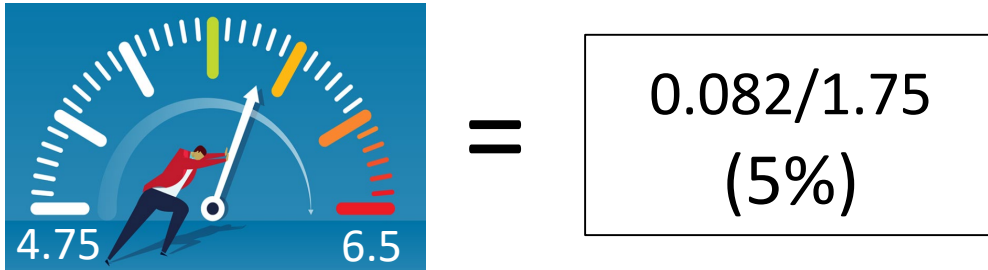
Project: DNR West Shore

Rank: 8 of 18

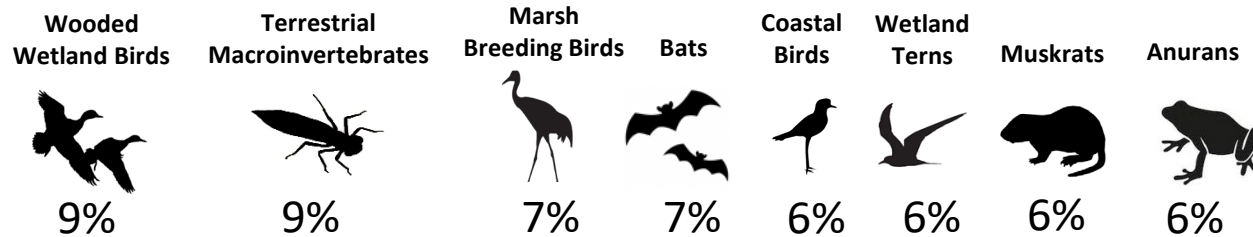
Progress Towards Loss of F&W Habitats BUI Target



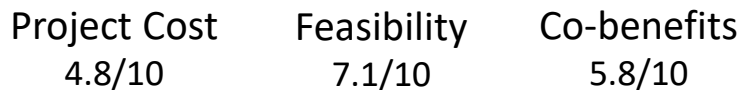
Progress Towards Loss of F&W Populations BUI Target



Top Populations Impacted



Other Factors



Habitats Improved/Added

- 40 acres Wet Meadow added
- 64 acres Shrub Carr improved
- 17 acres Hardwood Swamp improved
- 50 acres Other Forest Improved
- 5 acres Old Field improved

Project: Renard Island

Rank: 9 of 18

Progress Towards Loss of F&W Habitats BUI Target



=

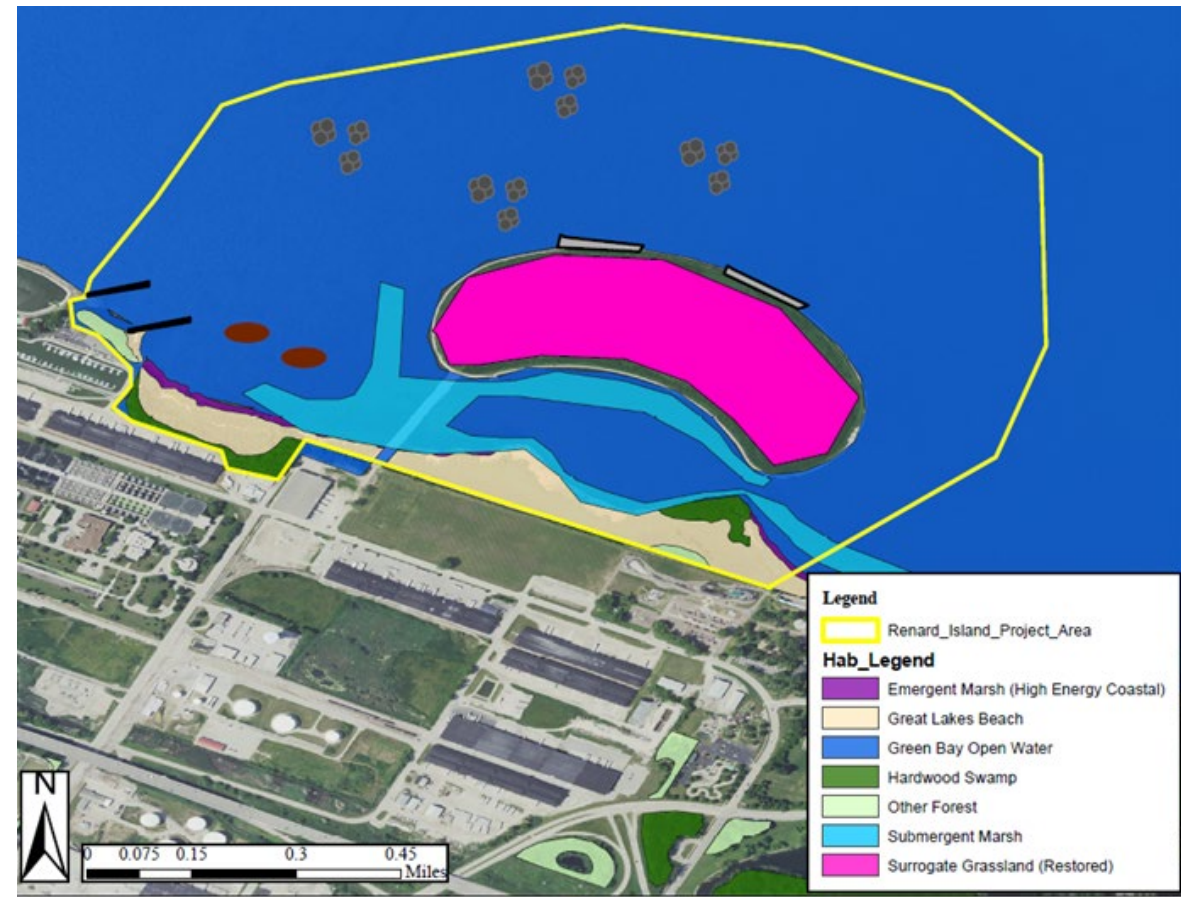
0.153/2.40
(6%)

Progress Towards Loss of F&W Populations BUI Target



=

0.118/1.75
(7%)



Top Populations Impacted

Mussels



16%

Shoreline Fish



15%

Migratory Shorebirds



7%

Terrestrial Macroinvertebrates



6%

Breeding Shorebirds



5%

Other Factors

Project Cost

6.5/10

Feasibility

6.6/10

Co-benefits

6.4/10

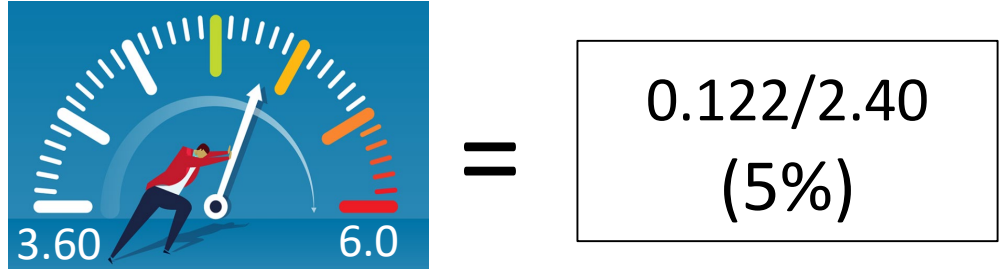
Habitat Project Elements

- 1km Great Lakes Beach improved
- 1 acre Coastal Emergent Marsh improved
- 10 acres Submergent Marsh improved
- 1.75 DCA units for Green Bay Open Water – 0.75 fish; 1 mussel
- 4 acres Hardwood Swamp improved
- 1.5 acres Other Forest improved
- 10 acres Restored Grassland added

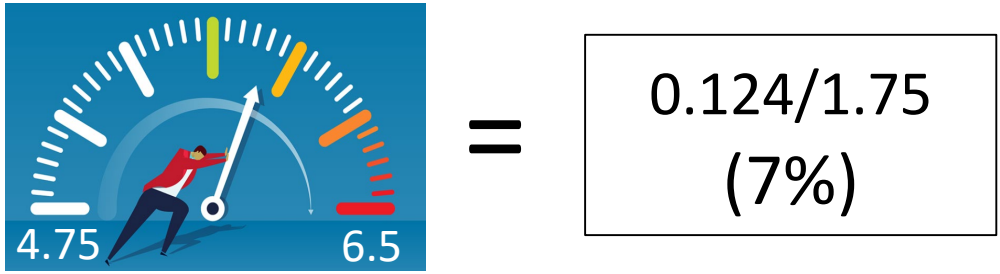
Project: Ashwaubenon Creek

Rank: 10 of 18

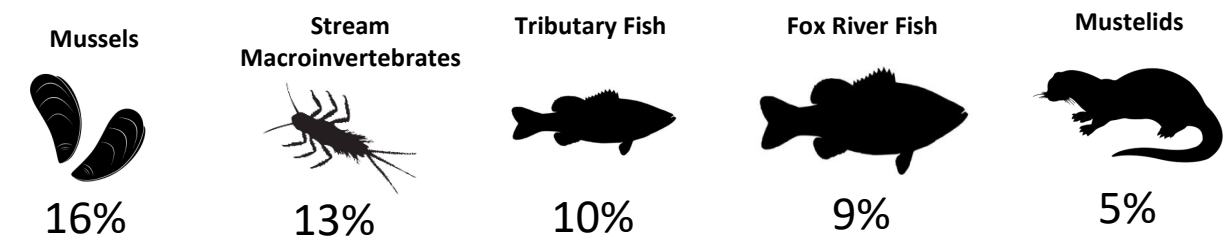
Progress Towards Loss of F&W Habitats BUI Target



Progress Towards Loss of F&W Populations BUI Target

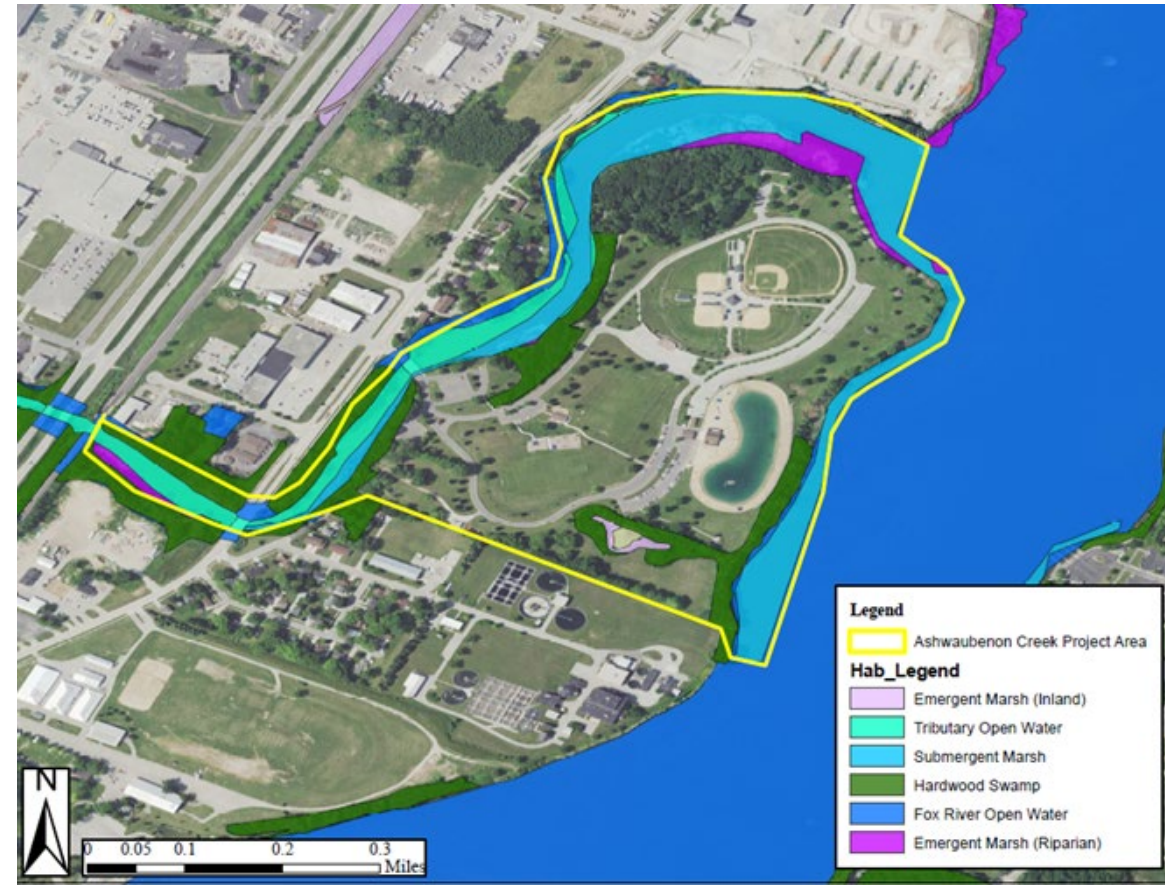


Top Populations Impacted



Other Factors

Project Cost	Feasibility	Co-benefits
5.5/10	6.5/10	6/10



Habitat Project Elements

- 17 acres Submergent Marsh improved
- 2.5 acres Riparian Emergent Marsh improved
- 0.5 DCA units for Fox River Open Water – fish
- 2 DCA units for Tributary Open water – one fish; one mussel
- 9 acres Hardwood Swamp improved
- 0.35 acres Inland Emergent Marsh improved

Project: UWGB / Mahon Creek

Rank: 11 of 18

Progress Towards Loss of F&W Habitats BUI Target



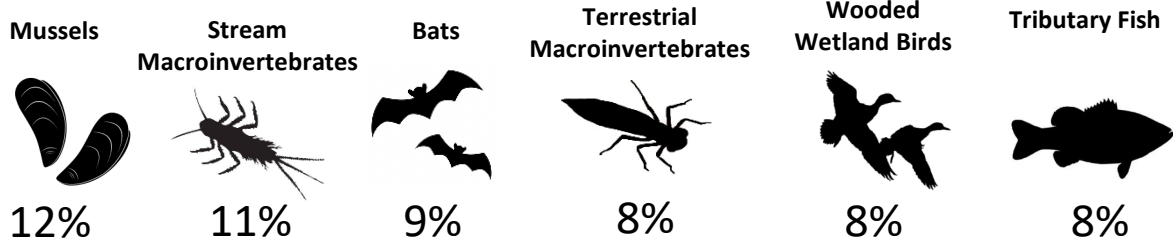
$$= \frac{0.132}{2.40} \text{ (5\%)}$$

Progress Towards Loss of F&W Populations BUI Target



$$= \frac{0.122}{1.75} \text{ (7\%)}$$

Top Populations Impacted



Other Factors

Project Cost	Feasibility	Co-benefits
4.4/10	7/10	5.5/10



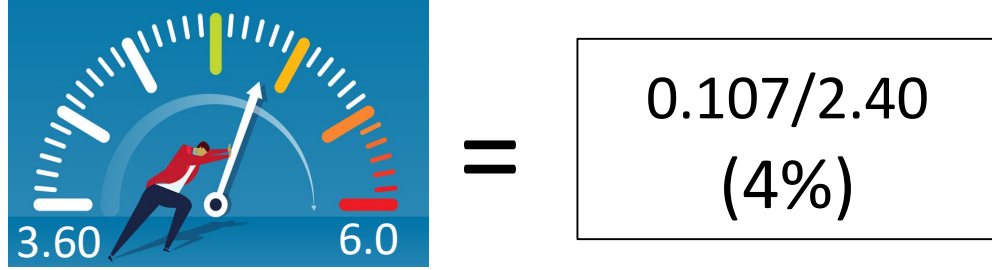
Habitat Project Elements

- 1km Great Lakes Beach improved
- 1.5 DCA units for Tributary Open Water – 0.75 fish; 0.75 mussel
- 80 acres Hardwood Swamp improved
- 0.5 acres Inland Emergent Marsh improved
- 35 acres Southern Dry Mesic Forest improved
- 3 acres Other Forest improved

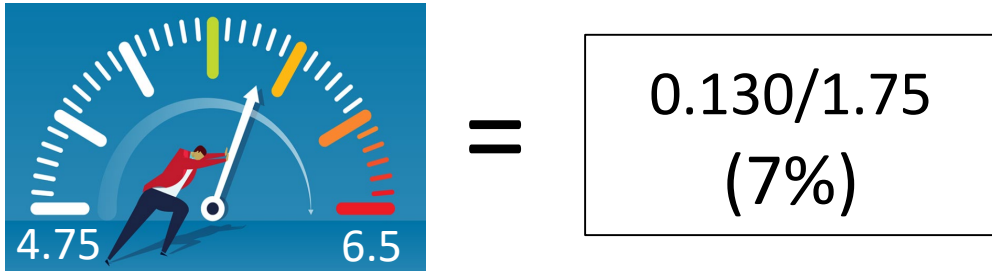
Project: Dutchman Creek

Rank: 12 of 18

Progress Towards Loss of F&W Habitats BUI Target



Progress Towards Loss of F&W Populations BUI Target



Top Populations Impacted

Mussels



16%

Stream
Macroinvertebrates



13%

Tributary Fish



10%

Fox River Fish



9%

Terrestrial
Macroinvertebrates



5%

Other Factors

Project Cost

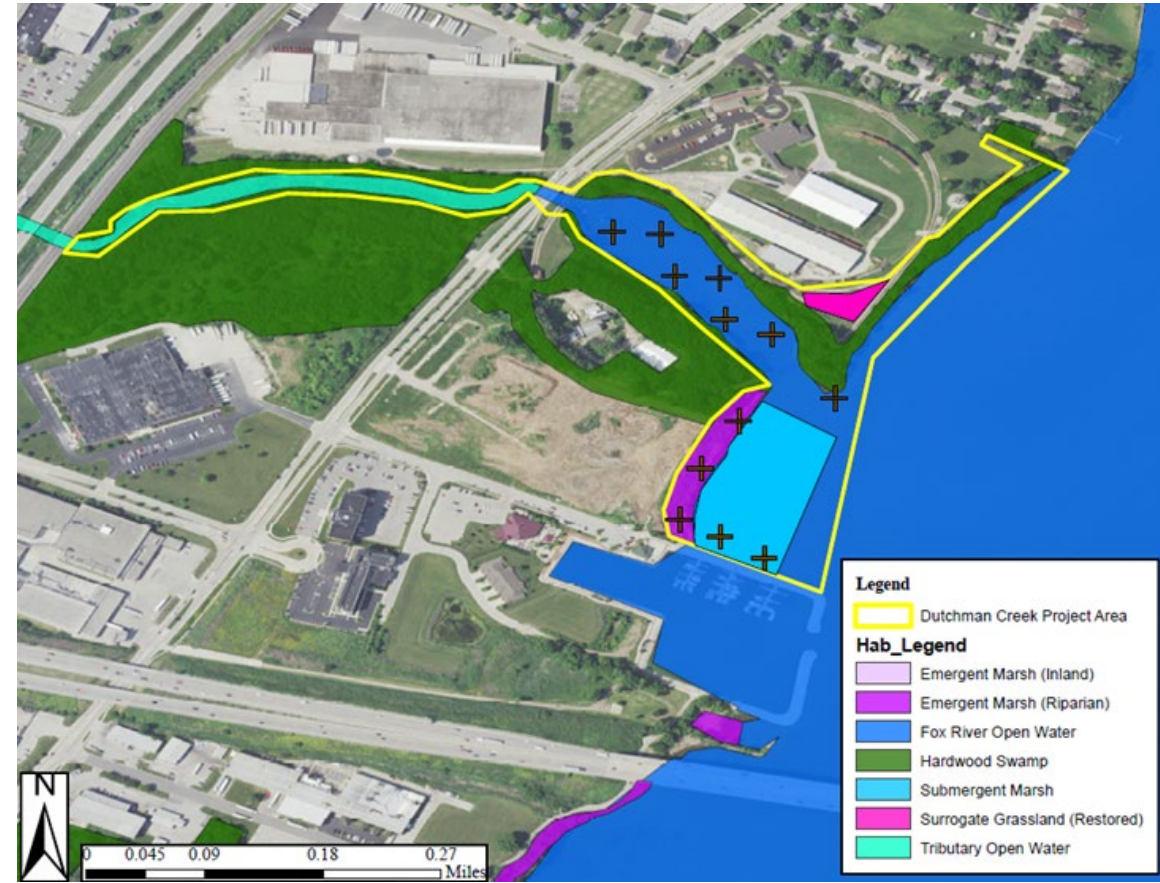
5.4/10

Feasibility

6.3/10

Co-benefits

5.9/10



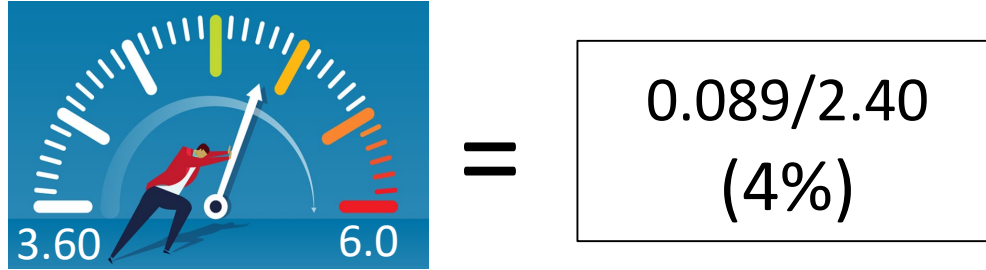
Habitat Project Elements

- 3 acres Submergent Marsh added
- 1 acre Riparian Emergent Marsh improved
- 0.5 DCA units for Fox River Open Water – fish
- 2 DCA units for Tributary Open Water – one fish; one mussel
- 3.25 acres Hardwood Swamp improved

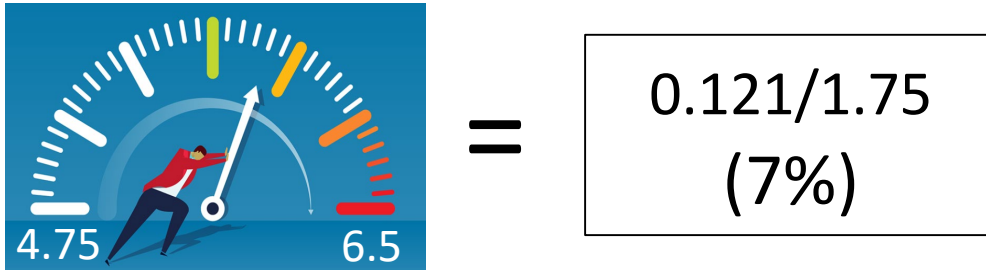
Project: Heritage Hill

Rank: 13 of 18

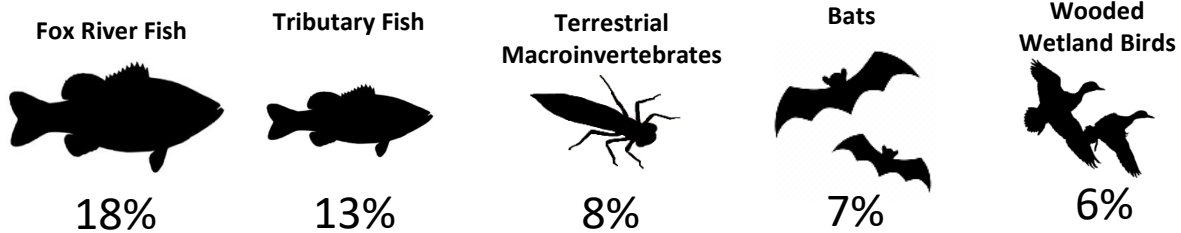
Progress Towards Loss of F&W Habitats BUI Target



Progress Towards Loss of F&W Populations BUI Target

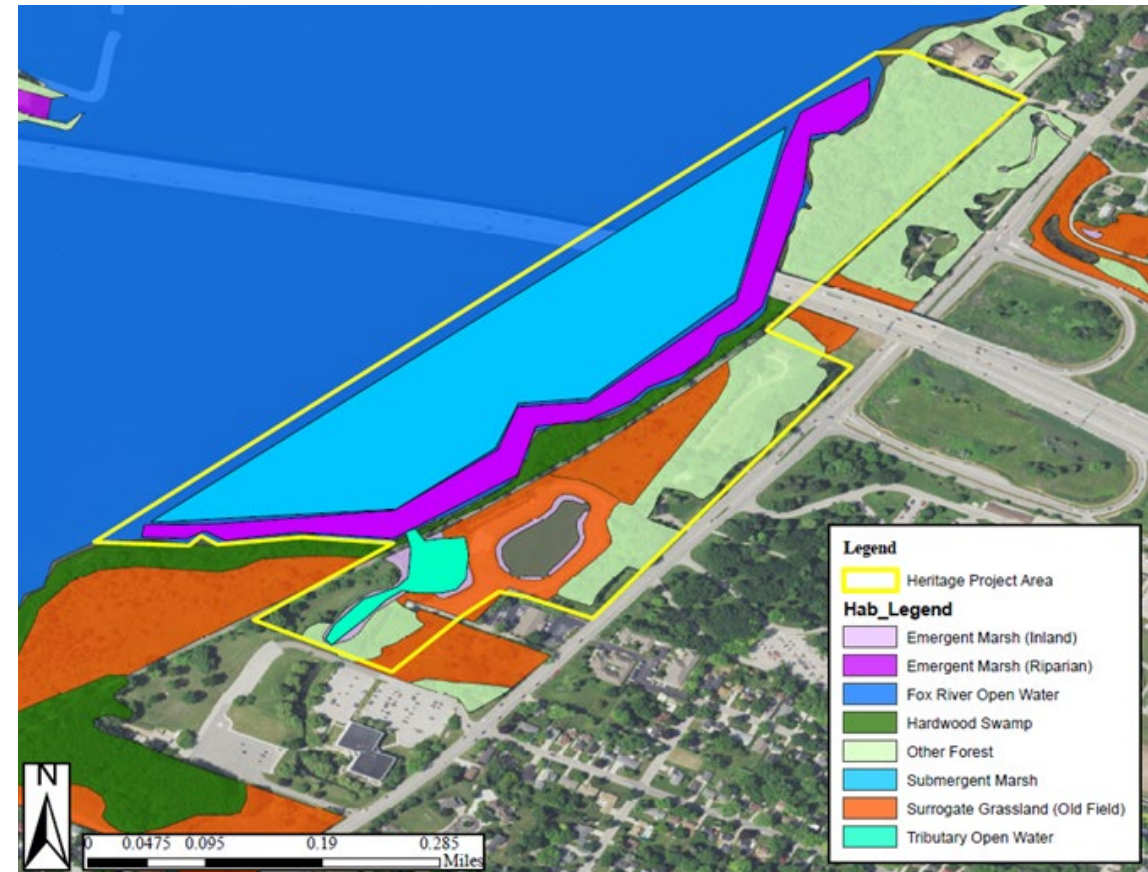


Top Populations Impacted



Other Factors

Project Cost	Feasibility	Co-benefits
4.9/10	6.7/10	6.6/10



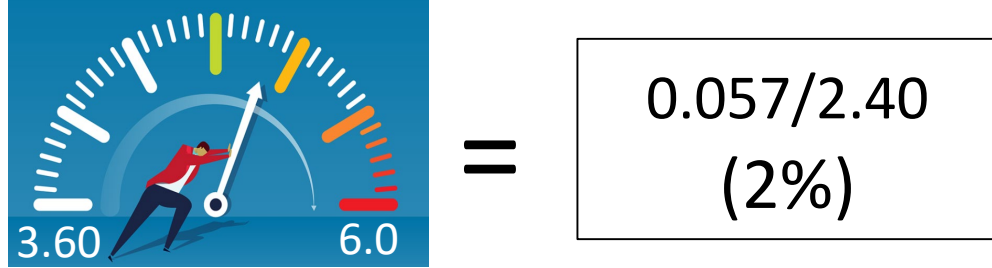
Habitat Project Elements

- 10 acres Submergent Marsh added
- 10 acres Riparian Emergent Marsh added
- 1 DCA unit for Fox River Open Water
- 0.5 DCA units for Tributary Open Water
- 2.5 acres Hardwood Swamp improved
- 1.5 acres Inland Emergent Marsh improved
- 10 acres Other Forest improved
- 2.5 acres Old Field improved

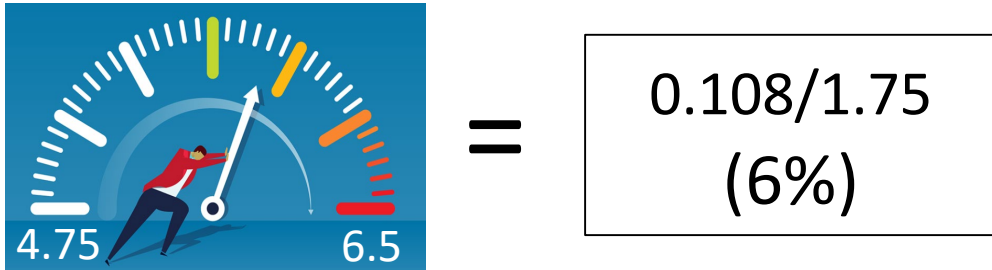
Project: Ken Euers

Rank: 14 of 18

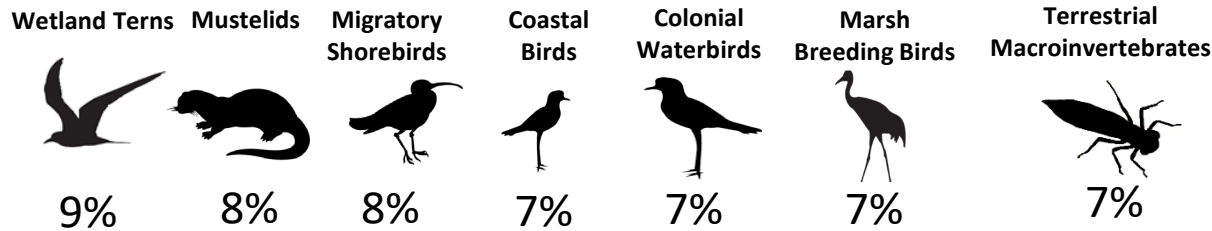
Progress Towards Loss of F&W Habitats BUI Target



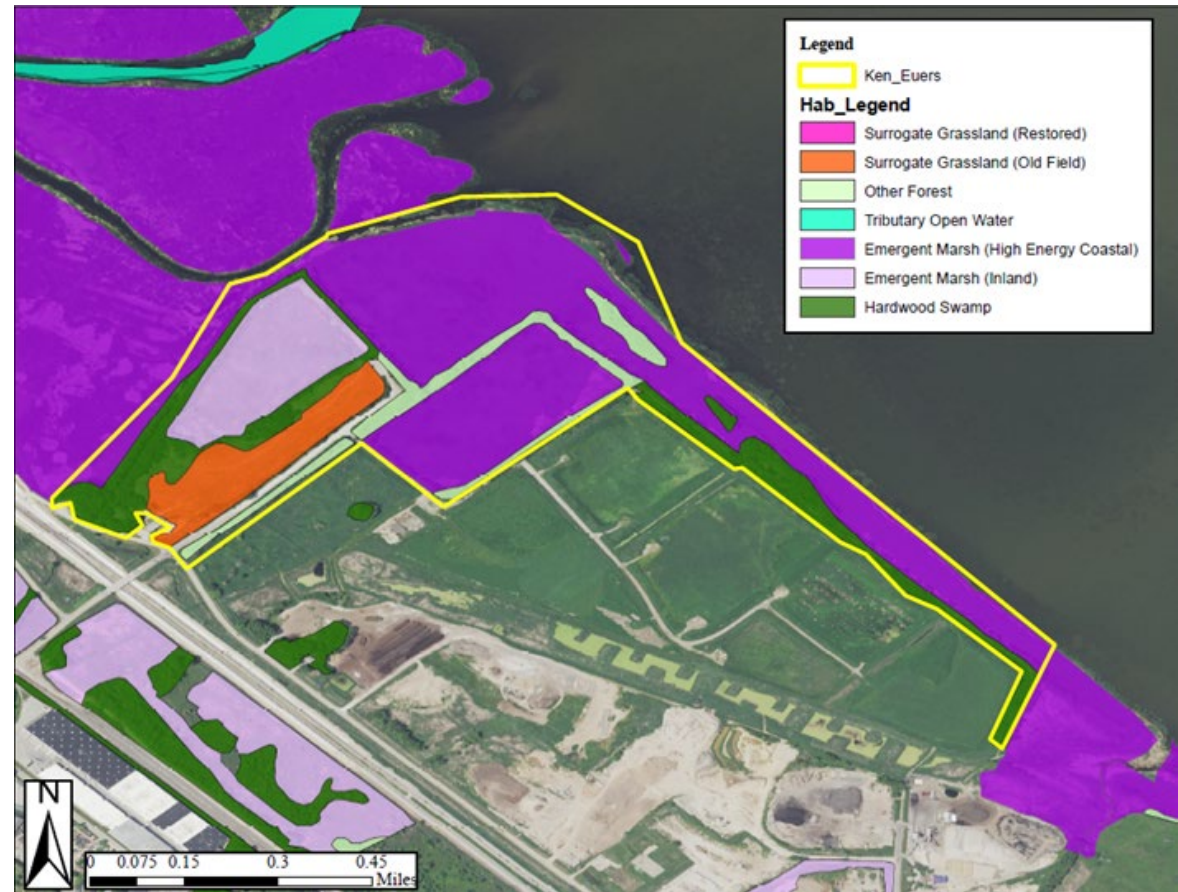
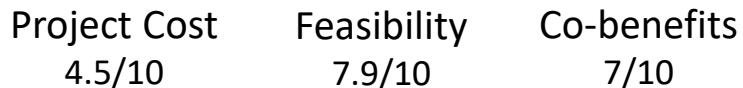
Progress Towards Loss of F&W Populations BUI Target



Top Populations Impacted



Other Factors



Habitat Project Elements

- 30 acres Coastal Emergent Marsh improved
- 0.5 DCA units Tributary Open Water – fish
- 15 acres Hardwood Swamp improved
- 18 acres Inland emergent Marsh improved
- 5 acres Other Forest improved
- 5.5 acres Restored Grassland added

Project: Cat Island Chain

Rank: 15 of 18

Progress Towards Loss of F&W Habitats BUI Target



=

0.035/2.40
(1%)

Progress Towards Loss of F&W Populations BUI Target



=

0.107/1.75
(6%)

Top Populations Impacted

Shoreline Fish



15%

Breeding Shorebirds



10%

Colonial Waterbirds



10%

Wetland Terns



8%

Migratory Shorebirds



8%

Other Factors

Project Cost

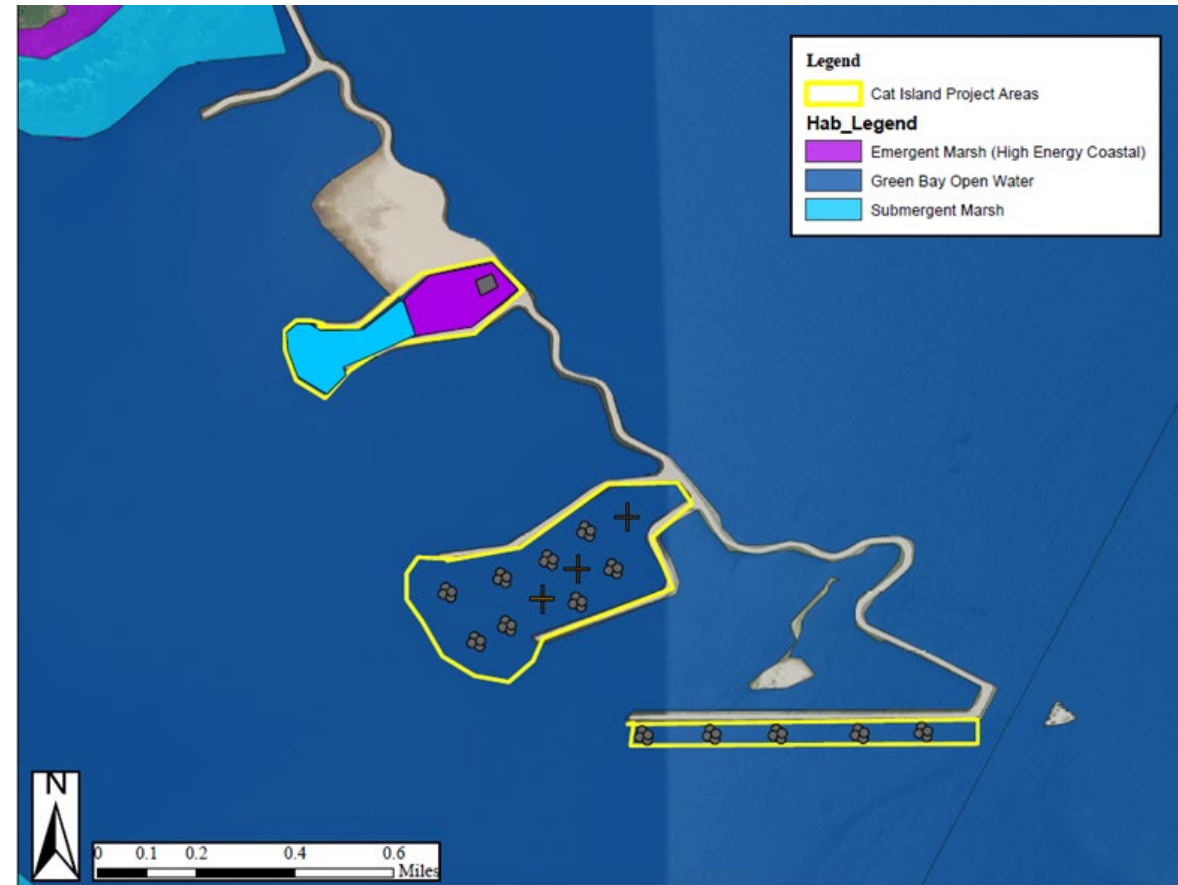
4.7/10

Feasibility

7.8/10

Co-benefits

6.2/10



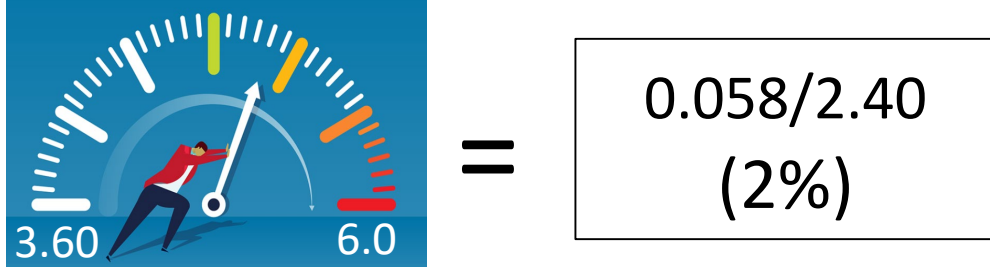
Habitat Project Elements

- 5 acres Coastal Emergent Marsh added
- 5 acres Submergent Marsh added
- 0.75 DCA units for GB Open Water – fish

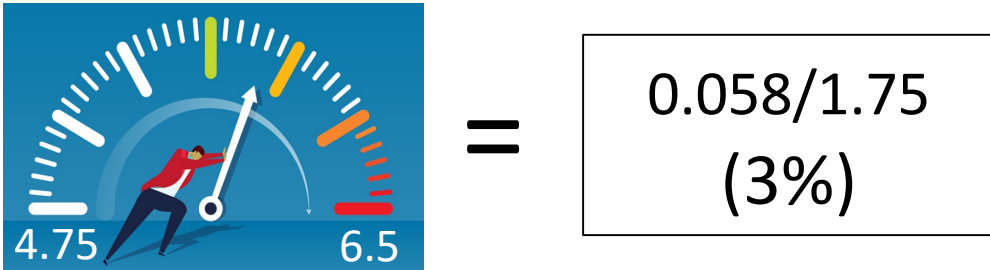
Project: Dead Horse Bay

Rank: 16 of 18

Progress Towards Loss of F&W Habitats BUI Target



Progress Towards Loss of F&W Populations BUI Target



Top Populations Impacted

Shoreline Fish



10%

Mussels



8%

Colonial Waterbirds



3%

Bald Eagle/ Osprey



2%

Migratory Waterfowl



2%

Other Factors

Project Cost

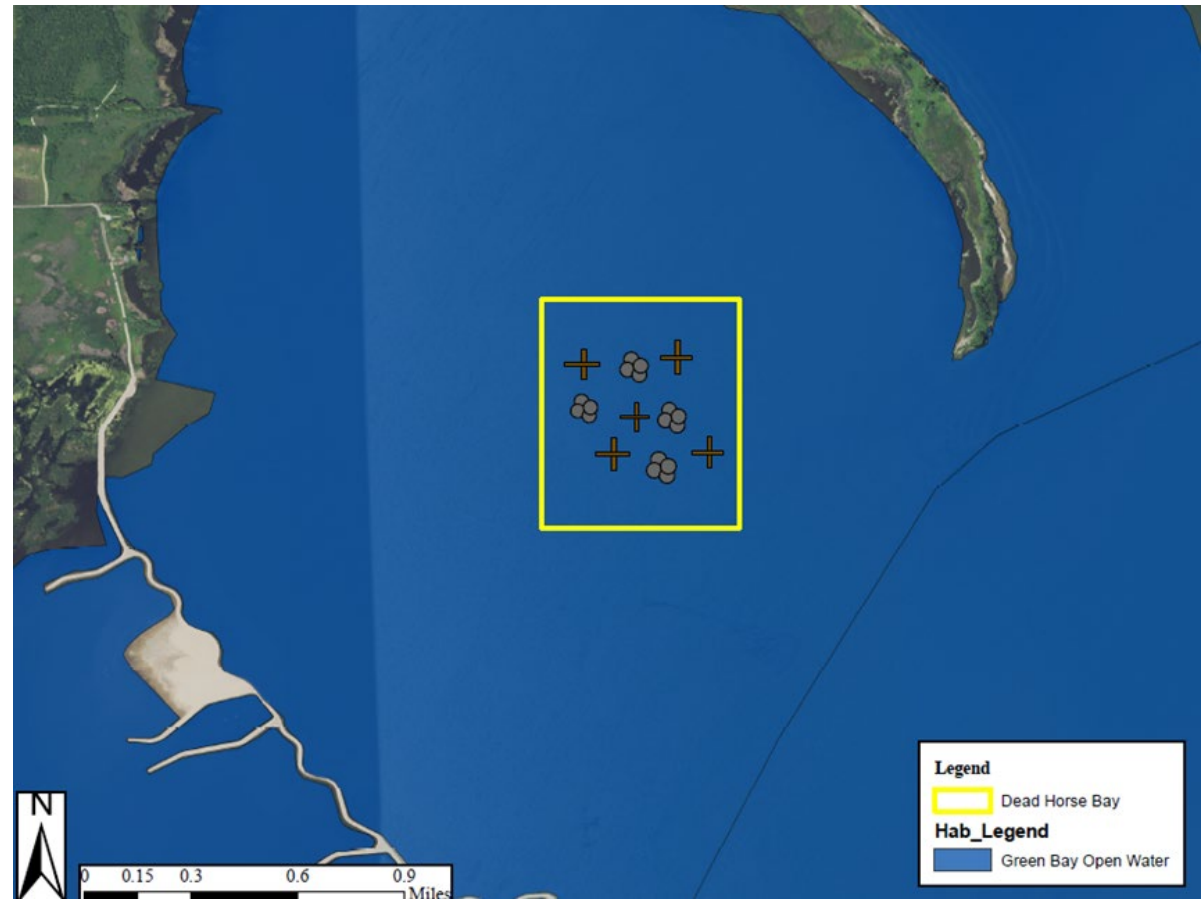
4.3/10

Feasibility

7.3/10

Co-benefits

4.4/10



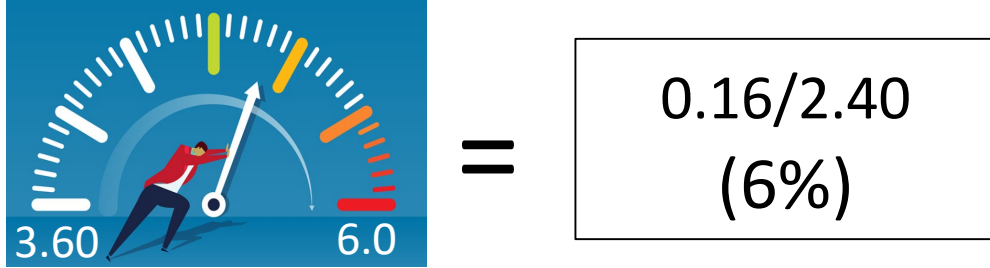
Habitat Project Elements

- 1.5 DCA units for Green Bay Open Water – 1 fish; 0.5 mussels

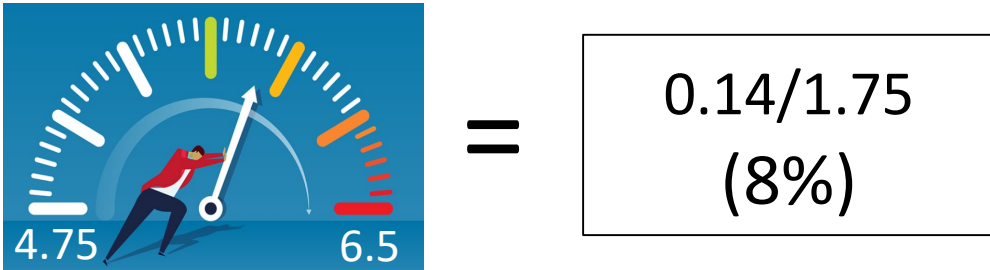
Project: Southwest Shoreline/Tank Farm Marsh

Rank: 17 of 18

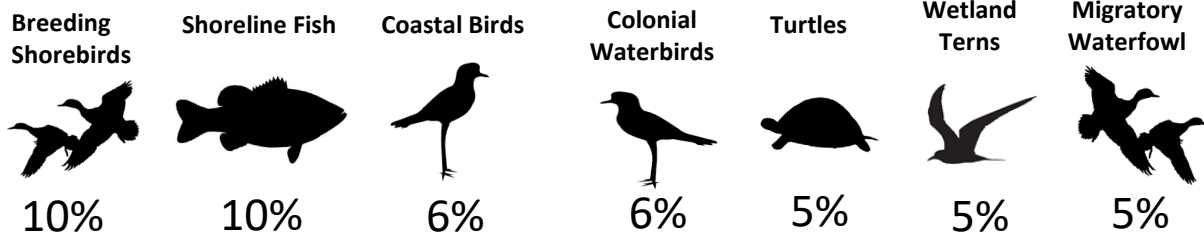
Progress Towards Loss of F&W Habitats BUI Target



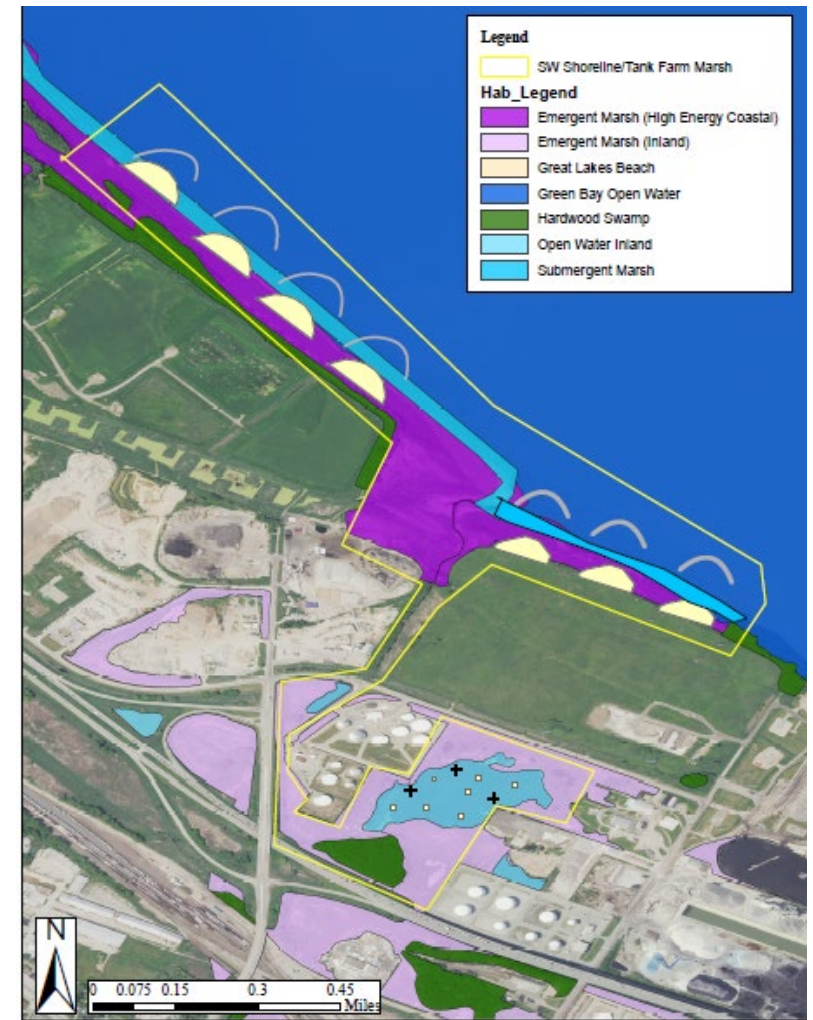
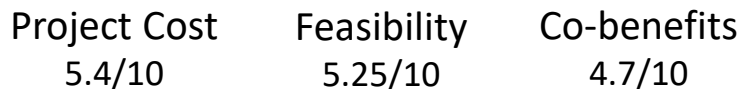
Progress Towards Loss of F&W Populations BUI Target



Top Populations Impacted



Other Factors



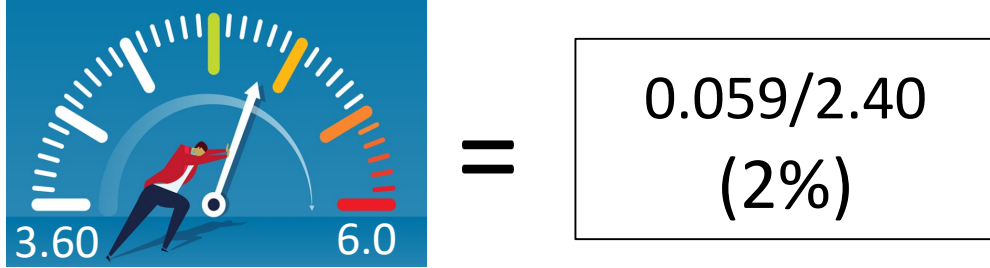
Habitat Project Elements

- 0.5 km Great Lakes Beach added
- 5 acres Submergent Marsh added
- 1 DCA unit for Green Bay Open Water
- 4 acres Hardwood Swamp improved
- 35 acres Inland Emergent Marsh improved
- 12 acres Inland Open Water improved

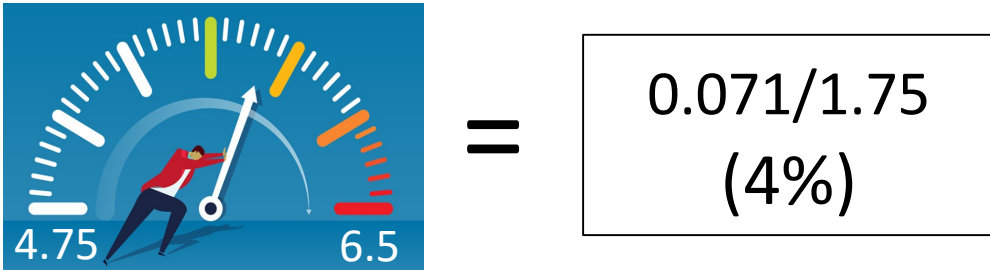
Project: Joliet Park

Rank: 18 of 18

Progress Towards Loss of F&W Habitats BUI Target



Progress Towards Loss of F&W Populations BUI Target



Top Populations Impacted

Shoreline Fish



18%

Mussels



8%

Bald Eagle/ Osprey



4%

Bats



3%

Migratory Waterfowl



2%

Other Factors

Project Cost

5/10

Feasibility

6.1/10

Co-benefits

3.9/10



Habitat Project Elements

- 1.5 DCA units for Green Bay Open Water – 1 fish; 0.5 mussel
- 5.5 acres Other Forest improved