



UNIVERSITY of WISCONSIN

GREEN BAY

Professional Program in Nursing

**Undergraduate (BSN)
Nursing Handbook**

August 22, 2016

Table of Contents

Table of Contents	2
Professional Program in Nursing Program Description.....	4
NURSE 1-2-1	4
Overview of the RN to BSN Program	4
Three Tracks, One Destination	5
Accreditation and Approval.....	5
Mission	5
Vision	5
Program Goals.....	6
Expected Program Outcomes	6
Professional Program in Nursing Organizational Framework.....	7
Figure 1: Professional Program in Nursing Organizational Chart.....	9
Program Requirements	10
Upper-Level Nursing Curriculum	10
Upper-Level Nursing Course Descriptions as of Fall 2014	11
Suggested Nursing Support Categories	13
Suggested Nursing Support Courses	14
Nursing Program Policies	16
Admission to Major Policy *	16
ADN and Other Students Enrolled in RN to BSN Courses *	16
Advising Policy	16
Articulation and Transfer Policy	16
Confidentiality Related to Coursework Policy	17
Course Periodicity Policy	17
Course Sequencing Policy	17
Disability Services Policy.....	18
Grading Policy.....	18
Grievance Policy	19
Program Assessment/Evaluation Policy	20
Progression/Graduation Policy	20
RN License Policy *	20
Research Policy	21

Social Media Coursework Related Policy	21
Stop Out Policy	22
Style Manual Policy for Written Papers	22
Using Special Topics in Nursing Courses as Electives Policy	22
Waiver and Substitution Procedures.....	23
Nursing Practicum/Field Experience Policies	23
Agency Fees	23
Background Checks.....	23
Guidelines for Community Health Nursing Practicum.....	24
Satisfaction of a Portion of Required NUR455 Community Health Nursing Practicum Hours	24
Student Health Policy	24
Students Performing Nursing Interventions Policy	28
Nursing Program Student Guidelines and Opportunities.....	28
Student Participation in Nursing Unit Governance	28
Students' Rights and Responsibilities	29
Academic Integrity	30
Independent Study	31
Honors in the Major.....	32
All University (Latin) Honors	32
Sigma Theta Tau International/Kappa Pi Chapter at-Large.....	32
Phi Kappa Phi.....	33

Professional Program in Nursing Program Description

NURSE 1-2-1

The NURSE 1-2-1 program, a collaboration between UW-Green Bay and Northeast Wisconsin Technical College (NWTC), is a campus-based program designed to provide qualified students an opportunity to earn a four year nursing degree (Bachelor of Science in Nursing) through the combined resources of both institutions. The NURSE 1-2-1 program involves an intensive curriculum including nursing, science, and clinical courses at healthcare facilities. Students complete year 1 (Science and Liberal Arts) and 4 (upper level nursing) at UW-Green Bay and years 2 and 3 (Associate Degree in Nursing) at NWTC. The program brings together the region's best nursing educators and healthcare technologies to create a single, cost-effective nursing program to meet growing healthcare demands, both in the numbers entering the profession and the depth of their nursing education.

RN TO BSN COMPLETION FOR REGISTERED NURSES

Overview of the RN to BSN Program

The Professional Program in Nursing at the University of Wisconsin Green Bay (UW-Green Bay) provides an opportunity for Registered Nurses (RNs) holding an Associate Degree or Diploma in Nursing to earn a Bachelor of Science Degree in Nursing (BSN). This accredited, high quality program is designed to be nurse friendly. It is a flexible program designed to meet the needs of adult learners and working registered nurses. Prior learning is acknowledged through liberal articulation and transfer policies.

The program is built upon the foundation of the Associate Degree or Diploma in Nursing and includes general education courses, courses supportive of Nursing, and the upper-level Nursing Major. The program consists of 120 credits for the BSN degree. The RN typically transfers 60 credits through articulation agreements. Additional credits completed at other universities, colleges, or community colleges may also transfer. The remaining UW-Green Bay requirements for graduation include 30 credits of general education and support courses for the Nursing Major, a college level chemistry course (if chemistry was not taken as part of the Associate Degree or Diploma in Nursing) and 30 credits of upper-level Nursing courses.

Based upon professional practice standards and what employers say they value most, the Nursing curriculum targets:

- Professional nursing roles and nursing science development
- Practice based on research, standards, and theory
- Strong communication, critical thinking, and leadership skills
- Autonomous therapeutic nursing interventions
- Culturally congruent and ethically sound nursing care
- Understanding of healthcare policy and finance
- Responsibility for being a change agent and for lifelong learning

Three Tracks, One Destination

The program is offered in three tracks: Campus Track (face-to-face on campus); BSN@HOME (via the Internet for nurses residing in the state of Wisconsin); and BSN- LINC/National Track (via the Internet for nurses residing outside the state of Wisconsin). The program requirements, expected outcomes, and curriculum are the same for all three tracks. Only one course, Community Health Nursing Practicum requires a practicum. The practicum involves scheduling practicum hours at an agency near the student's home.

The *Campus Track* is designed for RNs who reside within traveling distance of UW Green Bay. Nursing courses are offered in campus classrooms. Courses are typically “block scheduled,” meeting one day or evening per week. A limited number of courses also are offered face to face in Marinette and Rhinelander, Wisconsin classroom locations. Campus students may also take online courses through the BSN@Home Track. For more information, visit Campus Track.

The distance-based *BSN@HOME*, for RNs who are Wisconsin residents, is available through the combined resources of the Nursing programs at the UW campuses in Green Bay, Eau Claire, Madison, Milwaukee, Oshkosh, and Stevens Point. The BSN is awarded by the home institution, in this case UW-Green Bay. All general education and support courses are offered via the Internet through UW-Green Bay Adult Degree Program and UW-Colleges on-line. BSN@HOME students are welcome to take courses on campus.

The *BSN-LINC/National Track* is designed for RNs who reside outside the state of Wisconsin. Students must have a current, unencumbered RN license from any state in the U.S. for eligibility. Practicum is arranged in the student's home state. All courses are available via the Internet.

Program Organization

Accreditation and Approval

The nursing program at the University of Wisconsin, Green Bay is accredited by the Commission on Collegiate Nursing Education (www.aacn.nche.edu/ccne-accreditation).



The program is approved by the Wisconsin Board of Nursing, PO Box 8935, Madison, WI 53708, Tel 608-267-2357; TTY #- 608-267-2416 (hearing or speech impaired only).

Mission

Baccalaureate and graduate programs provide high quality, student-centered nursing and health profession education that builds on prior experiences, knowledge and skills. Students are inspired to think critically and address complex health issues in a diverse and evolving world, conscious of environmental sustainability. These programs transform communities by improving health and healthcare delivery.

Revised and Approved of by NUFO 5/5/14

Vision

Nursing's vision is identical to the vision of the UW-Green Bay College of Health, Education and Social Welfare which is: *Together we will inspire students and transform communities.*

Program Goals

The Program Goals are to:

1. Offer a baccalaureate completion degree (BSN) for Registered Nurses that serves as a foundation for the provision of quality healthcare, career advancement, and graduate education (Campus, BSN@HOME, BSN LINC).
2. Offer a pathway for students to earn a baccalaureate degree (BSN) via the combined resources of UWGB and NWTC (NURSE 1-2-1).
3. Offer a graduate degree (MSN) to enable nurses to lead and manage health care systems across multiple settings.
4. Collaborate to offer an undergraduate Health Information Management & Technology (HIMT) program to prepare students to lead, manage and administer health information technologies that span across divisions, departments, and businesses.
5. Collaborate to offer a Master of Science in Health and Wellness Management (MSHWM) to prepare students to ensure the delivery of high quality health and wellness programs designed to improve the health of populations.
6. Maintain an environment conducive to adult learning.
7. Maximize program accessibility by utilizing various course delivery methods, including on-line and face-to-face.
8. Collaborate with the community of interest in advancing the education of nurses and health professionals.

Revised and approved of by NUFO 5/5/14

Expected Program Outcomes

The Baccalaureate program prepares the graduate to:

1. Use knowledge from liberal and interdisciplinary problem focused education as a basis for nursing practice.
2. Use knowledge and skills in leadership, quality improvement and patient safety to provide high quality healthcare.
3. Engage in a systematic process of evaluation, translation, and application of scientific evidence to inform nursing practice.
4. Recognize the role of information management and patient care technologies to improve patient care outcomes.
5. Examine how healthcare policies, including financial and regulatory, influence healthcare systems and nursing practices.
6. Integrate interprofessional communication and collaborative skills to optimize holistic patient care.
7. Apply health promotion, disease and injury prevention strategies to improve population health.
8. Promote professionalism and model the values of altruism, autonomy, caring, human dignity, integrity and social justice in nursing practice.
9. Synthesize previous and newly acquired knowledge, theory, skills, and attitudes to address health care needs of culturally diverse individuals and populations across the continuum of healthcare environments.

Revised and approved of by NUFO 2/1/10

Professional Program in Nursing Organizational Framework

Figure 1 depicts the organizational framework and the nursing program's position in the College of Health, Education and Social Welfare (CHESW). The budgetary chairperson of the Nursing Unit reports to the Dean of the College of Health, Education and Social Welfare.

As designated in the Administrative Code, the Nursing Unit has an active Executive Committee consisting of tenured faculty members. The Chairperson of the Nursing Unit chairs the Executive Committee. Decisions on personnel, budget, and curriculum require Executive Committee input. The Chairperson of the Nursing Unit also supervises the Nursing Unit faculty, staff, Directors and Coordinators. The Director of National/BSN-LINC track is responsible for directing policy for the national track. The BSN@HOME Steering Committee, made up of the six collaborating UW-System Nursing Program Deans/Chairs, is responsible for directing policy for the BSN@HOME. The Chairperson of the Nursing Program serves as the representative on the BSN@HOME Steering Committee and is the direct communication link between the BSN@HOME Steering Committee and faculty.

The Nursing Advisory Committee is made up of representatives of the community of interest to the Nursing Program. The Advisory Committee communicates with the Nursing Unit Chairperson and Nursing faculty about how the program can best serve the needs of the community of interest.

Nursing faculty comprise the Nursing Unit Faculty Organization (NUFO), the main decision-making body of the Unit, which is chaired by the Nursing Unit Chairperson. NUFO is responsible for: (1) approving recommendations of NUFO standing committees, (2) recommending policy/procedure to the Nursing Unit Executive Committee on matters with budgetary and/or personnel implications, (3) identifying staffing needs and making recommendations to the Executive Committee, and (4) assuring implementation of approved policies/procedures/unit activities. NUFO Bylaws are congruent with the Mission Statement of the Professional Nursing Program and the policies and procedures on faculty organization as outlined in the UW-Green Bay Faculty Handbook (Chapter 53.13).

NUFO functions as an approval body for its three standing committees: Curriculum Development Committee (CDC), Student Graduate Development Committee (SGDC), and Assessment and Evaluation Committee (AEC). According to the Bylaws: the purpose of CDC is to make recommendations to NUFO regarding curriculum and teaching learning practices; the purpose of the SGDC is to make recommendations to NUFO regarding policies and procedures related to prospective students, current students, and alumni; and the purpose of AEC is to make recommendations to NUFO regarding programmatic evaluation via student, graduate, alumni, and employer input.

Students input is solicited in the Curriculum Development, Student-Graduate Development, and Assessment and Evaluation Committees. Student participation in Nursing Unit committees is voluntary and may be accomplished by bringing meetings to the students during a portion of regularly scheduled class time, virtual meetings via the Internet, and/or via teleconferences, or individual student involvement with a committee.

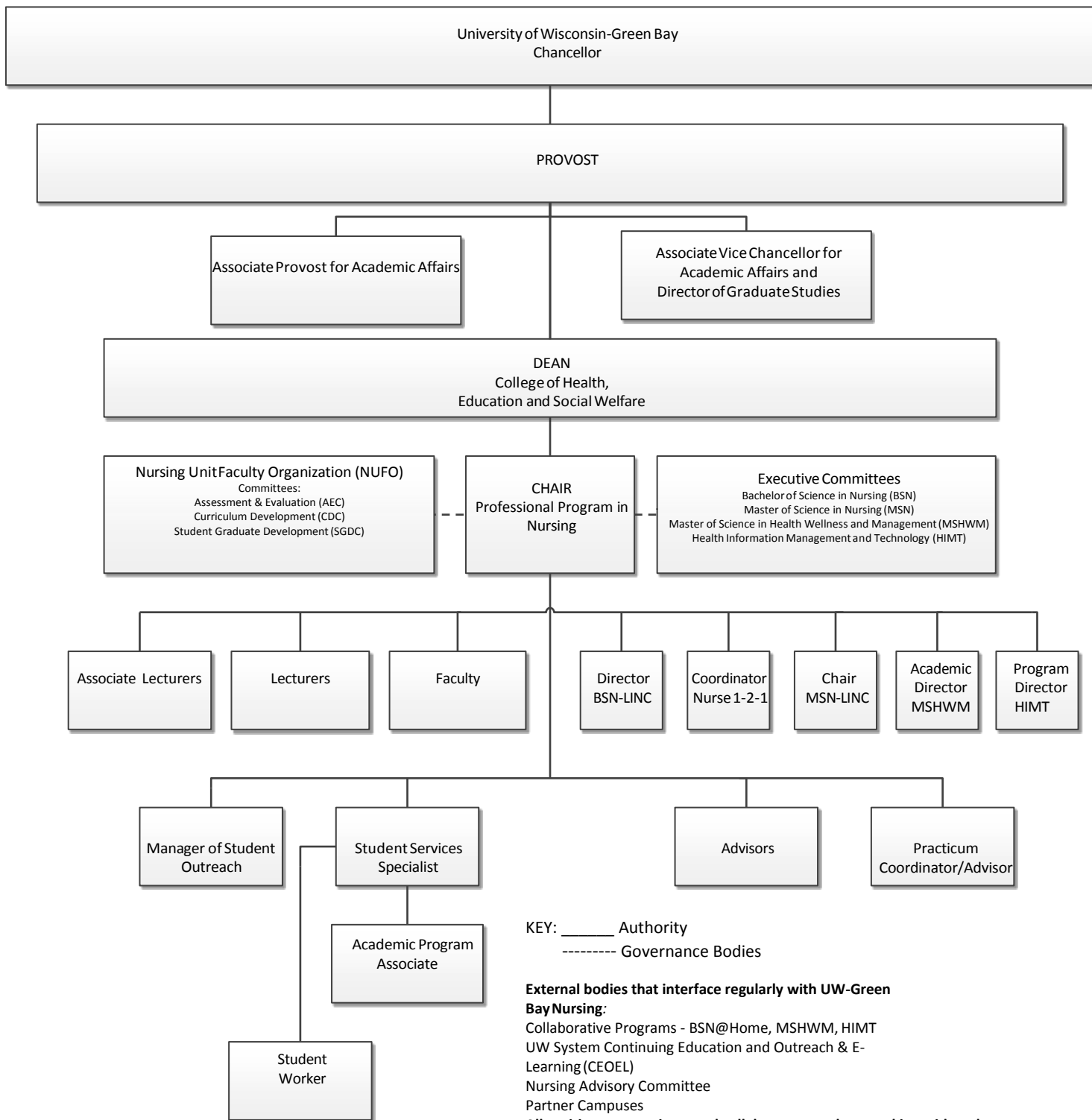
Communication with students can be face-to-face and/or digitally mediated through e-mail, web

pages, mailed communication, and telephone. The faculty, NUFO and its standing committees (CDC, SGDC, and AEC), advisors, and other staff work directly with students to provide access to the program, assist with admission and progression in the major, facilitate learning, achievement of expected program outcomes, and eventual graduation, and assure accountability of the program to the community of interest.

Revised 8-17-16

Figure 1: Professional Program in Nursing Organizational Chart

University of Wisconsin-Green Bay, Professional Program in Nursing Organizational Chart



KEY: _____ Authority
 ----- Governance Bodies

External bodies that interface regularly with UW-Green Bay Nursing:

- Collaborative Programs - BSN@Home, MSHWM, HIMT
- UW System Continuing Education and Outreach & E-Learning (CEOEL)
- Nursing Advisory Committee
- Partner Campuses

All entities communicate and collaborate together, working with and on behalf of students, potential students and alumni

Program Requirements

General Education	Credits
Fine Arts	3
Humanities	9
Social Sciences	*
Natural Sciences	*
World Culture	3
Ethnic Studies	3
Nursing Support	
Speech	*
Written Communication	3
Electives	6
Statistics	3
Critical Thinking Elective	**
Chemistry	***
Lower-Level Nursing	*
Upper-Level Nursing	
407 Foundations of Professional Nursing Practice	3
441 Chronic Care Management	3
446 Research and Evidence-Based Practice or	3
487 Evidence-Based Nursing Practice	
447 Leadership and Management	3
453 Information Management & Healthcare Technology	3
454 Community Health Nursing	3
455 Community Health Nursing Practicum	3
490 Synthesis for Nursing Practice	3
492 Nursing Special Topics	6

*Satisfied by articulation agreements/transfer credits

**Critical thinking elective can be satisfied by certain humanities courses such as philosophy, or taken as a separate course.

***For students matriculating September 2007 or after, a college level chemistry course is required if not previously taken. High school chemistry does not fulfill the program requirement.

Upper-Level Nursing Curriculum

A new upper-level nursing curriculum began in fall 2014. Students are encouraged to work with nursing advisors to revise academic plans, as needed.

Comparison of Nursing Courses in Old and New Curriculum

Upper-Level Nursing Courses Prior to Fall 2014	Upper-Level Nursing Courses Beginning in Fall 2014
317 Health Assessment (4 cr)	
341 Theoretical Foundations (4 cr)	407 Foundations of Professional Nursing Practice (3 cr)
434 Nursing Research (3 cr)	446 Research and Evidence-Based Practice (3 cr)
437 Management & Leadership (4 cr)	447 Leadership & Management (3 cr)
444 Community Health Nursing (3 cr)	454 Community Health Nursing (3 cr)
	441 Chronic Care Management (3 cr)
	453 Information Management & Healthcare Technology (3 cr)
445 Community Health Nursing Practicum (3 cr)	455 Community Health Nursing Practicum (3 cr)
451 Synthesis for Nursing Practice (3 cr)	490 Synthesis for Nursing Practice (3 cr)
492 Nursing Special Topics (6 cr)	492 Nursing Special Topics (6 cr)

Upper-Level Nursing Course Descriptions as of Fall 2014

The following are upper level nursing courses in the Campus, BSN@HOME, or BSN-LINC/National track.

NURSING 407

Foundations of Professional Nursing Practice

Philosophical perspectives, theories, and standards are applied to the practice of professional nursing. Factors influencing nursing/health care delivery are analyzed. Professional communication skills are enhanced. This is a writing emphasis course. P: Nursing major and RN license.

3 credits

NURSING 441

Chronic Care Management

Exploration of interaction of biological, psychological, social, and environmental factors important to understanding management of chronic conditions at the individual, family, community, and societal levels. P: Nursing major and RN license

3 credits

NURSING 446

Research and Evidence-Based Practice

This course introduces the importance of research to improve clinical practice, strategies to

evaluate the quality of research and evidence, and increase integration of research into practice. P: Nursing major and RN license, Math 260, Comm Sci 205 or Bus Admin 216 or concurrent enrollment.

3 credits

NURSING 447

Leadership and Management

Examines nursing leadership and management using relevant theories and concepts. Analyze decision-making in relation to communication, delegation, supervision and group process. P: Nursing major and RN license.

3 credits

NURSING 453

Information Management and Healthcare Technology

Utilize computer and information/decision science to support quality and safety in health care. Explore informatics issues and examine nursing's role in healthcare technology. Opportunities to use and master various healthcare technologies and healthcare data will be giving. P: Nursing major and RN license.

3 credits

NURSING 487

Evidence-Based Nursing Practice

This course focuses on the evaluation and utilization of research and other sources of knowledge necessary to address patient needs and provide quality care. Course content covers methods, appraisal and utilization of research findings toward the goal of complementing best practices. Barriers to the use of evidence-based practice and facilitating innovations within the workplace are addressed. P: Nursing major and RN license; Math 260, Comm Sci 205 or Bus Adm 216, or concurrent enrollment.

NURSING 454

Community Health Nursing

Nursing care of populations and communities to facilitate optimal health outcomes. P: Nursing major and RN license.

3 credits

NURSING 455

Community Health Nursing Practicum

This course complements the theory, models, and concepts learned in Community Health Nursing. It is a practice component that brings community health nursing into reality.

The focus is on disease prevention and health promotion for individuals, families, aggregates, and communities. P: Nursing major, and RN license; and Nursing 454 or concurrent enrollment.

3 credits, Field experience required

NURSING 490

Synthesis for Nursing Practice

Course focus is synthesis of professional nursing roles introduced in previous courses. In

addition, nursing theories are analyzed in light of their value to practice. Nursing's societal involvement is emphasized. P: Nursing major, and RN license; and completion of Nursing 407, 441, 446, 447, 453, 454, 455, and 492 or concurrent enrollment.

3 credits

NURSING 492

Special Topics in Nursing

Course topics vary. Typical topics include Healthy Aging, Pharmacology, Pathophysiology, Women's Health Care, Global Aspects, Informatics, Cross-Cultural, End-of-Life, Child with Chronic Illness, School Health, Ethical Issues. P: major in NURSING and R.N. license. Six credits of special topics required, repeatable to 12 cr. **2 or 3 credits depending on course.**

Suggested Nursing Support Categories

Nursing support courses emphasize the concepts of communication, critical thinking, and therapeutic nursing intervention. They are non-nursing elective courses offered outside of the Nursing Department or additional Special Topics in Nursing courses that support nursing practice and career goals. The concepts of communication, critical thinking, and therapeutic nursing interventions are also emphasized in the upper level nursing courses.

Communication

Communication is a dynamic interactive process which occurs between individuals and/or groups to formulate, convey, and assimilate thoughts, perceptions, and ideas.

Communication is one of the most important skills that nurses need. Effective communication is the very fiber of nursing practice. To facilitate competence in oral presentation and technical writing skills, six credits in communication are required. Of these, three credits of speech are transferred as per articulation agreement. The additional communication requirement is satisfied by a three credit writing course. The writing course needs to be of an advanced level beyond Introduction to College Writing, and is normally satisfied by an Expository Writing course.

Critical Thinking

Critical thinking is the intellectually disciplined process of active and skillful conceptualizing, applying, analyzing, and/or evaluating information. As a guide to belief and action, information is gathered from or generated by observation, experience, reflection, reasoning, or communication.

Nurses must be able to think critically and problem solve effectively. To support the development of critical thinking six credits are required. Of these required elective credits, students must take one course in Statistics. Any college level statistics course is acceptable. The other 3 credits are satisfied by a course that studies thinking (meta-thinking). Classroom topics that are typically covered are critical thinking processes, reflective thinking, decision-making, problem solving, critical debate, etc. Courses that can be used to satisfy this requirement include Introduction to Philosophy, Elementary Logic, Development of Creative-Critical Thinking, Professional Ethics and Problem Solving and others. See suggested list of nursing support courses below.

Electives

Therapeutic nursing interventions are actions performed by nurses addressing human responses to actual and potential health problems. Six elective credits are required to enhance competence in delivery of therapeutic nursing interventions. A variety of courses can satisfy this requirement. Courses in this category support the RN's career goal and advance thinking and competence in nursing practice.

Courses that could be used to satisfy this requirement include Introduction to Management, Abnormal Behavior, Human Nutrition, Dying, Death and Loss, Leadership in Organizations, Sociology of the Family, Counseling Across the Lifespan, and many others. See suggested list of nursing support courses below.

Approved NUFO 5/10/04

Suggested Nursing Support Courses

Chemistry

For students matriculating September 2007 or later, a college level chemistry course is required if not previously taken.

CHEM 108	General Chemistry
CHEM 211	Principles of Chemistry I
CHEM 212	Principles of Chemistry II

Communication

Speech:

The speech requirement is satisfied based on coursework transferred per articulation agreement.

Written Communication:

ENG COMP 105	Expository Writing
--------------	--------------------

Critical Thinking

Statistics, choose one:

BUS ADM 216	Introduction to Business Statistics
COMM SCI 205	Social Science Statistics
MATH 260	Introductory Statistics

Critical Thinking Elective, choose one:

(Other courses with proper rationale and approval of advisor can be substituted)

BUS ADM 206	Law & the Individual
INFO SCI 210	Information Problems
ECON 203	Micro Economic Analysis
ECON 202	Macro Economic Analysis

HUM BIO 205	Biotechnology and Human Values
HUM DEV 424	The Development of Creative and Critical Thinking
HUMSTUD213	Ethnic Diversity and Human Values
HUM STUD 385	Perspectives on Human Values: First Nations
PHILOS 101	Introduction to Philosophy
PHILOS 102	Contemporary Ethical Issues
PHILOS 105	Introduction to Social and Political Philosophy
PHILOS 111	Elementary Logic
PHILOS 208	Biomedical Ethics
PHILOS 212	Philosophy, Religion, and Science
PHILOS 213	Ancient Philosophy
PHILOS 214	Early Modern Philosophy
PHILOS 217	Introduction to the Philosophy of Religion PU
EN AF 202	Introduction to Public Policy

Electives

Electives choose two:

(Other courses with proper rationale and approval of advisor can be substituted)

ACCTG 300	Introductory Accounting
ANTHRO 100	Varieties of World Culture
ANTHRO 342	Human Evolution
BUS ADM 202	Business & Its Environment
COMM 166	Fundamentals of Interpersonal Communication
COMM 335	Organizational Communication
ECON 203	Micro Economic Analysis
ECON 202	Macro Economic Analysis
ENV SCI 102	Introduction to Environmental Science
HUM DEV 331	Infancy and Early Childhood
HUM DEV 332	Middle Childhood and Adolescence
HUM DEV 336	Gender Development Across the Lifespan
HUM DEV 343	Adulthood and Aging
HUM DEV 344	Dying, Death, and Loss
HUM DEV 345	Human Sexuality
HUM DEV 346	Culture, Development, and Health
HUM DEV 350	Developmental Psychobiology
HUM DEV 353	Family Development
NUT SCI 300	Human Nutrition
NUT SCI 242	Food and Nutritional Health
PSYCH 330	Social Psychology
PSYCH 429	Theories of Personality
PSYCH 435	Abnormal Behavior
SOCIOL 308	Sociology of the Family
SPANISH 101	Introduction to Spanish Language I

Nursing Program Policies

Admission to Major Policy *

* This policy does not apply to NURSE 1-2-1 students.

Students must meet the following requirements to be admitted to the UW-Green Bay Nursing Major:

1. Graduation from an Associate Degree in Nursing program or from a three-year diploma program in Nursing;
2. Grade point average of 2.5 on a 4.0 scale (or equivalent) on post-secondary coursework;
3. Current, unencumbered RN license in any state

It is recommended that applicants consult with a Nursing advisor.

Approved NUFO 3-23-15

ADN and Other Students Enrolled in RN to BSN Courses *

* This policy does not apply to NURSE 1-2-1 students.

Students currently enrolling in ADN or diploma nursing programs may request permission to take N446 Research and Evidence Based Practice, N454 Community Health Nursing, N453 Information Management and Healthcare Technology, and N492 Special Topics in Nursing courses while completing the last two semesters (or equivalent) of their basic nursing program. Prior to enrolling, all general education and nursing support courses required for the BSN degree must have been completed with an overall GPA of at least 2.5 and a 3.0 GPA in ADN nursing courses. Contact an advisor for further details.

The following Special Topics in Nursing courses may be open to all UW-Green Bay students: N492 Global Aspects in Healthcare; N492 Geographic Information Systems (GIS) in Health, and N499 Travel Courses.

Approved of NUFO 8/26/13

Advising Policy

All students have a Nursing Program advisor who works in collaboration with nursing faculty. The advisor helps the student interpret institutional requirements, provides advice about courses, and helps the student interpret progress toward the degree. Students have the responsibility of contacting the Nursing Program advisor at least once a year for academic progress planning.

Approved NUFO 3-8-04

Articulation and Transfer Policy

Graduates from Associate Degree and Diploma programs in Nursing receive 60 college transfer credits to their Bachelor of Science in Nursing degree for lower level coursework. Students matriculating fall 2007 or later who have not completed a college level chemistry course need to take chemistry as a non-nursing support course. This policy is consistent with the System to System Program Articulation Agreement (University of Wisconsin System and Wisconsin

Technical College System, 2001).

Approved NUFO 5-3-10

Confidentiality Related to Coursework Policy

When communicating information in online or face to face courses based on personal or work-related experiences, keep in mind that the University of Wisconsin-Green Bay adheres to rules and policies of Family Educational Rights and Privacy Act (FERPA) and Health Insurance Portability and Accountability Act of 1996 (HIPAA). It is expected that students will judiciously protect the privacy of patients, peers, family, or agency/institution by not disclosing confidential information outside of courses. To maintain anonymity, methods such as alias or initials should be used.

For more information on these laws, please refer to the following websites:

- [FERPA](#)
- [HIPAA](#)

Course Periodicity Policy

The Nursing Program offers some of its courses on a periodicity schedule (not every semester). Periodicity schedules are different for each track. The periodicity schedules are constructed so that students can in any track finish the program in two years or less. Periodicity schedules are communicated to students on the website and by their advisor and/or nursing faculty.

Approved of NUFO 5/10/04

Course Sequencing Policy

The upper-level Nursing courses can be taken in any order with the exception of 455 Community Health Nursing Practicum and 490 Synthesis for Nursing Practice. Exceptions to this policy require a waiver (ask your advisor if a waiver is needed).

- **Statistics** must be taken prerequisite to or concurrent with the 446 Research and Evidence-Based Practice course and 487 Evidence-Based Nursing Practice course.
- **454 Community Health Nursing** must be taken before or concurrent with 455 Community Health Nursing Practicum
- **490 Synthesis for Nursing Practice** should be taken concurrent with or after completion of final nursing course(s). Taking Synthesis for Nursing Practice in your last semester before graduation provides opportunity to synthesize learning from all coursework including general education courses, nursing support courses, and upper-level nursing courses.

General recommendations to consider in planning your courses:

- It is highly recommended that the **advanced written communication course** (e.g., Expository Writing) be taken early in the program.
- Students planning to pursue graduate education should make themselves aware of admission requirements to graduate programs.

Approved NUFO 9/22/14

Disability Services Policy

In concordance with UW-Green Bay policy, students with a disability should contact the Disability Services Office at UW-Green Bay (dis@uwgb.edu or 920-465-2841 or <http://www.uwgb.edu/ds/contact>) to request accommodations. Requests should be made early because accommodations can take 4 to 8 weeks to arrange.

Students with disabilities may need to coordinate with other institutions about accommodations. The Coordinator of Disability Services can help inform those institutions.

Approved NUFO 4-24-06

Grading Policy

Grade point averages indicate academic and class standing and are a means of measuring the quality of a student's academic work. Grade point averages are computed on a 4.0 basis. See chart for letter grade point values.

Since grading standards differ from institution to institution, transfer grades are not used in computing grade point averages. Transfer grades are used to compute eligibility for admission to the nursing major.

Nursing faculty adhere to the grading policies of UW-Green Bay, in the awarding of letter grades A, AB, B, BC, C, D, and F.

The range of accumulated points needed to receive specific grades is determined by the course instructor, although the following grading scale is frequently used:

A	=	94-100 Points
AB	=	90-93 Points
B	=	85-89 Points
BC	=	80-84 Points
C	=	75-79 Points
CD	=	71-74 Points
D	=	65-70 Points
F	=	<65 Points

“I” or incomplete grades may be requested from an instructor by a student who due to extenuating and unusual circumstances is unable to complete course work. The instructor has the prerogative to grant an “I” or incomplete grade. If an “I” is granted, the instructor will set a due date for all remaining work (no later than the last day of the next semester). The “I” or incomplete grade will be changed to the earned grade upon completion of the work or at the due date. If a student does not submit work by the due date, the “I” or incomplete grade will convert to an “F” or failure in the course.

Approved NUFO 1/30/2012

Grievance Policy

The Nursing Program follows the UW-Green Bay Policies and Procedures for student formal complaints. These policies can be found [here](#) on the Dean of Students Website.

Academic Grievance

Students who have grievances related to course grades, conduct of classes or other course matters should address those complaints first with the instructor of the course. If the student is not satisfied with the resolution, the grievance can then be taken to the chairperson of the appropriate academic department and, if resolution is not achieved there, the student may then go to the appropriate academic dean.

Pursuant to the United States Department of Education Program Integrity Rule, the University of Wisconsin-Green Bay is required to provide all prospective and current students with the following information. If you are a student residing in a state other than Wisconsin and have a complaint regarding a distance education course/program or regarding the University of Wisconsin-Green Bay, information related to how to resolve a complaint as well as a list of contacts from each state in which a student may file a complaint is available [here](#).

Non-Academic Grievance

Students who have grievances related to University staff should first address those complaints directly with the individual. If the student is not satisfied, the grievance can then be taken to the appropriate supervisor of that department and, if resolution is not achieved there, the student may then go to the Dean of Students Office.

Pursuant to the *United States Department of Education Program Integrity Rule*, the University of Wisconsin-Green Bay is required to provide all prospective and current students with the following information: If you are a student residing in a state other than Wisconsin and have a complaint regarding a distance education course/program or regarding the University of Wisconsin-Green Bay, please [click here](#) for information related to how to resolve a complaint as well as a list of contacts from each state in which a student may file a complaint.

Discrimination and Harassment

Discrimination and harassment have no place on our campus. The intent of harassment is to create a hostile or demeaning environment through inappropriate actions. Harassment can be verbal or physical in nature. Annoyances, threats, demands for favors or constant calling or e-mailing are just some ways individuals can be harassed. If a student feels he or she is being harassed in a general or sexual manner, they should contact the Dean of Students office at (920) 465-2152.

Discrimination on the basis of race, color, sex, religion, national origin, age, disability or sexual orientation is not acceptable behavior at UW-Green Bay. Our campus works hard to foster acceptance and understanding of all those who bring the many different forms of

diversity to our campus. If you observe or are the target of any form of discrimination, contact the Dean of Students office at (920) 465-2152 for assistance in resolving the matter.

Students with Disabilities

Students who have concerns about physical accommodations or violations of the Americans with Disabilities Act should contact the ADA Coordinator at (920) 465-2841. If you need to arrange for academic accommodations, contact Disabilities Services at (920) 465-2841 to discuss what resources are available to assist in your academic success.

Approved NUFO 08/29/11

Program Assessment/Evaluation Policy

The Nursing Program evaluates all aspects of the program according to the Quality Improvement Plan (QIP) for the Nursing Program. Recommended changes are implemented based on the evaluation findings.

Approved NUFO 5/19/14

Progression/Graduation Policy

To graduate, students in the nursing major must receive a grade of C or better in all upper level nursing courses. For clarification, receiving a grade of CD or C-minus necessitates retaking the course and receiving a grade of C or better.

Approved NUFO 3/09/09

RN License Policy *

*This policy does not apply to NURSE 1-2-1 students

Because this is an RN to BSN Program, all students must be Registered Nurses with a current unencumbered U.S. RN license. Students are required to provide a copy of their current RN license at the time of application to the RN to BSN Program. Restrictions, limits or other encumbrances on the license may be grounds for denial to the program or result in further review to determine whether the restrictions will interfere with the student's ability to successfully complete the program.

RN License Status Changes after admission to the Nursing major (Progression): Admitted students are required to notify the program of any license status changes including licensure in another state, license lapses, or license encumbrances (such as a RN license with stipulations or restrictions).

All students remain under an obligation to maintain a current unencumbered license throughout the program. If a student experiences an encumbrance (such as a RN license with stipulations or restrictions) at any time during their program of study, he/she must notify the Chairperson of the Professional Program in Nursing immediately.

Students with an encumbered license:

- must provide the chairperson with a copy of the agreed upon order(s).
- may be allowed to take non-practicum courses.

- are not allowed to take courses that include field experiences (e.g., community health nursing practicum, travel courses).
- will notify the Chairperson of the Professional Program in Nursing when his/her license becomes unencumbered and provide a copy of the Board of Nursing's notification letter.

Failure to notify the Chairperson of the Professional Program in Nursing of an encumbered RN license will be considered academic misconduct and will be subject to the University of Wisconsin policy on academic misconduct.

Practicum Course *

* This policy does not apply to NURSE 1-2-1 students

Since the program requires successful completion of a practicum course, students are required to provide a copy of their current, unencumbered U.S. RN license (in the state in which they complete their practicum) prior to course registration. Any incidents, limitations or encumbrances on the license may prevent successful completion of practicum and subsequently, their ability to graduate.

NUFO approved 3/23/15

Research Policy

Student, faculty, and staff research in nursing is permitted and encouraged. All UW- Green Bay research policies must be followed. Undergraduate nursing students who carry out research usually do so in conjunction with a Senior Honors or Independent Study course.

The UW-Green Bay Institutional Review Board must approve the research prior to data collection. Collaborating agencies or organizations, including those where research subjects will be recruited, must approve the research project prior to data collection.

Researchers using humans as subjects must undergo training concerning the responsible conduct of research. Informed consent to participate in the study must be secured from each participant prior to data collection.

In order to undertake research, students must have approval of: (1) a nursing faculty member for the research project; and (2) the UW-Green Bay Institutional Review Board.

Approved NUFO 2/9/04

Social Media Coursework Related Policy

To be consistent with UW-Green Bay [social media guidelines](#) and the American Nurses Association (ANA) principles for social media, keep content appropriate and confidential matters private. Whatever is posted on a social media site (e.g., Facebook, Twitter, YouTube, LinkedIn, Flickr, etc.) instantly becomes available to the public. Regardless of the privacy settings, content can easily be made available to those outside of the user's preference settings. Be aware that all University and legal guidelines, such as Family Educational Rights and Privacy Act (FERPA) and Health Insurance Portability and Accountability Act of 1996 (HIPAA), also apply in social media sites.

The following is adapted from the American Nurses Association (ANA) Principles for Social Networking:

1. Nurses must not transmit or place online individually identifiable patient information.
2. Nurses must observe ethically prescribed professional patient-nurse boundaries.
3. Nurses should understand that patients, colleagues, institutions, and employers may view postings.
4. Nurses should take advantage of privacy settings and seek to separate personal and professional information online.
5. Nurses should bring content that could harm a patient's privacy, rights, or welfare to the attention of appropriate authorities.

For more information, [click here](#).

Approved NUFO 4/16/12

Stop Out Policy

A student who is not taking a UW-Green Bay course during a semester for any reason is considered 'stopped out.' This occurs when the student is taking a course at another institution but not at UW-Green Bay or not taking courses at all during a semester for personal or professional reasons. Because the Nursing Program recognizes that students often take courses toward their degree at other institutions, the nursing program maintains student files and provides advising during stop out periods of up to two years.

Students who are 'stopped out' have responsibility for: contacting their advisor each semester that they are stopped out, continuing to read e-mail in their UW-Green Bay e-mail accounts, reactivating admission status, and having official transcripts from courses completed outside UW-Green Bay sent directly to the Registrar's Office.

Approved NUFO 3/8/04

Style Manual Policy for Written Papers

The Professional Program in Nursing requires adherence to guidelines published in the latest edition of the Publication Manual of the American Psychological Association for formal writing assignments in upper level nursing courses. Students are required to purchase the manual.

Approved NUFO 5/10/04

Using Special Topics in Nursing Courses as Electives Policy

Two (492) Special Topics in Nursing courses and two electives are required of every nursing student. Given that both the Special Topics in Nursing courses and the electives support nursing practice and career goals, students can substitute additional nursing Special Topics (492) course(s) for one or two of the required electives.

Substitution is only allowed for students who have already completed the required two Special Topics in Nursing courses and desire to enroll in and complete a third or fourth Special Topics in

Nursing course.

Approved NUFO 9/21/15

Waiver and Substitution Procedures

The Professional Program in Nursing follows the University Substitution and Waiver procedures whereby students can seek approval to substitute a course for another course; waive a prerequisite; seek registration for a closed course; or seek approval to not attend a course while otherwise completing the course requirements when there are course time conflicts. To request a waiver/substitution, students should submit in writing the request using the appropriate university form to the instructor, Chair of the Program, and/or the appropriate Dean as directed on the form.

Approved NUFO 9-20-10

Nursing Practicum/Field Experience Policies

Agency Fees

Some practicum agencies charge a fee for placement. If this is the case, faculty will discuss this with the student prior to assignment to the agency. When possible, students will be assigned to an alternative agency however this may delay practicum completion. Students agreeing to pay the agency fee will have the associated charges added to their SIS account that must be paid by the semester tuition due date.

Approved of NUFO 8/25/14

Background Checks

Background checks are required prior to registering for clinical or practicum experiences and should occur no more than one year before the clinical or practicum experience begins. This policy is in accord with accreditation standards and practicum agency requirements. Occasionally practicum agencies require an additional agency specific background check. Students whose assigned agency requires an additional background check are responsible for providing the necessary information and any associated costs.

The UW-Green Bay Professional Program in Nursing utilizes an outside vendor for background checks. Through an online interface with the vendor, students request a background check be performed, pay the necessary fee, and receive access to background check results. The Professional Program in Nursing also has access to the background check results. The Chair of the Professional Program in Nursing will conduct a case-by-case analysis of any situation involving criminal or questionable behavior discovered by the background check. The practicum agency will be notified of background check issues prior to assignment and may decline placement. A copy of the student's background check will be provided to the clinical or practicum agency or agencies upon request.

Students need to pass a criminal background check in order for placement in some practicum agencies. Students who refuse to submit to a background check or whose background check is not favorable may be ineligible to participate in clinical or practicum experiences and may be

unable to complete degree requirements.

Approved of NUFO 8/24/09

Guidelines for Community Health Nursing Practicum

A three-credit community health nursing practicum is required for CHN 455. Faculty arrange practicum experiences in public/community health agencies (e.g., official public health department, correctional facilities, faith-based health centers, school/campus health).

University guidelines require that for every one-credit of practicum or “lab” the student is responsible for three hours of “lab” time/week. For a three-credit practicum, students are required to complete 115.5 clock hours across the practicum semester, which is 126 (55 minute) hours per semester.

Permission is required prior to beginning the practicum experience. Before permission is granted, students must submit evidence of immunizations, titers, licenses, top three choices for public health agency placement sites, and other information. This information must be submitted to the UW-Green Bay nursing coordinator by **March 1** for the fall semester, **October 1** for the spring semester, and **February 1** for the summer semester. Many agencies require affiliation agreements that can take months to secure. Students are expected to carry their own health insurance, and some agencies require that students show proof of professional liability insurance.

Satisfaction of a Portion of Required NUR455 Community Health Nursing Practicum Hours

The American Association of Colleges of Nursing (AACN) requires RN to Baccalaureate programs to include practice experiences that provide an opportunity to integrate new practice-related knowledge and skills for all students (AACN, 2012). Students may satisfy a portion of the 70 required on-site practicum hours if one has worked full time (or the equivalent) as a professional public/community health nurse for a minimum of 2 years (within five years of enrolling in the Community Health Nursing Practicum course). Experience completed through the associate degree nursing program does not qualify. Students are required to submit a narrative and supporting documentation.

Faculty will determine number of hours earned, if any, based on the narrative and supporting documents. Students meeting these requirements can contact an advisor for further information. Faculty will determine number of hours, if any, earned.

Approved of NUFO 11/19/12

Student Health Policy

Student health requirements are implemented when students are enrolled in practicum courses that might involve client contact such as the Community Health Nursing Practicum. The Student Health Policy procedure consists of the following four components: 1) Required RN License/CPR/Immunizations, 2) Where to Get Immunizations and Titers, 3) Clinical Agency Requirements, and 4) Additional Health-Related Responsibilities.

Required Practicum Documentation:

A. RN License Policy

As noted under RN license policy, students are required to provide a copy of their current, unencumbered U.S. RN license (in the state in which they complete their practicum) prior to registration. Any incidents, limitations or encumbrances on the license may prevent successful completion of practicum and subsequently, their ability to graduate.

B. CPR Certification

A copy of a current CPR certification card must be submitted. It must be either American Red Cross or American Heart Association Basic Life Support (BLS) for Healthcare Providers classroom course. **Copy must be front and back of the card & card must be signed.** **NOTE:** *Online only courses without a classroom skills component or the “Heartsaver” course are NOT acceptable.*

C. Immunizations

Prior to beginning practicum experience, students are required to submit documentation of immunizations or immunity. If an immunization is contraindicated for medical reasons, students are required to file documentation of medical contraindication, and faculty will contact the practicum agency to request a waiver of the required immunization. A student’s failure to have all required immunizations may influence the Professional Program in Nursing’s ability to place the student in practicum sites, and limit the student’s ability to meet requirements for practicum completion.

The following immunizations and documentation of CPR and RN license are required:

Requirement	Description
Measles, Mumps, Rubella (MMR)	<p>*Dates (month/day/year) of <u>two immunizations</u> of MMR vaccine OR</p> <p>Laboratory evidence showing the month/day/year and positive/immune titer results for measles (rubeola), mumps, and German Measles (rubella).</p> <p>OR</p> <p>Women who are sure they are not having more children need to have laboratory evidence of the month/date/year and positive/immune titer results or the date (month/day/year) of <u>one immunization</u> of <u>MMR vaccine</u>.</p>
Hepatitis B	<p>** Dates (month/day/year) for <u>three immunizations</u> of Hepatitis B vaccine</p> <p>OR</p> <p>Laboratory evidence showing the month/day/year and a positive/immune titer results for Hepatitis B</p>

Tetanus	Date (month/day/year) for <u>one immunization</u> of Tetanus within the past 10 years
Tdap <i>Recommended not required</i>	Tetanus and diphtheria vaccine (Tdap) is recommended for health care workers who have not previously received Tdap and who had their last tetanus at least 2 years but less than 10 years earlier.
Varicella Zoster	<p>***Date (month/day/year) for <u>two immunizations</u> of Varicella</p> <p style="text-align: center;">OR</p> <p>Laboratory evidence showing the month/day/year of positive/immune titer results for varicella</p>
Tuberculosis (TB)	<p>If negative, submit documentation of one of the following:</p> <ul style="list-style-type: none"> • Baseline TB screening using a two-step TB skin test (1-3 weeks apart) OR • Single blood assay test IGRA (QuantiFERON Gold or T-Spot) OR • Annual single TB skin test or blood assay test thereafter <p>If positive, submit all of the following:</p> <ul style="list-style-type: none"> • Positive initial result • Negative/clear chest x-ray dated post positive TB skin test conversion • Complete annual health symptom TB specific questionnaire <p>If a student is positive for active TB disease, he/she must participate in an active treatment plan to be reviewed annually. Student is not eligible to participate in clinical practicum until such time as medical provider determines he/she is not communicable.</p>
Influenza	Date (month/date/year) of last Influenza immunization (before 11/15 of academic year). <i>Students completing practicum during the summer session are exempt from</i>

*The first dose of MMR must be given after 12 months of age. The second dose of MMR needs to be at least 28 days after the first dose.**Hepatitis B – Three dose series; The second dose should be at least one month after the first dose; The third dose should be at least 4months after the first dose. ***Varicella second dose to be given at least 4 weeks after the first; Herpes zoster vaccination is recommended second for all over age 60, regardless of previous history, unless contraindicated.

Approved at NUFO 12/14/15

Exemptions: Students may request exemptions from immunization requirements (i.e. for medical reasons or because of vaccine shortage) in writing from the practicum coordinator. Even with an exemption, practicum sites may or may not allow a student to be placed there without certain immunizations.

Where to Get Immunizations and Check Titers

Immunizations and titer checks are available through primary care offices (physicians and nurse practitioners), clinics, and some public health departments. Some health insurance plans do not cover adult immunizations, so it is recommended that students check with their plans before making appointments. Campus track students can receive immunization and have titers checked through the UW-Green Bay Counseling and Health Services for a charge. Students receiving immunizations at UW-Green Bay Counseling and Health Services are required to complete a health history form that is available in Student Services, Room 1400.

Clinical Agency Requirements

Some agencies have other health requirements in addition to those of the Nursing Program. Students are advised of these requirements by the practicum coordinator or faculty so that they can be completed before the practicum experience begins. Such requirements may include physical examination, drug screening, health insurance, finger printing, an agency specific background check, agency fee, etc. The cost of such requirements is the responsibility of the individual student.

Additional Health Related Responsibilities

1. **Universal Precautions:** During practicum, students receive instructions on universal (blood borne pathogens) precautions in accordance with Occupational Safety and Health Administration (OSHA) guidelines for self- exposure to blood borne pathogens. Students are expected to adhere to the protocol for blood borne pathogens post-exposure follow-up.
2. **Health Insurance:** Students are responsible for any costs associated with immunization and titers as well as treatment and follow-up of injuries incurred during the clinical practicum. Personal health insurance coverage is highly recommended. Some agencies require students to provide proof of health insurance.
3. **Injuries:** Students should immediately report any practicum-related injury or incident, involving the student or clients, to the course instructor and to the agency director.

References:

Centers for Disease Control and Prevention. (2001, June 29). Updated US Public Health

- Service guidelines for the management of occupational exposures to HBV, HCV, and HIV and recommendations for post-exposure prophylaxis. *Morbidity and Mortality Weekly Report (MMWR)*, 50 (RR11), 1-42. Retrieved from www.cdc.gov/mmwr/preview/mmwrhtml/rr5011a1.htm
- Centers for Disease Control and Prevention, National Center for HIV/AIDS, Viral Hepatitis, STD and TB Prevention, Division of Tuberculosis Elimination. (2013). *Core curriculum on tuberculosis* (6th ed.). Retrieved from www.cdc.gov/tb/education/corecurr/default.htm
- Centers for Disease Control and Prevention. (2014). Recommended Vaccines for Healthcare Workers. Retrieved from www.cdc.gov/vaccines/adults/rec-vac/hcw.html
- Chin, J. (ed.) (2004). *Control of communicable disease manual* (117th ed.). Washington, DC: American Public Health Association.
- U.S. Department of Commerce (2000, March). *Occupational health and safety manual*. Retrieved from <http://ohrm.doc.gov/safetyprogram/Safety%20manual.pdf>

Approved NUFO 5/22/06 (references updated 07/11/14)

Students Performing Nursing Interventions Policy

Students participating in practicum or field experiences must comply with the following:

Students participating in nursing intervention(s) must be licensed in the state where the intervention occurs*, adhere to the nurse practice act of the state where the intervention occurs, follow all applicable agency policies, and have requisite knowledge and skills.

*Students with current, unencumbered multi-state licensure will be allowed to participate in practicum or field experiences in another compact state. For information on multistate licensure, go to <https://www.ncsbn.org/compacts.htm>. Frequently asked questions can be found [here](#).

Approved NUFO 08/25/08

Nursing Program Student Guidelines and Opportunities

Student Participation in Nursing Unit Governance

Nursing students are encouraged to participate on Nursing Unit committees to enhance curriculum development, develop student policies and provide input on program evaluation. Student input will be solicited at least once a year.

Approved of by NUFO 11/10/08.

The Professional Program in Nursing is organized into the following committee structure:

- ❑ **Curriculum Development Committee (CDC)**. This committee is responsible for evaluating the nursing program curriculum, and for library and media resources. Nursing students participate in this committee through

participation in face to face and online discussions.

- ❑ **Student Graduate Development Committee (SGDC).** This committee has responsibility for drafting and implementing policies on admission to the nursing major, advising, progression and retention, student health policy and other student related policies. Nursing students participate in this committee through participation in face to face and online discussions
- ❑ **Assessment and Evaluation Committee.** This committee has responsibility for drafting and monitoring implementation of program evaluation plans and policies. Nursing students participate in this committee through participation in face to face and online discussions
- ❑ **Nursing Unit Faculty Organization (NUFO).** This committee is responsible for drafting and revising the nursing program mission, philosophy, and organizational structure. This is the decision making body of the nursing unit as well. NUFO is responsible for approval of motions originating in other committees, for the drafting and revision of NUFO By-Laws, personnel and budget issues. Nursing students *do not* serve on this committee.

For more information about participation on Nursing Program Committees, contact the Nursing Program Assistant at 920- 465-2826 or nursing@uwgb.edu.

Students' Rights and Responsibilities

Student Rights	Student Responsibilities
To receive accurate information about the Nursing Program, policies, requirements.	To familiarize him or herself with information provided and make informed choices.
To timely and accurate advising about general education, support courses, nursing curriculum and courses.	To periodically seek the consultation of a nursing program advisor and make informed decisions based on the advice given. Ultimately the student maintains
To be provided with information about the periodicity of course offerings and to enroll in courses to provide reasonable opportunity to complete the nursing major in a timely manner.	To take advantage of course enrollment opportunities.
To be informed about University rules governing academic dishonesty.	To comply with those rules.
To receive a course syllabus at the beginning of each course that states course description, objectives, learning activities and evaluation methods.	To use syllabus to prepare for each class (3 hours/credit /week outside study time/work is the standard expectation).

To reasonable accommodation of religious beliefs.	To inform course instructor of religious accommodation needs in a timely manner.
To receive timely, fair and constructive feedback on classroom performance.	To respond to the instructor feedback to maintain or improve performance.
To be able to access course instructor outside of class time via regular office hours and/or appointments.	To make and keep scheduled appointments with instructor during office hours.
To help make and review policies concerning the University and Nursing Program.	To participate on student government and on appointed All-University Committees. To attend and provide in-put on Nursing Unit
To be able to communicate concerns/complaints about courses, instructors and program of study to persons who will listen, who are non-judgmental, respect confidentially and will assist in the appropriate resolution of the problem.	To respect the chain of command in voicing concerns/complaints. First to the individual instructor involved, then to the Nursing Program Chairperson, then to the Dean of Health, Education and Social Welfare for course related or to the Dean of Students for non-course-related issues.
To be treated in an ethical and professional manner by the nursing faculty or staff in the classroom and in advising.	To report any perceived unethical or non-professional behavior of the nursing faculty or staff through the appropriate chain of command. In addition students will treat faculty and staff with respect and in consideration of

Academic Integrity

Principles

The university has a responsibility to promote academic honesty and integrity. Students are responsible for:

- Honest completion and representation of their work
- Appropriate citation of sources
- Respect of others' academic endeavors

Students who violate these standards will be confronted and must accept the consequences.

Nursing students may be required to pledge academic honesty in courses. A sample pledge follows:

I guarantee that this is my independent work. I will not consult with anyone or discuss the contents of this exam with anyone. I agree not to show the exam questions to anyone, including other students. To do otherwise would constitute Academic Dishonesty.

Academic Misconduct occurs when the student:

- Seeks to claim credit for the work or efforts of another without

authorization or citation

- Uses unauthorized materials or fabricated data in any academic exercise
- Forges or falsifies academic documents or records
- Intentionally impedes or damages the academic work of others
- Engages in conduct aimed at making false representation of a student's performance
- Assists other students in any of the above

Examples of Academic Misconduct:

- Cheating on an examination
- Collaborating with others in work to be presented, contrary to the stated rules of the course
- Submitting a paper or assignment as one's own work when a part or all of the paper or assignment is the work of another
- Submitting a paper or assignment containing someone else's words or ideas (including phrases or ideas from Internet sources) without quoting/citing the source
- Cheating on an examination
- Collaborating with others in work to be presented, contrary to the stated rules of the course

Sanctions Imposed for Academic Misconduct:

- Oral reprimand
- Written reprimand presented only to the student
- Assignment to repeat the work
- A lower or failing grade on the assignment or test
- A lower or failing grade in the course
- Removal of the student from the course
- Written reprimand included in the student's disciplinary file
- Disciplinary probation
- Suspension or university expulsion

For more information on Academic Integrity contact the Dean of Students Office at:

www.uwgb.edu/deanofstudents/policies_procedures

Independent Study

Students may arrange to take an independent study on a topic intended to expand the nursing curriculum but cannot duplicate a regular UW-Green Bay course. Under the advisement of a regular member of the nursing faculty, independent studies can be taken for 1 – 4 credits. For further information, see the undergraduate catalog at

<http://catalog.uwgb.edu/undergraduate/general-information/academic-rules-regulations>

Honors in the Major

Students with senior standing and with a GPA of 3.75 for all upper level nurses courses may complete an **Honors in the Major** project under the advisement of a regular member of the nursing faculty. Honors in the major are different than all-university honors and recognize students at graduation with excellence in the major. For further information, see the undergraduate catalog at <http://catalog.uwgb.edu/undergraduate/general-information/academic-rules-regulations>

All University (Latin) Honors

Students receiving **All University (Latin) Honors** are recognized with honor cords at the commencement ceremony. To receive an all-university honor of cum laude, summa cum laude, or magna cum laude, the student must complete specified GPA requirements and must complete **48 regularly graded credits taken in residence at UW-Green Bay**. This policy is strictly enforced by the University. Many nursing students are not eligible for these honors because of the number of credits transferred from other institutions. For further information, see the undergraduate catalog at <http://catalog.uwgb.edu/undergraduate/general-information/academic-rules-regulations>

Approved NUFO 9/20/10

Sigma Theta Tau International/Kappa Pi Chapter at-Large

Sigma Theta Tau International Honor Society of Nursing is committed to fostering excellence, scholarship, and leadership in nursing to improve health care worldwide. The society promotes the use of nursing research in health care delivery and makes its resources available to all people and institutions interested in the latest knowledge in nursing care. There are more than 406 chapters located on 503 college and university campuses in the U.S. and in countries including Canada, Hong Kong, Pakistan, South Korea, Australia and Taiwan. With 120,000 active members, it is the second largest nursing organization in the world.

Kappa Pi Chapter at-Large is our local chapter of Sigma Theta Tau International and is co-sponsored by the University of Wisconsin Green Bay Professional Nursing Program and Bellin College. The Honor Society was first established at UW-Green Bay in 1985 and was chartered Kappa Pi Chapter in 1988. In 1996, Kappa Pi Chapter was expanded to Kappa Pi Chapter at-Large (this means that there are two institutions sponsoring the chapter, UW- Green Bay and Bellin College). Thus, members are drawn from both institutions and also from the category of community nurse leader.

Membership into the Honor Society is by invitation to baccalaureate and graduate nursing students who demonstrate excellence in scholarship, and community nurse leaders who exhibit exceptional achievements in nursing. Undergraduate nursing students at UW- Green Bay who are currently enrolled in the Synthesis for Nursing Practice course and have at least a 3.0 GPA (based on a 4.0 scale), rank in the upper 35% (GPA) of their graduating class (the graduating class is considered the Synthesis course), and meet the expectations of academic integrity, qualify for membership. If you meet these qualifications, the Eligibility Committee of Kappa Pi Chapter at-Large will invite your application. If you accept the invitation to membership, you will be officially inducted into the chapter at a formal induction ceremony traditionally held during the late spring at UW-Green Bay.

Membership into the society is indeed an honor and remains with you throughout life, whether you are an active or inactive member. To be an active member, you must pay dues every year. If you reside closer to a different Sigma Theta Tau Chapter, you can easily transfer Kappa-Pi Chapter at-Large membership to another chapter, or you become a dual member of both chapters.

If you are interested in more information about Kappa Pi Chapter at-Large or would like to check if you qualify for membership please contact the Program Assistant of the UW-Green Bay Nursing Program (920-465-2826 or nursing@uwgb.edu), who will put you in touch with the Eligibility Chairperson. For comprehensive information about Sigma Theta Tau, its mission and vision, heritage, society demographics, chapters, events, membership, research, library, programs, publications, etc., [click here](#).

Phi Kappa Phi

The honor Society of Phi Kappa Phi is the oldest and most selective academic honor society dedicated to the recognition and promotion of academic excellence in all fields of higher education. More than one million members have been inducted since its founding in 1897. The UW-Green Bay Chapter of Phi Kappa Phi normally inducts new members once a year, usually in the late fall or early winter. Membership is granted by invitation only. Potential new student members are seniors who have completed at least two full-time semesters at UW-Green Bay (24 credits) and who are ranked in the top 10% of their academic major according to their cumulative Grade Point Average based on all college work. Students invited to join must have a cumulative G.P.A. of at least 3.5. In practice, for most majors the top 10% of students usually have a G.P.A. of 3.7 or higher. Before invitations are sent, the faculty in each major reviews their list of potential Phi Kappa Phi students and makes recommendations. The recommendations are then reviewed and approved by the faculty, staff and community members of the local chapter, and invitations are sent to the students.